



**CZ**

For those  
who know

*Product catalogue*

**2020**

**OUR PRODUCTS ARE  
DISTRIBUTED TO MORE THAN  
100 COUNTRIES  
ALL OVER THE WORLD**



## **CONTENTS**

PISTOLS **6**



RIMFIRE RIFLES **36**



CENTERFIRE RIFLES **50**



SEMIAUTOMATIC **76**



ACCESSORIES **82**

The manufacturer reserves the right to make any changes it deems necessary to improve its models or to meet any requirements of manufacturing or commercial nature.



Dear customers, business partners  
and fans of the CZ brand,

After a year, I once again greet you all from the heart of Europe, the place where some of the best small arms in the world have been produced since 1936.

It is no coincidence that CZ products rank among the absolute top in the world. Our company always puts the customer, his needs and requirements first. We know that buying a firearm is a highly responsible choice and expression of enormous trust. Knowing that thousands of CZ firearms are sold every day around the world permanently encourages all workers of Česká zbrojovka to give their best performance and improve continuously.

CZ firearms are born using state-of-the-art research and development procedures, they are manufactured in perfectly equipped production plants and undergo extremely demanding all-round testing before reaching shop counters. But all this can be said about some other major arms factories. What is the secret to the extraordinary quality and inventiveness of the CZ brand?

Our biggest asset is our personnel. These people literally live for guns and shooting and connect their passion to their daily work. They are basically the same enthusiasts as our customers, who get exactly what they want and need from every CZ firearm. And not only that! With its unique know-how, Česká zbrojovka keeps trying to explore new design and technological paths and anticipates and sets trends in all branches of shooting and arms production.

That is why CZ firearms have great reputation all over the world and why their fans are so excited about every novelty.

Thank you for your continued favour. I wish you good luck when choosing your new CZ firearm. I am honoured to welcome you to the club of enthusiastic customers of our brand.

A handwritten signature in black ink, appearing to read 'Ladislav Britaňák', written on a light-colored background.

Best regards,  
Ladislav Britaňák  
CEO and Chairman of the Board  
Česká zbrojovka a.s.

# PISTOLS

Semi-automatic pistols for defence, service, sport and hobby shooting represent one of the linchpins of global success for Česká zbrojovka a.s. and worldwide popularity of the CZ brand. We have been developing and manufacturing semi-automatic pistols for more than 60 years and there are no secrets left in this challenging field for us. Behind the success of these models is a team of product managers with extensive experience in the armed forces, and the best sport shooters on the planet. We have the most advanced research and development facilities available and use the latest cutting-edge production technologies. At the same time, we pay close attention to the needs and requirements of all our groups of customers.

# CZ P-10 SERIES



**The CZ P-10 series represents a new level of large-capacity defence, service and sport striker fired pistols with a polymer frame**

This comprehensive series of cutting-edge pistols includes a subcompact (CZ P-10 S), compact (CZ P-10 C), semicompact (CZ P-10 SC) as well as a full-size model (CZ P-10 F). In addition, there are OR variants with the slide modified for a fast and strong attachment of a red dot sight.



LONG LIFE



DURABILITY



Extremely durable surface finish on slide and barrel



Easy sight alignment of iron sights with three luminescent dots



Easily interchangeable backstraps in three sizes



Automatic striker block ensuring drop safety



Two pairs of cocking grooves for comfortable handling



Magazine release can be fitted either side



All CZ P-10 pistols, whose design is based on several original patented elements, excel in maximum reliability, high accuracy, extreme longevity and refined shooting. The superb user friendliness is further enhanced by the unique checkering and grip accomplished by using the new ergonomics technique DiFEND.

The very first model, the CZ P-10 C compact, was awarded the title Pistol of the Year 2017 by the Guns & Ammo magazine.



P-10



Flat ambidextrous slide stop (P-10 S, P-10 C, P-10 SC, P-10 F)



Frame made of mechanically stable and thermostable fibre reinforced polymer



Superb shooting comfort thanks to the unique ergonomic grip with prominent checkering

MICRO

## CZ P-10 M

9×19 | 7

Despite its radical miniaturization, the P-10 M retains the stand-out features that have set the P-10 line apart from other striker-fired pistols, most notably the outstanding ergonomics and a superb trigger. With a reduced footprint and width, it has been optimized for comfortable concealed carry while maintaining a 7+1 capacity in 9×19 mm. An internal slide stop and user-friendly trigger make the P-10 M an ideal back-up or defensive firearm for everyday carry.



NEW

SUBCOMPACT

## CZ P-10 S

9×19 | 12 (14)

The CZ P-10 S is another variant of the successful series of pistols with a linear striker. Its subcompact dimensions are ideal for concealed carry, making it a perfect model for personal defence or a back-up gun for armed forces personnel. Despite the smaller size, this pistol offers the same shooting comfort and user-friendliness as its full size version. The basic version of this pistol features a 12-round 9×19 cal. magazine, a superior capacity for its category.



NEW

COMPACT

## CZ P-10 C

9×19 | 15 (17) 9×21 | 15 (17) .380 AUTO | 15 (17)

Thanks to its dimensions, innovative design and large firing capacity, this highly advanced and compact striker fired pistol is suitable for armed forces as well as concealed carry for personal defence. There is a new feature in the form of a reversible magazine release.



COMPACT

## CZ P-10 C OR

9×19 | 15

A model with the slide modified for the easy attachment of a collimator sight. The company's original solution is characterized by robustness, strength and durability of assembly, low mounting height, easy sighting of a collimator sight even at long distances, and the option to use extended iron sights in the event of the optics failing.



SEMI-COMPACT

## CZ P-10 SC

9×19 | 15 (17)

A perfect model for users who would like to carry their pistol as covertly as possible and as comfortably as possible, but who also want to maximise the potential of the 9×19 cartridge as well as the advantages of a long barrel and slide. This semicompact duly combines the standard size barrel and slide with a compact polymer frame.



NEW

FULL-SIZE

## CZ P-10 F

9×19 | 19 9×21 | 19

There are situations when a pistol user appreciates a good grip, a large magazine capacity or a long sight line. These are the main benefits of this new member of the exceptionally successful CZ P-10 family: a standard size striker fired model.



NEW

P-10

TECHNICAL DATA

MODEL	HEIGHT/WIDTH/LENGHT	BARREL LENGTH	WEIGHT	CALIBER	MAGAZINE CAPACITY	SIGHTS	TRIGGER	FRAME	SAFETY FEATURES
CZ P-10 M	112×25,5×160,5 mm	85 mm	0,57 kg	9×19	7	Luminescent	SFDA	Highly durable polymer	Trigger safety; drop safety
CZ P-10 S	116×32×170 mm	90 mm	0,71 kg	9×19	12 (14)	Luminescent, Tritium	SFDA	Highly durable polymer	Striker block; Drop safety, Trigger bar safety
CZ P-10 C	132×32×187 mm	102 mm	0,74 kg	9×19, 9×21, .380 AUTO	15 (17)	Luminescent, Tritium	SFDA	Highly durable polymer	Trigger safety; drop safety, Trigger bar safety, Firing pin block (drop safety)
CZ P-10 C OR	132×32×187 mm	102 mm	0,74 kg	9×19	15	Luminescent, Tritium	SFDA	Highly durable polymer	Trigger safety; Drop safety, Trigger bar safety, Firing pin block (drop safety)
CZ P-10 SC	132×32×203 mm	114 mm	0,78 kg	9×19	15 (17)	Luminescent, Tritium	SFDA	Highly durable polymer	Trigger bar safety, Firing pin block (drop safety)
CZ P-10 F	150×32×203 mm	114 mm	0,80 kg	9×19, 9×21	19	Luminescent, Tritium	SFDA	Highly durable polymer	Trigger safety; Drop safety, Trigger bar safety, Firing pin block (drop safety)



# CZ P-07/09 SERIES



LONG LIFE



DURABILITY



They significantly surpass rival models particularly due to the exceptionally smooth trigger travel and low trigger pull weight in both single and double action modes. In combination with the superb ergonomics and high-quality cold hammer forged barrels, they achieve excellent accuracy. A unique bonus is the option for the user to easily convert the safety configuration to decocking and vice versa, while the controls remain ambidextrous.

The CZ P-07 and CZ P-09 pistols have a durable polymer frame extremely resistant to mechanical damage and changes in temperature, with a standardized mounting rail and larger trigger guard for shooting while wearing gloves. The size of the pistol grip can be easily adjusted with three interchangeable backstraps, in line with the needs and preferences of each user. The surface finish on the metal parts has superior resistance against abrasion, mechanical damage and corrosion. Other strong points of this model series include complete safety of user, absolute reliability in all weather conditions, very easy sight alignment of the iron sights and high capacity of the magazine for all calibres, which can be further increased with a baseplate.



## Best in the world in the SA/DA polymer pistol category

The superior parameters of the OMEGA trigger mechanism, which in its radically simplified concept uses the unbeatable principle of the timeless CZ 75 model, have paved the way for the creation of a completely new generation of large-capacity SA/DA pistols with an external hammer and polymer frame for defence, service and sport.



- INTERCHANGEABLE BACKSTRAPS**
- TWO PAIRS OF COCKING GROOVES**
- SLIDE SLANTED AT THE FRONT FOR EASY HOLSTERING**
- STANDARDIZED RAIL FOR THE ATTACHMENT OF ACCESSORIES**
- TRIGGER ADAPTED FOR EASY REACH IN DA MODE**

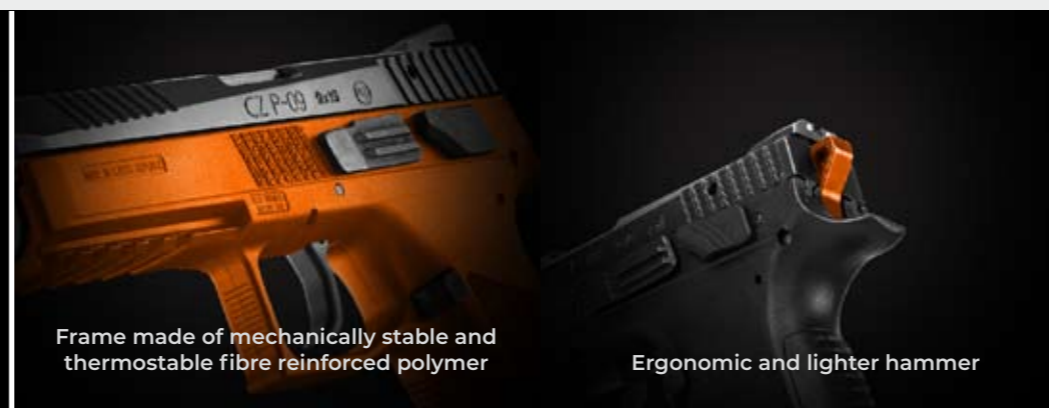
P-07/09



OMEGA trigger mechanism with excellent trigger travel



Easy user conversion from a safety configuration to decocking and vice versa



Frame made of mechanically stable and thermostable fibre reinforced polymer



Ergonomic and lighter hammer



Ambidextrous manual safety/decocking controls

Rounded edges for faster drawing



COMPACT

CZ P-07

9×19 | 15 (17) .380 AUTO | 15

A compact SA/DA pistol with an external hammer and a highly durable polymer frame. This extremely popular model is remarkably accurate and reliable in all climatic conditions. It is chiefly intended for the armed forces and for concealed carry.



FULL-SIZE

CZ P-09

9×19 | 19

Large-capacity traditional SA/DA concept service pistols with an external hammer and a modern frame made of high-strength polymer. The advantages of this model include high accuracy and perfect reliability even in the most adverse climatic conditions.



FULL-SIZE

CZ P-09 FDE

9×19 | 19

In keeping with modern trends, the standard CZ P-09 model has also received a new variant, this time with tritium sights and the frame in a popular Flat Dark Earth colour. Regardless of the colour, the grips have interchangeable backstraps that enable the user to effortlessly change the ergonomics according to their own preferences.



P-07/09

TECHNICAL DATA

MODEL	HEIGHT/WIDTH/LENGHT	BARREL LENGTH	WEIGHT	CALIBER	MAGAZINE CAPACITY	SIGHTS	TRIGGER	FRAME
CZ P-09	148×37×208 mm	115 mm	0,89 kg	9×19	19	Luminescent	SA/DA	Highly durable polymer
CZ P-09 FDE	148×37×208 mm	115 mm	0,89 kg	9×19	19	Tritium	SA/DA	Highly durable polymer
CZ P-07	137×37×185 mm	95 mm	0,80 kg	9×19, .380 AUTO	15 (17), 15	Luminescent	SA/DA	Highly durable polymer

SAFETY FEATURES

- Firing pin block, Decocking/manual safety, Safety notch
- Firing pin block, Decocking/manual safety, Safety notch
- Firing pin block, Decocking/manual safety, Safety notch

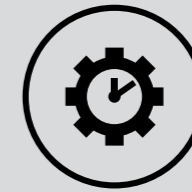


# CZ SHADOW 2 SERIES

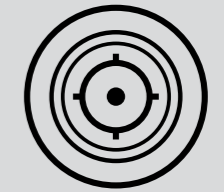
**The new queen of the IPSC Production Division and the most accurate and fastest pistol of its category in the world**

The CZ SHADOW 2 family represents a new level of first-rate large-capacity all-steel pistols for modern dynamic sport shooting disciplines. These models enable good shooters to give excellent performance and the best to triumph at the most prestigious IPSC competitions. Moreover, they also make good weapons for personal defence.

SHADOW 2



LONG LIFE



HIGH ACCURACY



Prominent checkering on the grip for the most reliable grip



Enlarged left safety catch



Adjustable magazine release catch



Easy sight alignment using the adjustable rear sight



Optic fibre front sight

Ergonomic pistol grip for deep-seated grip



With their design, these elegant and absolutely reliable pistols follow in the footsteps of the CZ 75 SP-01 SHADOW which ruled the IPSC Production Division for a decade and which the CZ SHADOW 2 series has surpassed in all the key parameters.

The challenging mission of creating such outstanding models has been accomplished thanks to close collaboration with the elite CZ Shooting team members and the use of latest advanced

manufacturing processes and technologies. The slide and frame of the CZ SHADOW 2 pistols have been radically modernized which, together with the extended barrel, enables faster and more accurate shooting. The trigger mechanism has been finely tuned to achieve smoother trigger travel and shortened reset. The shape of the frame and pistol grip has been designed to enable as comfortable and secure a grip as possible, while the prominent checkering provides an absolutely reliable contact of the shooting hand with the pistol in all circumstances.

The exclusive quality and exceptional accuracy of the CZ SHADOW 2 series is further enhanced by precision manufacturing on robotic machining centres without any manual involvement. The surface finish of these pistols inspired by the service models guarantees extreme resistance to corrosion, adverse weather and mechanical damage.



Unique flat aluminium grip panels



Smooth trigger movement and shortened reset



120 mm long cold hammer forged barrel



FULL-SIZE

## CZ SHADOW 2

9×19 | 19/10 9×21 | 19/10

A new level of a first-rate all-steel pistol for modern dynamic shooting events. A model which enables good shooters to give excellent performance and the best ones to triumph at the most prestigious IPSC competitions.



FULL-SIZE

## CZ SHADOW 2 SA

9×19 | 19

A specialized competition pistol intended especially for fans of target shooting with large-caliber pistols.



FULL-SIZE

## CZ SHADOW 2 OR

9×19 | 19/10 9×21 | 19/10

The CZ SHADOW 2 pistol is extremely fast, yet at some shooting stages, it can be even faster. How is that possible? By using modern compact collimator sights. The Optics Ready variant allows for their easy, exceptionally low and at the same time firm attachment.



FULL-SIZE

## CZ SHADOW 2

URBAN GREY

9×19 | 19/10 9×21 | 19

Traditional black is not the only colour that suits sport and tactical shooting. Our portfolio therefore includes a model whose frame is coated with a highly durable surface finish in a trendy and popular Urban Grey colour which beautifully contrasts with the black aluminium grip panels.



FULL-SIZE

## CZ SHADOW 2

ORANGE

9×19 | 19/10 9×21 | 19/10

A perfect gun that ranks your shooting experience and results at an absolute top. The superb design base of this model has been improved by precisely targeted gunsmithing modifications and the use of top-quality sport parts.



SHADOW 2

CZ SHADOW 2 9x19  
MADE IN CZECH REPUBLIC

### TECHNICAL DATA

MODEL	HEIGHT/WIDTH/LENGTH	BARREL LENGTH	WEIGHT	CALIBER	MAGAZINE CAPACITY	SIGHTS	TRIGGER	FRAME	GRIPS	SAFETY FEATURES
CZ SHADOW 2	157×34×217 mm	120 mm	1,33 kg	9×19, 9×21	19/10	Fibre optic front sight Height adjustable visor	SA/DA	Steel	Aluminium	Safety notch, Manual safety
CZ SHADOW 2 SA	157×34×217 mm	120/125 mm	1,33 kg	9×19	19	Fibre optic front sight Height adjustable visor	SA	Steel	Aluminium	Safety notch, Manual safety
CZ SHADOW 2 OR	157×34×217 mm	120 mm	1,33 kg	9×19, 9×21	19/10	Fibre optic front sight Height adjustable visor	SA/DA	Steel	Aluminium	Safety notch, Manual safety
CZ SHADOW 2 URBAN GREY	157×34×217 mm	120 mm	1,33 kg	9×19, 9×21	19/10; 19	Fibre optic front sight Height adjustable visor	SA/DA	Steel	Aluminium	Safety notch, Manual safety
CZ SHADOW 2 ORANGE	157×34×217 mm	120 mm	1,33 kg	9×19, 9×21	19/10	Fibre optic front sight Height adjustable visor	SA/DA	Steel	Aluminium	Safety notch, Manual safety

# CZ SHADOW 1 SERIES

SHADOW 1



## Unique all-steel large capacity SA/DA pistols for self-defence, service and IPSC shooting

The CZ 75 SP-01 models currently constitute truly universal handguns around. And not by coincidence – these pistols have been developed in collaboration with members of elite special forces and the best sport shooters on the planet. Regarding design, they are based on the timeless concept of the CZ 75 whose key parameters have been brought to absolute perfection. While retaining all the user-friendly features, a considerable improvement in accuracy and a major increase of lifetime have been achieved.

FULL-SIZE

## CZ 75 SP-01

SHADOW

9×19 | 19 9×21 | 10

A modern-day legend. The IPSC Production Division world champions have been involved in the development of this all-steel SA/DA large-calibre pistol with an external hammer. Thanks to its exceptional properties, this model has also become the handgun of choice in several foreign armed forces.



FULL-SIZE

## CZ 75 SP-01

SHADOW ORANGE

9×19 | 19 9×21 | 19

Even though the CZ 75 SP-01 SHADOW ORANGE is a fully mass-produced gun, this process is complemented by procedures that increase the utility properties of the firearm (for example by manual alignment of the barrel and lateral delimitation of slide clearances or tuned trigger mechanism). The gun has a polished barrel and thin and long aluminium grips in orange colour.



Low bore axis



Superb ergonomics of the pistol grip



MIL-STD-1913 mounting rail



Extended magazine release, easy to fit either side



Magazine mouth designed for fast reloading



Ergonomic rubber grip panels

### TECHNICAL DATA

MODEL	HEIGHT/WIDTH/LENGTH	BARREL LENGTH	WEIGHT	CALIBER	MAGAZINE CAPACITY	SIGHTS	TRIGGER	FRAME	GRIPS	SAFETY FEATURES
CZ 75 SP-01 SHADOW	150×42×209 mm	114/120 mm	1,18 kg	9×19, 9×21	19, 10	Fibre optic front sight Fixed rear sight	SA/DA	Steel	Rubber	Safety notch, Manual safety
CZ 75 SP-01 SHADOW ORANGE	147×37×207 mm	114/120 mm	1,18 kg	9×19, 9×21	19	Fixed visor, Safety notch	SA/DA	Steel	Aluminium	Safety notch, Manual safety

# CZ 75 TS SERIES



## Weapons of masters and the best pistols in the world for the Standard and Open divisions of IPSC

Although the primary focus of Česká zbrojovka a.s. is on factory production, the company also makes special models for its phenomenal Shooting Team. These pistols are specially modified to be as accurate and reliable as possible.

The CZ 75 TACTICAL SPORTS (TS) model series has been created with the aim of offering this championship quality to a wider circle of customers. These pistols are chiefly intended for the Standard and Open divisions of IPSC, they are made in small volumes and are finely tuned in the factory to offer top results straight from the box.

FULL-SIZE

## CZ 75 TS ORANGE

9×19 | 20 .40 S&W | 17

A top of the range sport special for the Standard Division in IPSC. The hand fitted barrel has a significantly longer lifetime, there is distinctive checkering on the pistol grip which, together with an undercut trigger guard and deep beavertail, improves the overall ergonomics and control. New features include a modified safety set (a wide left safety and a flat right one), enlarged aluminium magazine release and an aluminium trigger.



FULL-SIZE

## CZ 75 TS CZECHMATE

9×19 | 20 9 MM MAJOR | 20

A sport special inspired by individually finetuned guns of the elite shooters in the IPSC Open Division. All the parts are masterfully fitted together, run in and tested. Each pistol is supplied with an extensive set of accessories, including a C-more side mount for a collimator sight. Thus, each pistol is ready to perform at its best upon delivery.



Two pairs of cocking grooves for quick and reliable drawing

Extended magazine release, easy to fit either side

Long frame guarantees perfect slide block moving the centre of gravity forward

Finely tuned SA trigger with a straight centre

Magazine funnel attachment on the mouth for fast reloading

Prominent checkering on the grip for the most reliable grip

75 TS

### TECHNICAL DATA

MODEL	HEIGHT/WIDTH/LENGTH	BARREL LENGTH	WEIGHT	CALIBER	MAGAZINE CAPACITY	SIGHTS	TRIGGER	FRAME	GRIPS	SAFETY FEATURES
CZ 75 TS ORANGE	150×45×225 mm	130 mm	1,27 kg	9×19, .40 S&W	20, 17	Fibre optic front sight Height adjustable visor	SA	Steel	Aluminium	Safety notch, Manual safety
CZ 75 TS CZECHMATE	140×62×266 mm	130 mm	1,36 kg	9×19, 9 mm MAJOR	20, 20	Collimator, Fixed	SA	Steel	Aluminium	Safety notch, Manual safety

# CZ 75 SERIES



FULL-SIZE  
**CZ 75 B Ω**

9×19 | 16

A new generation of the timeless CZ 75 B model with an OMEGA trigger mechanism with manual safety/decocking controls on both sides. The shape of the trigger and hammer have been modernized for improved control, the steel sights have three luminescent dots.



FULL-SIZE  
**CZ 75 B**

9×19 | 16 (15)

A modern version of one of the most famous pistols of all time. This all-steel large-calibre SA/DA pistol with an external hammer still captivates users with its superb ergonomics and low trigger pull weight. The letter B stands for the automatic striker block which improves drop safety.



COMPACT  
**CZ 75 P-01 Ω**

9×19 | 14 (15)

A popular compact with a frame made of aluminium alloy, equipped with the OMEGA trigger mechanism with easily exchangeable manual safety/decocking controls on both sides. The pistol also has a modernized trigger, hammer and steel sights with luminescent dots.



Low bore axis



Two pairs of cocking grooves for smooth and easy drawing



Large magazine capacity



Extended magazine release, easy to fit either side



Magazine mouth designed for fast reloading



Ergonomic rubber grip panels

75

TECHNICAL DATA

MODEL	HEIGHT/WIDTH/LENGTH	BARREL LENGTH	WEIGHT	CALIBER	MAGAZINE CAPACITY	SIGHTS	TRIGGER	FRAME	GRIPS	SAFETY FEATURES
CZ 75 B Ω	138×35×206 mm	120 mm	1,00 kg	9×19	16	Luminescent	SA/DA	Steel	Rubber	Firing pin block, Decocking/manual safety, Safety notch
CZ 75 B	138×35×206 mm	120 mm	1,00 kg	9×19	16 (15)	Luminescent	SA/DA	Steel	Polymer	Firing pin block, Safety notch, Manual safety
CZ 75 P-01 Ω	128×38×184 mm	98,5 mm	0,80 kg	9×19	14 (15)	Luminescent	SA/DA	Aluminium alloy	Rubber	Firing pin block, Decocking/manual safety, Safety notch

ADAPTER  
**CZ P-07 KADET**

.22 LR | 10

A complete conversion kit for the easy and fast conversion of large-calibre CZ P-09 models to .22 LR calibre. Included in the standard accessories is a set of recoil springs ensuring reliable function for all kinds of ammunition, and an original 10-round magazine.



ADAPTER  
**CZ P-09 KADET**

.22 LR | 10

A complete conversion kit for the easy and fast conversion of large-calibre CZ P-09 models to .22 LR calibre. Included in the standard accessories is a set of recoil springs ensuring reliable function for all kinds of ammunition, and an original 10-round magazine.



ADAPTER  
**CZ 75 SP-01 KADET**

.22 LR | 10

A conversion kit for the conversion of pistols from the CZ 75 (including the CZ 75 B Ω and the compact models), CZ 85 and CZ SP-01 series to .22 LR calibre. The adapter is equipped with its own height and side adjustable sights. We recommend the conversion be carried out by a specialized workshop or a gunsmith.



ADAPTER  
**CZ SHADOW 2 KADET**

.22 LR | 10

Training of shooting has never been more fun, not to mention lower operating costs. With this conversion kit, a user can easily and quickly convert the large-calibre CZ SHADOW 2 model to a highly precise and reliable rimfire version with the exact same controls.



KADET



TECHNICAL DATA

MODEL	HEIGHT/WIDTH/LENGTH	BARREL LENGTH	WEIGHT	CALIBER	MAGAZINE CAPACITY
ADAPTER CZ P-07 KADET	40×27×170 mm	103 mm	0,27 kg	.22 LR	10
ADAPTER CZ P-09 KADET	41×27×186 mm	120 mm	0,30 kg	.22 LR	10
ADAPTER CZ SP-01 KADET	41×24×185 mm	120 mm	0,28 kg	.22 LR	10
ADAPTER CZ SHADOW 2 KADET	41×27×190 mm	120 mm	0,30 kg	.22 LR	10



# CZ KADET SERIES



COMPACT  
**CZ P-07 KADET**

.22 LR | 10

CZ P-07 KADET is an adapter for CZ P-07. In the slide of the adapter, there is a 95 mm cold-forged rimfire barrel in the .22LR calibre with a 16 inch right hand lead. The trigger mechanism allows the user to change between hammer decocking and a manual safety: The gun can be secured by a safety or by decocking. Depending on the version, one or both controls can be included.



COMPACT  
**CZ P-07 KADET**  
URBAN GREY

.22 LR | 10

CZ P-07 KADET is an adapter for CZ P-07. In the slide of the adapter, there is a 95 mm cold-forged rimfire barrel in the .22LR calibre with a 16 inch right hand lead. The trigger mechanism allows the user to change between hammer decocking and a manual safety: The gun can be secured by a safety or by decocking. Depending on the version, one or both controls can be included.

FULL-SIZE  
**CZ P-09 KADET**

.22 LR | 10

This rimfire version of the standard size SA/DA hammer model is extremely reliable. This is partly due to a set of recoil springs, included in the standard accessories, which allow the user to fine-tune the function in accordance with the particular type of .22 LR cartridges used.



FULL-SIZE  
**CZ P-09 KADET**

URBAN GREY

.22 LR | 10

This rimfire version of the standard-sized SA/DA hammer model features high reliability. It is partly due to the set of recoil springs which are part of the basic accessories and enable adjusting the pistol function to specifically used .22 LR cartridges.



KADET



TECHNICAL DATA

MODEL	HEIGHT/WIDTH/LENGTH	BARREL LENGTH	WEIGHT	CALIBER	MAGAZINE CAPACITY	SIGHTS	TRIGGER	FRAME	SAFETY FEATURES
CZ P-07 KADET	137×37,5×191 mm	103 mm	0,56 kg	.22 LR	10	Height adjustable visor	SA/DA	Highly durable polymer	Decocking/manual safety, Safety notch
CZ P-07 KADET URBAN GREY	137×37,5×191 mm	103 mm	0,56 kg	.22 LR	10	Height adjustable visor	SA/DA	Highly durable polymer	Decocking/manual safety, Safety notch
CZ P-09 KADET	147×37×208 mm	120 mm	0,64 kg	.22 LR	10	Height adjustable visor	SA/DA	Highly durable polymer	Decocking/manual safety, Safety notch
CZ P-09 KADET URBAN GREY	147×37,5×208 mm	120 mm	0,64 kg	.22 LR	10	Height adjustable visor	SA/DA	Highly durable polymer	Decocking/manual safety, Safety notch

**TECHNICAL DATA**

MODEL	HEIGHT/WIDTH/LENGHT	BARREL LENGTH	WEIGHT	CALIBER	MAGAZINE CAPACITY	SIGHTS	TRIGGER	FRAME	GRIPS	SAFETY FEATURES
<b>CZ P-10 SERIES</b>										
CZ P-10 M	112×25,5×160,5 mm	85 mm	0,57 kg	9×19	7	Luminescent	SFDA	Highly durable polymer	–	Trigger safety; drop safety
CZ P-10 S	116×32×170 mm	90 mm	0,71 kg	9×19	12 (14)	Luminescent, Tritium	SFDA	Highly durable polymer	–	Striker block; Drop safety, Trigger bar safety
CZ P-10 C	132×32×187 mm	102 mm	0,74 kg	9×19, 9×21, .380 AUTO	15 (17)	Luminescent, Tritium	SFDA	Highly durable polymer	–	Trigger safety; drop safety, Trigger bar safety, Firing pin block (drop safety)
CZ P-10 C OR	132×32×187 mm	102 mm	0,74 kg	9×19	15	Luminescent, Tritium	SFDA	Highly durable polymer	–	Trigger safety; Drop safety, Trigger bar safety, Firing pin block (drop safety)
CZ P-10 SC	132×32×203 mm	114 mm	0,78 kg	9×19	15 (17)	Luminescent, Tritium	SFDA	Highly durable polymer	–	Trigger bar safety, Firing pin block (drop safety)
CZ P-10 F	150×32×203 mm	114 mm	0,80 kg	9×19, 9×21	19	Luminescent, Tritium	SFDA	Highly durable polymer	–	Trigger safety; Drop safety, Trigger bar safety, Firing pin block (drop safety)
<b>CZ P-07/09 SERIES</b>										
CZ P-09	148×37×208 mm	115 mm	0,89 kg	9×19	19	Luminescent	SA/DA	Highly durable polymer	–	Firing pin block, Decocking/manual safety, Safety notch
CZ P-09 FDE	148×37×208 mm	115 mm	0,89 kg	9×19	19	Tritium	SA/DA	Highly durable polymer	–	Firing pin block, Decocking/manual safety, Safety notch
CZ P-07	137×37×185 mm	95 mm	0,80 kg	9×19, .380 AUTO	15 (17), 15	Luminescent	SA/DA	Highly durable polymer	–	Firing pin block, Decocking/manual safety, Safety notch
<b>CZ SHADOW 2 SERIES</b>										
CZ SHADOW 2	157×34×217 mm	120 mm	1,33 kg	9×19, 9×21	19/10	Fibre optic front sight Height adjustable visor	SA/DA	Steel	Aluminium	Safety notch, Manual safety
CZ SHADOW 2 SA	157×34×217 mm	120/125 mm	1,33 kg	9×19	19	Fibre optic front sight Height adjustable visor	SA	Steel	Aluminium	Safety notch, Manual safety
CZ SHADOW 2 OR	157×34×217 mm	120 mm	1,33 kg	9×19, 9×21	19/10	Fibre optic front sight Height adjustable visor	SA/DA	Steel	Aluminium	Safety notch, Manual safety
CZ SHADOW 2 URBAN GREY	157×34×217 mm	120 mm	1,33 kg	9×19, 9×21	19/10; 19	Fibre optic front sight Height adjustable visor	SA/DA	Steel	Aluminium	Safety notch, Manual safety
CZ SHADOW 2 ORANGE	157×34×217 mm	120 mm	1,33 kg	9×19, 9×21	19/10	Fibre optic front sight Height adjustable visor	SA/DA	Steel	Aluminium	Safety notch, Manual safety
<b>CZ SHADOW 1 SERIES</b>										
CZ 75 SP-01 SHADOW	150×42×209 mm	114/120 mm	1,18 kg	9×19, 9×21	19, 10	Fibre optic front sight Fixed rear sight	SA/DA	Steel	Rubber	Safety notch, Manual safety
CZ 75 SP-01 SHADOW ORANGE	147×37×207 mm	114/120 mm	1,18 kg	9×19, 9×21	19	Fixed visor, Safety notch	SA/DA	Steel	Aluminium	Safety notch, Manual safety
<b>CZ 75 TS SERIES</b>										
CZ 75 TS ORANGE	150×45×225 mm	130 mm	1,27 kg	9×19, .40 S&W	20, 17	Fibre optic front sight Height adjustable visor	SA	Steel	Aluminium	Safety notch, Manual safety
CZ 75 TS CZECHMATE	140×62×266 mm	130 mm	1,36 kg	9×19, 9 mm MAJOR	20, 20	Collimator, Fixed	SA	Steel	Aluminium	Safety notch, Manual safety
<b>CZ 75 SERIES</b>										
CZ 75 B Ω	138×35×206 mm	120 mm	1,00 kg	9×19	16	Luminescent	SA/DA	Steel	Rubber	Firing pin block, Decocking/manual safety, Safety notch
CZ 75 B	138×35×206 mm	120 mm	1,00 kg	9×19	16 (15)	Luminescent	SA/DA	Steel	Polymer	Firing pin block, Safety notch, Manual safety
CZ 75 P-01 Ω	128×38×184 mm	98,5 mm	0,80 kg	9×19	14 (15)	Luminescent	SA/DA	Aluminium alloy	Rubber	Firing pin block, Decocking/manual safety, Safety notch
<b>CZ KADET SERIES</b>										
CZ P-07 KADET	137×37,5×191 mm	103 mm	0,56 kg	.22 LR	10	Height adjustable visor	SA/DA	Highly durable polymer	–	Decocking/manual safety, Safety notch
CZ P-07 KADET URBAN GREY	137×37,5×191 mm	103 mm	0,56 kg	.22 LR	10	Height adjustable visor	SA/DA	Highly durable polymer	–	Decocking/manual safety, Safety notch
CZ P-09 KADET	147×37×208 mm	120 mm	0,64 kg	.22 LR	10	Height adjustable visor	SA/DA	Highly durable polymer	–	Decocking/manual safety, Safety notch
CZ P-09 KADET URBAN GREY	147×37,5×208 mm	120 mm	0,64 kg	.22 LR	10	Height adjustable visor	SA/DA	Highly durable polymer	–	Decocking/manual safety, Safety notch
ADAPTER CZ P-07 KADET	40×27×170 mm	103 mm	0,27 kg	.22 LR	10					
ADAPTER CZ P-09 KADET	41×27×186 mm	120 mm	0,30 kg	.22 LR	10					
ADAPTER CZ SP-01 KADET	41×24×185 mm	120 mm	0,28 kg	.22 LR	10					
ADAPTER CZ SHADOW 2 KADET	41×27×190 mm	120 mm	0,30 kg	.22 LR	10					

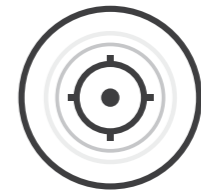
# RIMFIRE RIFLES

The gateway to the fascinating world of guns and shooting, an irreplaceable training aid, a never-boring source of entertainment, but also an effective hunting tool or equipment of target shooters. These are the traditional qualities of long firearms using rimfire ammunition, so-called rimfire rifles – and CZ models have been excellent examples of them for more than 70 years. The best proof is millions of satisfied customers and fans around the world and the fact that Česká zbrojovka a.s. is considered a global standard in this segment. The backbone of our current range is the brand new CZ 457 series of bolt action rifles with many outstanding features. This fast-growing family is closely followed by the original CZ 512 semi-automatic rimfire rifles.

# CZ 457 SERIES



LONG LIFE



HIGH ACCURACY



457

## A new standard of a modern rimfire rifle

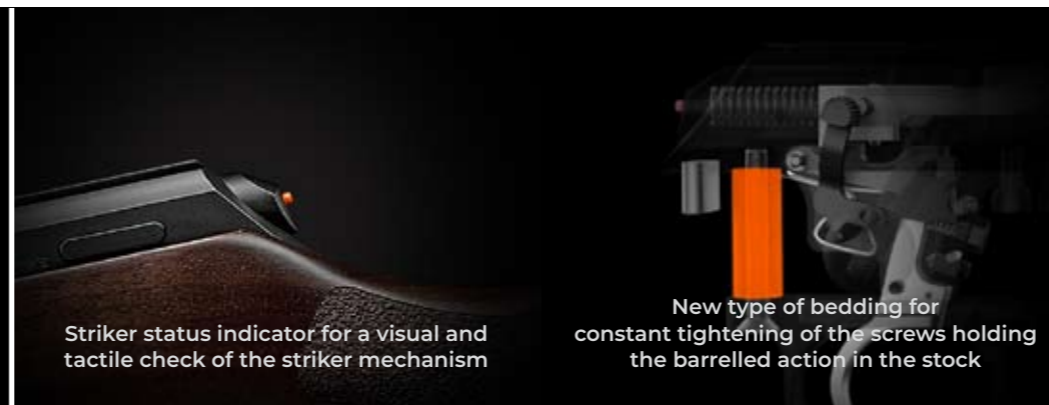
For over 70 years, our company has been the world leader in the development and manufacture of long guns using rimfire cartridges. Each and every one of our model series was the best on the market at the time, however, none brought such an enormous leap in the improvements of all the key user parameters as the CZ 457 family has.



Positive safety



60° angle of the bolt handle



Striker status indicator for a visual and tactile check of the striker mechanism



Lighter striker with a faster strike and lessened shock when fired



Adjustable trigger mechanism with a low trigger pull weight and smooth travel

New type of bedding for constant tightening of the screws holding the barrelled action in the stock

It was no easy feat, as we had to outdo ourselves as the global number one. But thanks to the all-round radical modernization our company has undergone over the last decade, we have accomplished our mission and created a new series of superb modern rimfire rifles for all groups of customers.

The CZ 457 series thus offers exceptional user comfort due to the easy, fast and reliable operation even with the riflescope

attached. To ensure maximum safety, there is a positive safety on the right side of the receiver, a striker status indicator and a separate bolt extractor control.

The accuracy has considerably improved with the use of a new adjustable trigger mechanism with a low trigger pull weight and excellent travel, a noticeably lighter striker and a new type of bedding. A literally revolutionary innovation is the extremely durable anti-corrosion surface finish of the metal parts that currently has no equal rival on the market.

The CZ 457 series has retained all the important benefits of the previous CZ rimfire rifle generation: the modular system allowing an easy replacement of barrels and change of calibres as well as the extremely reliable polymer magazines.

457



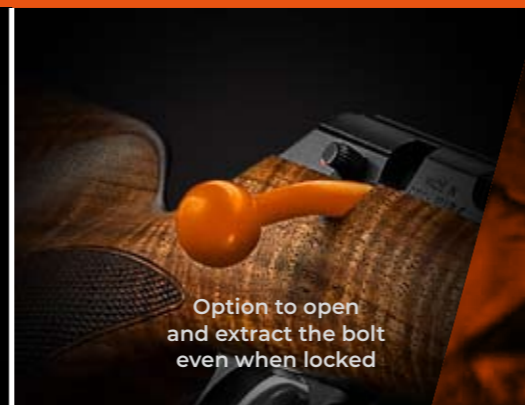
**TOP QUALITY COLD HAMMER FORGED BARRELS**  
**EASY REPLACEMENT OF BARREL WITH AN OPTION TO CHANGE THE CALIBRE**



Match chamber (selected models in .22 LR calibre)



Separate bolt extractor control



Option to open and extract the bolt even when locked



## CZ 457 PREMIUM

.17 HMR (1:9) | 5 .22 LR (1:16) | 5 .22 WMR (1:16) | 5

A model that will impress all lovers of hunting rifles of a classic shape. The stock with a cheekpiece and a tip with decorative material is made from premium walnut. The 630 mm thin-walled barrel has a 1/2x20 muzzle thread for the attachment of a silencer, a tangent rear sight and a fibre optic front sight.

NEW



## CZ 457 JAGUAR XII

.22 LR (1:16) | 10

A modernized variant of the popular CZ rimfire rifle with the longest barrel on offer (726 mm). The tangent rear sight is adjustable between 25 and 200 m, the stock is decorated with a jaguar motif, such as claw marks, which have been used in place of the traditional checkering. The basic accessories include a 10-round metal magazine.

NEW



NEW



NEW

## CZ 457 MTR

.22 LR (1:16) | 5

A highly precise model with a special stock made from premium walnut. The thick-walled, cold hammer forged match-grade barrel in .22 LR calibre features a match style chamber. Thanks to this and all other improvements of the new CZ 457 series, this model guarantees just 15 mm groups at a distance of 50 m.

## CZ 457 ROYAL

.17 HMR (1:9) | 5 .22 LR (1:16) | 5 .22 WMR (1:16) | 5

With this original model, Česká zbrojovka a.s. is returning to the roots of the creation of rimfire rifles. The premium walnut stock has a cheekpiece, the tip is from a fine material.

457

### TECHNICAL DATA

MODEL	LENGTH	BARREL LENGTH	WEIGHT	CALIBER	MAGAZINE CAPACITY	SUPPLY TYPE	SIGHTS	TRIGGER	CHEEKPIECE	L.O.P.	STOCK	STOCK SURFACE	BARREL	THREAD	COMPENSATOR
CZ 457 PREMIUM	1084 mm	630 mm (25")	2,9 kg	.17 HMR (1:9), .22 LR (1:16), .22 WMR (1:16)	5	Detachable magazine	Tangent	Adjustable	Yes	360 mm	Walnut	Oil	Forged	1/2×20 UNF	No
CZ 457 MTR	854 mm 967 mm	412,5 mm (17") 525 mm (21")	3,9 kg	.22 LR (1:16)	5	Detachable magazine	No	Adjustable	No	350 mm	Walnut	Oil	Forged	No	No
CZ 457 JAGUAR XII	1182 mm	726 mm (26")	2,9 kg	.22 LR (1:16)	10	Detachable magazine	Tangent	Adjustable	Yes	360 mm	Beech	Paint	Forged	1/2×20 UNF	No
CZ 457 ROYAL	865 mm 977 mm	412,5 mm (16") 525 mm (21")	2,9 kg	.17 HMR (1:9), .22 LR (1:16), .22 WMR (1:16)	5	Detachable magazine	No	Adjustable	Yes	360 mm	Walnut	Oil	Forged	1/2×20 UNF	No

## CZ 457 AMERICAN

.17 HMR (1:9) | 5 .22 LR (1:16) | 5 .22 WMR (1:16) | 5

A rimfire rifle embodying an example of classic American sport and hunting guns. The varnished American style stock is made from high quality walnut and the checkering on the grip surfaces incorporates a fleur-de-lis motif. The thin-walled, cold hammer forged barrel is 630 mm long and has no iron sights.

NEW



NEW



## CZ 457 LUX

.17 HMR (1:9) | 5 .22 LR (1:16) | 5 .22 WMR (1:16) | 5

A rimfire rifle in a classic design of a European hunting rifle. The varnished stock made of premium Turkish walnut has a cheekpiece and laser etched checkering on the grip surfaces. It provides comfortable and precise shooting with the help of iron sights placed on a 630 mm long thin-walled barrel.

NEW



NEW



## CZ 457 VARMINT

.17 HMR (1:9) | 5 .22 LR (1:16) | 5 .22 WMR (1:16) | 5

The new CZ 457 model series could not be complete without the popular model with a varnished American style stock and a heavy 525 mm long barrel. It is an ideal rifle for precise sport shooting as well as hunting at medium and longer distances. There is a 11mm groove on the top of the receiver for the attachment of a riflescope.

## CZ 457 TRAINING RIFLE

.22 LR (1:16) | 5

The latest of CZ Training Rifle models which are perfect for novice shooters of all ages. In this case, it is all the more true thanks to the benefits of the CZ 457 series that significantly increase user safety, accuracy and lifetime.

457

### TECHNICAL DATA

MODEL	LENGTH	BARREL LENGTH	WEIGHT	CALIBER	MAGAZINE CAPACITY	SUPPLY TYPE	SIGHTS	TRIGGER	CHEEKPIECE	L.O.P.	STOCK	STOCK SURFACE	BARREL	THREAD	COMPENSATOR
CZ 457 AMERICAN	1086 mm	630 mm (25")	2,8 kg	.17 HMR (1:9), .22 LR (1:16), .22 WMR (1:16)	5	Detachable magazine	No	Adjustable	No	360 mm	Walnut	Paint	Forged	1/2×20 UNF	No
CZ 457 VARMINT	981 mm	525 mm (21")	3,2 kg	.17 HMR (1:9), .22 LR (1:16), .22 WMR (1:16)	5	Detachable magazine	No	Adjustable	No	360 mm	Walnut	Paint	Forged	1/2×20 UNF	No
CZ 457 LUX	1086 mm	630 mm (25")	2,9 kg	.17 HMR (1:9), .22 LR (1:16), .22 WMR (1:16)	5	Detachable magazine	Tangent	Adjustable	Yes	360 mm	Walnut	Paint	Forged	1/2×20 UNF	No
CZ 457 TRAINING RIFLE	1085 mm	630 mm (25")	2,9 kg	.22 LR (1:16)	5	Detachable magazine	Tangent	Adjustable	No	360 mm	Beech	Paint	Forged	1/2×20 UNF	No

# CZ 512 SERIES



## CZ 512 TACTICAL

.22 LR (1:16) | 25    .22 WMR (1:16) | 10

A popular semi-automatic rimfire rifle in an attractive tactical design. This model has an ergonomic pistol grip, a plastic stock adjustable in length, a forend made from aluminium alloy and a 530 mm long Picatinny rail for the attachment of accessories. In the .22 LR calibre, a 25-round magazine is supplied as standard.



## CZ 512

.22 LR (1:16) | 5    .22 WMR (1:16) | 5

A modern semi-automatic rimfire rifle which is characterized by exceptional reliability, accuracy and easy control. Thanks to the excellent design, it is suitable both for sport shooting and hunting, as demonstrated by the selection of calibres on offer. In addition to the basic 5-round magazine, 10-round magazines are available as a further purchase. For the .22 LR calibre, a 25-round magazine is also available.



### Shooting with rimfire rifles has never been so comfortable and fast!

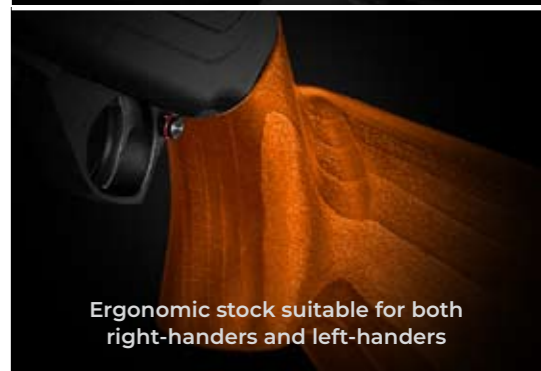
Take seven decades of experience with the development and manufacture of long guns for rimfire cartridges, mix it with the unique know-how concerning the challenging design and production of automatic firearms, season with the most advanced manufacturing technologies and you get the best semi-automatic rimfire rifles on the market.



512

#### TECHNICAL DATA

MODEL	LENGTH	BARREL LENGTH	WEIGHT	CALIBER	MAGAZINE CAPACITY	SUPPLY TYPE	SIGHTS	TRIGGER	CHEEKPIECE	L.O.P.	STOCK	STOCK SURFACE	BARREL	THREAD COMPENSATOR
CZ 512 TACTICAL	839/920 mm	419 mm (16")	2,8 kg	.22 LR (1:16), .22 WMR (1:16)	25, 10	Detachable magazine	No	Adjustable	Yes	305-390 mm	Polymer	-	Forged	1/2x28 No
CZ 512	1000 mm	525 mm (21")	2,7 kg	.22 LR (1:16), .22 WMR (1:16)	5	Detachable magazine	Adjustable	Adjustable	No	350 mm	Beech	Paint	Forged	No No





## TECHNICAL DATA

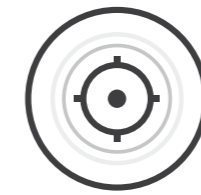
MODEL	LENGTH	BARREL LENGTH	WEIGHT	CALIBER	MAGAZINE CAPACITY	SUPPLY TYPE	SIGHTS	TRIGGER	CHEEKPIECE	L.O.P.	STOCK	STOCK SURFACE	BARREL	THREAD	COMPENSATOR
<b>CZ 457 SERIES</b>															
CZ 457 PREMIUM	1084 mm	630 mm (25")	2,9 kg	.17 HMR (1:9), .22 LR (1:16), .22 WMR (1:16)	5	Detachable magazine	Tangent	Adjustable	Yes	360 mm	Walnut	Oil	Forged	1/2×20 UNF	No
CZ 457 MTR	854 mm 967 mm	412,5 mm (17") 525 mm (21")	3,9 kg	.22 LR (1:16)	5	Detachable magazine	No	Adjustable	No	350 mm	Walnut	Oil	Forged	No	No
CZ 457 JAGUAR XII	1182 mm	726 mm (26")	2,9 kg	.22 LR (1:16)	10	Detachable magazine	Tangent	Adjustable	Yes	360 mm	Beech	Paint	Forged	1/2×20 UNF	No
CZ 457 ROYAL	865 mm 977 mm	412,5 mm (16") 525 mm (21")	2,9 kg	.17 HMR (1:9), .22 LR (1:16), .22 WMR (1:16)	5	Detachable magazine	No	Adjustable	Yes	360 mm	Walnut	Oil	Forged	1/2×20 UNF	No
CZ 457 AMERICAN	1086 mm	630 mm (25")	2,8 kg	.17 HMR (1:9), .22 LR (1:16), .22 WMR (1:16)	5	Detachable magazine	No	Adjustable	No	360 mm	Walnut	Paint	Forged	1/2×20 UNF	No
CZ 457 VARMINT	981 mm	525 mm (21")	3,2 kg	.17 HMR (1:9), .22 LR (1:16), .22 WMR (1:16)	5	Detachable magazine	No	Adjustable	No	360 mm	Walnut	Paint	Forged	1/2×20 UNF	No
CZ 457 LUX	1086 mm	630 mm (25")	2,9 kg	.17 HMR (1:9), .22 LR (1:16), .22 WMR (1:16)	5	Detachable magazine	Tangent	Adjustable	Yes	360 mm	Walnut	Paint	Forged	1/2×20 UNF	No
CZ 457 TRAINING RIFLE	1085 mm	630 mm (25")	2,9 kg	.22 LR (1:16)	5	Detachable magazine	Tangent	Adjustable	No	360 mm	Beech	Paint	Forged	1/2×20 UNF	No
<b>CZ 512 SERIES</b>															
CZ 512 TACTICAL	839/920 mm	419 mm (16")	2,8 kg	.22 LR (1:16), .22 WMR (1:16)	25, 10	Detachable magazine	No	Adjustable	Yes	305–390 mm	Polymer	–	Forged	1/2×28	No
CZ 512	1000 mm	525 mm (21")	2,7 kg	.22 LR (1:16), .22 WMR (1:16)	5	Detachable magazine	Adjustable	Adjustable	No	350 mm	Beech	Paint	Forged	No	No



# **CENTERFIRE** RIFLES

For more than half a century, CZ rifles have ruled the global market with long arms for hunting and sport. Therefore, in this case, just like in all other products, the CZ brand is synonymous with design originality, reliability, accuracy, first-rate quality and affordable prices. Time and again, this has been confirmed by the hundreds of thousands of happy customers, whose numbers increase significantly every year.

# CZ 527 SERIES



HIGH ACCURACY



DURABILITY



527

## The global number one in the category of light rifles for hunting and sport shooting

The CZ 527 model series has been in production for three decades and still belongs amongst the best on the global market. This success is due not only to the perfect design base of these exceptionally accurate and reliable firearms, but also to the fact that we do not rest on our laurels.



Highly reliable "mini Mauser" action



Superb iron sights with fiber optic front sight



Variants without iron sights have muzzle thread for the attachment of a silencer and other accessories

Single set trigger mechanism



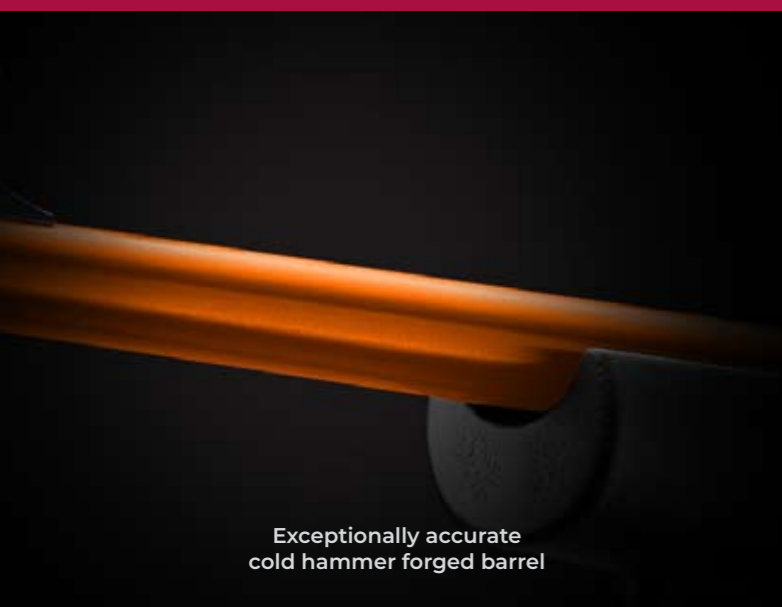
On the contrary – we continuously look for ways to improve our products and meet the current requirements and needs of our customers.

The CZ 527 rifles have therefore already gone through several upgrades. The most extensive so far took place in 2018 and resulted in substantial improvements of all the key parameters. Because of that, the current CZ 527 models are even more accurate, durable, reliable and more user-friendly than ever before. We also regularly

introduce modern calibres as well as completely new variants with stocks in original designs and cold hammer forged barrels in various lengths.

Simply, we keep in mind the needs of all groups of customers. Whether you are looking for a powerful light rifle for varmint control, a work instrument, a rifle for hobby shooting or a sport special, you will be able to pick the model just for you with the highest satisfaction guaranteed.

527



Exceptionally accurate  
cold hammer forged barrel



Premium wooden  
stocks in oil finish



## CZ 527 CARBINE

.223 Rem. | 5 7,62x39 | 5

High power in a compact size. This all-time favourite variant of the CZ 527 rifle boasts a 470 mm long barrel with iron sights (a side-adjustable rear sight and a height-adjustable front sight accentuated by red fibre optics) and has an oiled walnut stock.



## CZ 527 LUX

.22 Hornet | 5 .223 Rem. | 5

An elegant model chambered in two classic calibres of the CZ 527 platform. This model is distinguished by an oiled premium Turkish walnut stock in traditional European style design with a cheekpiece. The 600 mm cold hammer forged barrel is equipped with iron sights.



## CZ 527 CARBINE SYNTHETIC

.223 Rem. | 5 7,62x39 | 5

Our designers and product managers take an active part in hunting and are very well aware of which gun is suitable for the wilderness. Thanks to this expertise, a new model was born, combining the advantages of the CZ 527 CARBINE compact light rifle and the benefits of a soft-touch surface treatment.

527

### TECHNICAL DATA

MODEL	LENGTH	BARREL LENGTH	WEIGHT	CALIBER	MAGAZINE CAPACITY	SUPPLY TYPE	SIGHTS	TRIGGER	CHEEKPIECE	L.O.P.	STOCK	STOCK SURFACE	BARREL	THREAD COMPENSATOR
CZ 527 CARBINE	950 mm	470 mm (19")	2,7 kg	.223 Rem. (1:9), 7,62x39 (1:9,4)	5	Detachable magazine	Yes	SST	No	355 mm	Walnut	Oil	Forged	No No
CZ 527 CARBINE SYNTHETIC	950 mm	470 mm (19")	2,7 kg	.223 Rem. (1:9), 7,62x39 (1:9,4)	5	Detachable magazine	Yes	SST	No	355 mm	Polymer	Soft-touch	Forged	No No
CZ 527 LUX	1077 mm	600 mm (24")	2,8 kg	.22 Hornet (1:16), .223 Rem. (1:9)	5	Detachable magazine	Yes	SST	Yes	360 mm	Walnut	Oil	Forged	No No



## CZ 527 AMERICAN

.22 Hornet | 5    .223 Rem. | 5    6,5 Grendel | 5    7,62×39 | 5

A popular model with a walnut stock in a classic American style and a cold hammer forged barrel without iron sights. A single set trigger is fitted as standard, and the barrel features a recessed target crown.

NEW



## CZ 527 VARMINT

.223 Rem. | 5

A model with a heavy, 650 mm long cold hammer forged barrel, intended for highly precise shooting at middle and long distances. At the end of the barrel, there is a M15x1 muzzle thread. Czech elite shooters have garnered a lot of success with the sport variants of this rifle in Combined game shooting (FITASC).



## CZ 527 VARMINT MTR

.223 Rem. | 5    6,5 Grendel | 5

A model that offers everything a shooter may require of a highly precise and efficient modern rifle from the Lite category. The trigger has an adjustable trigger pull weight and trigger travel. The thick-walled cold hammer forged barrel is 650 mm long and has a M18x1 thread on a target pattern muzzle for the attachment of accessories.

527

### TECHNICAL DATA

MODEL	LENGTH	BARREL LENGTH	WEIGHT	CALIBER	MAGAZINE CAPACITY	SUPPLY TYPE	SIGHTS	TRIGGER	CHEEKPIECE	L.O.P.	STOCK	STOCK SURFACE	BARREL	THREAD	COMPENSATOR
CZ 527 AMERICAN	1025 mm	555 mm (22")	2,7 kg	.22 Hornet (1:16), .223 Rem. (1:9), 6,5 Grendel (1:8), 7,62×39 (1:9,4)	5	Detachable magazine	No	SST	No	355 mm	Walnut	Paint	Forged	No	No
CZ 527 VARMINT MTR	1130 mm	650 mm (26")	4 kg	.223 Rem. (1:9), 6,5 Grendel (1:8)	5	Detachable magazine	No	Adjustable	No	355 mm	Walnut	Oil	Forged	M18×1	No
CZ 527 VARMINT	1085 mm	650 mm (26")	3,3 kg	.223 Rem. (1:9)	5	Detachable magazine	No	SST	No	355 mm	Walnut	Paint	Forged	M15×1	No



## CZ 527 VARMINT LAMINATED

.223 Rem. | 5

This model in a popular calibre has a modern American style stock made of grey, laminated varnished wood. The thick-walled cold hammer forged barrel without iron sights is 610 mm long and has a M15×1 muzzle thread.

NEW



## CZ 527 NIGHT SKY EDITION

.223 Rem. | 3

A rifle whose stock resembles a night sky full of stars. The uniqueness of this model is further complemented by other elements, such as a silver coloured trigger and a muzzle compensator fitted on a cold hammer forged barrel without iron sights.



## CZ 527 THUMBHOLE

.17 Hornet | 5 .223 Rem. | 5

A popular 21st century mini Mauser whose Thumbhole style inline stock brings a new level of shooting experience. Thanks to the powerful cartridges, it is the perfect gun for precise shooting at longer distances.

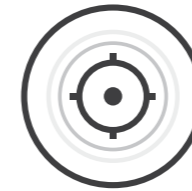


527

### TECHNICAL DATA

MODEL	LENGTH	BARREL LENGTH	WEIGHT	CALIBER	MAGAZINE CAPACITY	SUPPLY TYPE	SIGHTS	TRIGGER	CHEEKPIECE	L.O.P.	STOCK	STOCK SURFACE	BARREL	THREAD COMPENSATOR
CZ 527 VARMINT LAMINATED	1062 mm	610 mm (24")	3,6 kg	.223 Rem. (1:9)	5	Detachable magazine	No	SST	No	355 mm	Laminated wood	Paint	Forged	M15×1 No
CZ 527 NIGHT SKY EDITION	1025 mm	555 mm (22")	2,6 kg	.223 Rem. (1:9)	3	Detachable magazine	No	SST	No	355 mm	Polymer	Soft-touch	Forged	M14×1 Yes
CZ 527 THUMBHOLE	1062 mm	610 mm (24")	3,6 kg	.17 Hornet (1:9), .223 Rem. (1:9)	5	Detachable magazine	No	SST	No	355 mm	Laminated wood	Paint	Forged	M15×1 No

# CZ 557 SERIES



HIGH ACCURACY



DURABILITY



## Perfect bolt-action rifles for hunting and sport shooting in the 21<sup>st</sup> century

Česká zbrojovka a.s. has been producing long centrefire guns using ball cartridges since the 1960's and their products have always been amongst the best on the market. This applies even more so to the latest CZ 557 model series that combines the best of our long tradition with the most advanced design and manufacture processes.

At the heart of these firearms lies the modernized mini Mauser barrelled action with a short extractor and spring loaded ejector. The first-rate accuracy of all versions is guaranteed by the cold hammer forged barrels, strictly automated production with minimal tolerances, perfect ergonomics and a fully adjustable trigger mechanism. Additional benefits of this model series include a silent and easy to reach manual safety and absolute reliability for all calibres.



Highly accurate cold hammer forged barrel



Very easy to align front sight with fibre optics



Side-adjustable rear sight with an option to change the inclination



Fully adjustable trigger in the basic version

557



Our comprehensive and continuously extended portfolio of CZ 557 rifles will appeal to all target groups of customers whose requirements and needs we are always prepared to meet. See for yourself!



Perfect ergonomics



## CZ 557 LUX

7×64 | 5 .30-06 Sprg. | 5 6,5×55 | 5 8×57 IS | 5

The flagship of the Medium category. This model is made in four of the most popular calibres, its cold hammer forged barrel with iron sights is 520 mm long. The luxurious stock made of high-quality oiled walnut has a cheekpiece and an ergonomic pistol grip.



## CZ 557 LUX LH

8×57 IS | 5 .30-06 Sprg. | 5 .308 Win. | 4

A model for shooters with a dominant left hand, in other words, a mirror version of the CZ 557 LUX with a 520 mm long cold hammer forged barrel equipped with adjustable iron sights. This model is produced in the two most popular calibres and is available with a fixed magazine as well as a detachable magazine.



## CZ 557 LUX SA

.308 Win. | 4

The SA in this model with a box magazine stands for Short Action. It is the obvious choice for all shooters who apart from accuracy and reliability also seek fast reloading. Thanks to the shorter receiver and bolt, the speed of reloading in this variant really is fast.



## CZ 557 LUX II.

7×64 | 5 .30-06 Sprg. | 5 .308 Win. | 4 8×57 IS | 5

This variant of the superb CZ 557 LUX rifle is a perfect choice for customers who prefer the more traditional hunting rifles in European style. Their needs have been taken into account when designing the barrel, trigger and the safety.

557

### TECHNICAL DATA

MODEL	LENGTH	BARREL LENGTH	WEIGHT	CALIBER	MAGAZINE CAPACITY	SUPPLY TYPE	SIGHTS	TRIGGER	CHEEKPIECE	L.O.P.	STOCK	STOCK SURFACE	BARREL	THREAD COMPENSATOR
CZ 557 LUX	1070 mm	520 mm (21")	3,3 kg	7×64 (1:8,6), .30-06 Sprg. (1:10), 6,5×55 (1:8,6), 8×57 IS (1:9,4)	5	Fixed magazine	Yes	Adjustable	Yes	370 mm	Walnut	Oil	Forged	No No
CZ 557 LUX II.	1160 mm	610 mm (24")	3,4 kg	.30-06 Sprg. (1:10), 7×64 (1:8,6), 8×57 IS (1:9,4), .308 Win. (1:10)	5, 5, 4	Fixed magazine Detachable magazine	Yes	SST	Yes	370 mm	Walnut	Oil	Forged	No No
CZ 557 LUX LH	1040, 1070 mm	520 mm (21")	3,3 kg	.30-06 Sprg. (1:10), .308 Win. (1:10), 8×57 IS (1:9,4)	5, 4	Fixed magazine Detachable magazine	Yes	Adjustable	Yes	370 mm	Walnut	Oil	Forged	No No
CZ 557 LUX SA	1040 mm	520 mm (21")	3,1 kg	.308 Win. (1:10)	4	Detachable magazine	Yes	Adjustable	Yes	370 mm	Walnut	Oil	Forged	No No

## CZ 557 RANGE RIFLE

.308 Win. | 10

A universal large capacity compact powerful rifle, intended chiefly for everyday use by professional hunters. This rifle is characterized by a two stage trigger, and in addition to iron sights, there is also a Weaver rail at the top of the receiver.



**NEW**



## CZ 557 ECLIPSE

.30-06 Sprg. | 5 .308 Win. | 5

We think of everybody. We know that some shooters only wish to spend the minimum amount of money but still require quality and accuracy. For such purposes, we have therefore expanded our portfolio by this "starter" CZ 557 model.

## CZ 557 AMERICAN

**NEW** 6,5 Creedmore | 4 **NEW** 7 mm-08 Rem | 4

CZ 557 AMERICAN has an oiled walnut stock with a cheek piece and a floating barrel. This popular model does not have iron sights, it is designed exclusively for shooting with optical sights.



## CZ 557 AMERICAN LH

.30-06 Sprg. | 5 .308 Win. | 4

A mirror version of the popular CZ 557 AMERICAN model without iron sights for users with a dominant left hand. They will undoubtedly welcome the fact that the oiled walnut stock with a typical straight forend has a cheekpiece on the right side of the buttstock for comfortable aiming.



557

### TECHNICAL DATA

MODEL	LENGTH	BARREL LENGTH	WEIGHT	CALIBER	MAGAZINE CAPACITY	SUPPLY TYPE	SIGHTS	TRIGGER	CHEEKPIECE	L.O.P.	STOCK	STOCK SURFACE	BARREL	THREAD COMPENSATOR
CZ 557 RANGE RIFLE	1030 mm	520 mm (21")	3,3 kg	.308 Win. (1:10)	10	Detachable magazine	Yes	Adjustable	No	360 mm	Beech	Paint	Forged	No No
CZ 557 ECLIPSE	1042 mm	520 mm (21")	3,1 kg	.30-06 Sprg. (1:10), .308 Win. (1:10)	5	Fixed magazine	Yes/No	Adjustable	No	360 mm	Polymer	-	Forged	M14×1 No
CZ 557 AMERICAN	1155 mm	610 mm (24")	3,3 kg	<b>NEW</b> 6,5 Creedmore, 7mm-08 Rem	4	Detachable magazine	No	Adjustable	Yes	355 mm	Walnut	Oil	Forged	M14×1 Yes
CZ 557 AMERICAN LH	1116 mm	610 mm (24")	3,3 kg	.30-06 Sprg. (1:10) 308 Win. (1:10)	4 5	Fixed magazine Detachable magazine	No	Adjustable	Yes	355 mm	Walnut	Oil	Forged	No No

## CZ 557 VARMINT

.308 Win. | 10

This effective and highly accurate rifle with a 650 mm long heavy barrel is suitable for target shooting and hunting, thanks to the ergonomic stock made of premium walnut. The Weaver rail at the top of the receiver allows for easy attachment of a riflescope.



## CZ 557 VARMINT SYNTHETIC

.308 Win. | 10

A multi-purpose, large capacity and highly precise rifle with a heavy varmint style barrel and an interface system for the quick attachment of a riflescope. The reinforced symmetrical polymer stock in soft-touch finish is equipped with an adjustable cheekpiece.



## CZ 557 VARMINT LAMINATED

.308 Win. | 10, 4

Highly accurate .308 Win. calibre centrefire rifle with an ergonomic stock made of grey-brown laminated wood. This aesthetically attractive composite material stands out for its strength and weather resistance.

557

### TECHNICAL DATA

MODEL	LENGTH	BARREL LENGTH	WEIGHT	CALIBER	MAGAZINE CAPACITY	SUPPLY TYPE	SIGHTS	TRIGGER	CHEEKPIECE	L.O.P.	STOCK	STOCK SURFACE	BARREL	THREAD	COMPENSATOR
CZ 557 VARMINT	1170 mm	650 mm (26")	5 kg	.308 Win. (1:10)	10	Detachable magazine	No	Adjustable	No	370 mm	Walnut	Oil	Forged	No	No
CZ 557 VARMINT SYNTHETIC	1030 mm	520 mm (21")	4 kg	.308 Win. (1:10)	10	Detachable magazine	No	Adjustable	Yes	360 mm	Polymer	Soft-touch	Forged	M18x1	No
CZ 557 VARMINT LAMINATED	1130 mm	610mm (24")	5 kg	.308 Win. (1:10)	10, 4	Detachable magazine	No	Adjustable	Yes	360 mm	Laminated wood	Paint	Forged	M18x1	No

# CZ 557 PREDATOR

.30-06 Sprg. | 5 .308 Win. | 4 6,5×55 | 5

In line with modern hunting trends, the polymer stock of this model has a soft-touch finish for comfortable and reliable grip in a forest camouflage pattern. The shooting comfort is further enhanced by an adjustable cheekpiece and a compensator is fitted on the M14×1 muzzle thread.



## CZ 557 SUNSET VALLEY

.30-06 Sprg. | 5 .308 Win. | 5

A small-lot production of finely tuned rifles, the CZ 557 Valley with laminated Thumbhole style stocks. These models are available in .308 Winchester and .30-06 Springfield calibres.



## CZ 557 GREEN VALLEY

.30-06 Sprg. | 5 .308 Win. | 5

A small-lot production of finely tuned rifles, the CZ 557 Valley with laminated Thumbhole style stocks. These models are available in .308 Winchester and .30-06 Springfield calibres.



## CZ 557 GREY VALLEY

.30-06 Sprg. | 5 .308 Win. | 5

A small-lot production of finely tuned rifles, the CZ 557 Valley with laminated Thumbhole style stocks. These models are available in .308 Winchester and .30-06 Springfield calibres.



### Characteristic properties:

- Duralumin baseplate and ball end
- Improved bolt release button for easier control
- Jewelled bolt for smoother operation
- M14×1 muzzle thread with a compensator fitted
- Two lengths of barrel available (406 mm – Grey Valley, 520 mm – Green Valley and Sunset Valley)

557

### TECHNICAL DATA

MODEL	LENGTH	BARREL LENGTH	WEIGHT	CALIBER	MAGAZINE CAPACITY	SUPPLY TYPE	SIGHTS	TRIGGER	CHEEKPIECE	L.O.P.	STOCK	STOCK SURFACE	BARREL	THREAD COMPENSATOR
CZ 557 PREDATOR	1042 mm	520 mm (21")	3,2 kg	.30-06 Sprg. (1:10), 6,5×55 (1:8,6) .308 Win. (1:10)	5, 4	Fixed magazine	No	Adjustable	Yes	360 mm	Polymer	Soft-touch	Forged	M14×1 Yes
CZ 557 SUNSET VALLEY	1042 mm	520 mm (21")	3,2 kg	.30-06 Sprg. (1:10), .308 Win. (1:10)	5	Fixed magazine	No	Adjustable	Yes	360 mm	Laminated wood	Oil	Forged	M14×1 Yes
CZ 557 GREEN VALLEY	1042 mm	406 mm (16")	3,2 kg	.30-06 Sprg. (1:10), .308 Win. (1:10)	5	Fixed magazine	No	Adjustable	Yes	360 mm	Laminated wood	Oil	Forged	M14×1 Yes
CZ 557 GREY VALLEY	1042 mm	520 mm (21")	3,2 kg	.30-06 Sprg. (1:10), .308 Win. (1:10)	5	Fixed magazine	No	Adjustable	Yes	360 mm	Laminated wood	Oil	Forged	M14×1 Yes

# CZ **TSR**

.308 WIN. | 10

A sniper and sport special optimized for highly accurate long-distance shooting. In the development of this cutting-edge repeating rifle, CZ worked closely with elite police and military professionals.

**NEW**



**FOLDABLE STOCK WITH RELIABLE RETENTION IN BOTH POSITIONS, OPTION TO CHANGE DIRECTION OF FOLDING**

**SIDE ADJUSTABLE CHEEKPIECE**

**ERGONOMIC PISTOL GRIP WITH STORAGE SPACE AND INTERCHANGEABLE BACKSTRAPS**

**FULLY ADJUSTABLE BUTTPLATE**

**INTERCHANGEABLE BALL END ON THE BOLT**

**EFFECTIVE COMPENSATOR ON M18x1 MUZZLE THREAD**

## The ultimate sniper and sport special for highly accurate long distance shooting

The CZ TSR model in powerful .308 Win. calibre is the latest answer to an extremely accurate gun for shooting at a distance of 500 to 800 metres. Its design is attuned to a single purpose – to reliably hit a target under all circumstances.

TSR



Helical fluting pattern on the bolt for increased resistance to soiling



STANAG 4694 mounting rails



10-round .308 Win. magazine



Adjustable double stage trigger



Bolt handle designed for reliable and fast reloading even with a riflescope fitted



Cold hammer forged thick-walled barrel with guaranteed SUB-MOA accuracy

**TECHNICAL DATA**

MODEL	BARREL LENGTH	CALIBER	MAGAZINE CAPACITY	WEIGHT WITHOUT MAGAZINE	FRAME	HEIGHT	THREAD	COMPENSATOR	OVERALL LENGTH WITH FOLDED/ UNFOLDED-EXTENDED STOCK	WIDTH WITH UNFOLDED/FOLDED STOCK
CZ TSR	660mm ± 1 (26")	.308 Win. (1:11)	10	6,3 kg	Aluminium alloy 7075 T6	192 ± 5 mm	M18x1	Muzzle brake	931/1188 ± 10 mm	70/95 ± 5 mm

TECHNICAL DATA

MODEL	LENGTH	BARREL LENGTH	WEIGHT	CALIBER	MAGAZINE CAPACITY	SUPPLY TYPE	SIGHTS	TRIGGER	CHEEKPIECE	L.O.P.	STOCK	STOCK SURFACE	BARREL	THREAD	COMPENSATOR
<b>CZ 527 SERIES</b>															
CZ 527 CARBINE	950 mm	470 mm (19")	2,7 kg	.223 Rem. (1:9), 7,62×39 (1:9,4)	5	Detachable magazine	Yes	SST	No	355 mm	Walnut	Oil	Forged	No	No
CZ 527 CARBINE SYNTHETIC	950 mm	470 mm (19")	2,7 kg	.223 Rem. (1:9), 7,62×39 (1:9,4)	5	Detachable magazine	Yes	SST	No	355 mm	Polymer	Soft-touch	Forged	No	No
CZ 527 LUX	1077 mm	600 mm (24")	2,8 kg	.22 Hornet (1:16), .223 Rem. (1:9)	5	Detachable magazine	Yes	SST	Yes	360 mm	Walnut	Oil	Forged	No	No
CZ 527 AMERICAN	1025 mm	555 mm (22")	2,7 kg	.22 Hornet (1:16), .223 Rem. (1:9), 6,5 Grendel (1:8), 7,62×39 (1:9,4)	5	Detachable magazine	No	SST	No	355 mm	Walnut	Paint	Forged	No	No
CZ 527 VARMINT MTR	1130 mm	650 mm (26")	4 kg	.223 Rem. (1:9), 6,5 Grendel (1:8)	5	Detachable magazine	No	Adjustable	No	355 mm	Walnut	Oil	Forged	M18×1	No
CZ 527 VARMINT	1085 mm	650 mm (26")	3,3 kg	.223 Rem. (1:9)	5	Detachable magazine	No	SST	No	355 mm	Walnut	Paint	Forged	M15×1	No
CZ 527 VARMINT LAMINATED	1062 mm	610 mm (24")	3,6 kg	.223 Rem. (1:9)	5	Detachable magazine	No	SST	No	355 mm	Laminated wood	Paint	Forged	M15×1	No
CZ 527 NIGHT SKY EDITION	1025 mm	555 mm (22")	2,6 kg	.223 Rem. (1:9)	3	Detachable magazine	No	SST	No	355 mm	Polymer	Soft-touch	Forged	M14×1	Yes
CZ 527 THUMBHOLE	1062 mm	610 mm (24")	3,6 kg	.17 Hornet (1:9), .223 Rem. (1:9)	5	Detachable magazine	No	SST	No	355 mm	Laminated wood	Paint	Forged	M15×1	No
<b>CZ 557 SERIES</b>															
CZ 557 LUX	1070 mm	520 mm (21")	3,3 kg	7×64 (1:8,6), .30-06 Sprg. (1:10), 6,5×55 (1:8,6), 8×57 IS (1:9,4)	5	Fixed magazine	Yes	Adjustable	Yes	370 mm	Walnut	Oil	Forged	No	No
CZ 557 LUX II.	1160 mm	610 mm (24")	3,4 kg	.30-06 Sprg. (1:10), 7×64 (1:8,6), 8×57 IS (1:9,4), .308 Win. (1:10)	5, 5 5, 4	Fixed magazine Detachable magazine	Yes	SST	Yes	370 mm	Walnut	Oil	Forged	No	No
CZ 557 LUX LH	1040, 1070 mm	520 mm (21")	3,3 kg	.30-06 Sprg. (1:10), .308 Win. (1:10), 8×57 IS (1:9,4)	5, 4 5	Fixed magazine Detachable magazine	Yes	Adjustable	Yes	370 mm	Walnut	Oil	Forged	No	No
CZ 557 LUX SA	1040 mm	520 mm (21")	3,1 kg	.308 Win. (1:10)	4	Detachable magazine	Yes	Adjustable	Yes	370 mm	Walnut	Oil	Forged	No	No
CZ 557 RANGE RIFLE	1030 mm	520 mm (21")	3,3 kg	.308 Win. (1:10)	10	Detachable magazine	Yes	Adjustable	No	360 mm	Beech	Paint	Forged	No	No
CZ 557 ECLIPSE	1042 mm	520 mm (21")	3,1 kg	.30-06 Sprg. (1:10), .308 Win. (1:10)	5	Fixed magazine	Yes/No	Adjustable	No	360 mm	Polymer	–	Forged	M14×1	No
CZ 557 AMERICAN	1155 mm	610 mm (24")	3,3 kg	<b>NEW</b> 6,5 Creedmore, 7mm-08 Rem	4	Detachable magazine	No	Adjustable	Yes	355 mm	Walnut	Oil	Forged	M14×1	Yes
CZ 557 AMERICAN LH	1116 mm	610 mm (24")	3,3 kg	.30-06 Sprg. (1:10) 308 Win. (1:10)	4 5	Fixed magazine Detachable magazine	No	Adjustable	Yes	355 mm	Walnut	Oil	Forged	No	No
CZ 557 VARMINT	1170 mm	650 mm (26")	5 kg	.308 Win. (1:10)	10	Detachable magazine	No	Adjustable	No	370 mm	Walnut	Oil	Forged	No	No
CZ 557 VARMINT SYNTHETIC	1030 mm	520 mm (21")	4 kg	.308 Win. (1:10)	10	Detachable magazine	No	Adjustable	Yes	360 mm	Polymer	Soft-touch	Forged	M18×1	No
CZ 557 VARMINT LAMINATED	1130 mm	610mm (24")	5 kg	.308 Win. (1:10)	10, 4	Detachable magazine	No	Adjustable	Yes	360 mm	Laminated wood	Paint	Forged	M18×1	No
CZ 557 PREDATOR	1042 mm	520 mm (21")	3,2 kg	.30-06 Sprg. (1:10), 6,5×55 (1:8,6) .308 Win. (1:10)	5, 5 4	Fixed magazine	No	Adjustable	Yes	360 mm	Polymer	Soft-touch	Forged	M14×1	Yes
CZ 557 SUNSET VALLEY	1042 mm	520 mm (21")	3,2 kg	.30-06 Sprg. (1:10), .308 Win. (1:10)	5	Fixed magazine	No	Adjustable	Yes	360 mm	Laminated wood	Oil	Forged	M14×1	Yes
CZ 557 GREEN VALLEY	1042 mm	406 mm (16")	3,2 kg	.30-06 Sprg. (1:10), .308 Win. (1:10)	5	Fixed magazine	No	Adjustable	Yes	360 mm	Laminated wood	Oil	Forged	M14×1	Yes
CZ 557 GREY VALLEY	1042 mm	520 mm (21")	3,2 kg	.30-06 Sprg. (1:10), .308 Win. (1:10)	5	Fixed magazine	No	Adjustable	Yes	360 mm	Laminated wood	Oil	Forged	M14×1	Yes

MODEL	BARREL LENGTH	CALIBER	MAGAZINE CAPACITY	WEIGHT WITHOUT MAGAZINE	FRAME	HEIGHT	THREAD	COMPENSATOR	OVERALL LENGTH WITH FOLDED/ UNFOLDED-EXTENDED STOCK	WIDTH WITH UNFOLDED/FOLDED STOCK
CZ TSR	660mm ± 1 (26")	.308 Win. (1:11)	10	6,3 kg	Aluminium alloy 7075 T6	192 ± 5 mm	M18×1	Muzzle brake	931/1188 ± 10 mm	70/95 ± 5 mm

# SEMI-AUTOMATIC RIFLES & CARBINES

Top-class firearms for sport, hobby shooting and security purposes. CZ assault rifles are among the absolute world leaders – and the same applies to their exclusively semi-automatic versions in the .223 Rem. and 7.62×39 mm calibres.

The current backbone of the range consists of CZ BREN 2Ms rifles, whose excellent parameters and performance make them ideal for modern dynamic sport shooting disciplines, maintaining shooting fitness or just entertainment. However, they also prove successful in the equipment of security agencies and other bodies that cannot use burst-fire guns due to legislation.



# CZ SCORPION

## EVO 3 S1

### SERIES



### Top semi-automatic carbines not only for modern shooting sports

The CZ SCORPION EVO 3 firearm in a truly original design offers users lots of benefits. To highlight just a few – low weight, perfect ergonomics, high accuracy, smooth handling, by far the easiest stripping, extreme reliability and exceptionally fast reloading.



LONG LIFE



DURABILITY

### CZ SCORPION EVO 3 S1 CARBINE

9 mm Luger | 10, 20

Highly accurate semi-automatic carbine in 9x19 calibre. Thanks to its low weight, excellent ergonomics, supreme reliability in all conditions and exceptionally fast reloading, it is an ideal gun for modern sport shooting and hobby shooting. However, due to its parameters and performance, it also meets the highly demanding requirements of the Armed Forces.



### CZ SCORPION EVO 3 S1

9 mm Luger | 10, 20

This is the strictly semi-automatic variant of the modern submachine gun legend, the CZ SCORPION EVO 3 A1. This easy to control gun in simple design is exceptionally reliable, light and accurate, making it an ideal gun for security forces as well as for sport shooting.



- MIL-STD-1913 RAILS FOR THE ATTACHMENT OF ACCESSORIES
- AMBIDEXTROUS SAFETY CATCH
- MAGAZINE MOUTH DESIGNED FOR FAST RELOADING
- EXCEPTIONALLY SIMPLE DESIGN WITH DYNAMIC SLIDE WITH A REMOVABLE TRIGGER HOUSING



Receiver, forend and trigger mechanism housing made of highly durable glass reinforced polymer



Non-reciprocating cocking handle, easy to fit either side



Easy to reach slide stop



Horizontally adjustable pistol grip



Muzzle thread fitted with flash hider as standard



Foldable, telescopic and easy to detach polymer stock

#### TECHNICAL DATA

MODEL	BARREL LENGTH	CALIBER	MAGAZINE CAPACITY	BARREL	WEIGHT WITHOUT MAGAZINE	HEIGHT	OVERALL LENGTH WITH UNFOLDED - EXTENDED STOCK	WIDTH WITH UNFOLDED STOCK
CZ SCORPION EVO 3 S1 CARBINE	412 ± 1 mm (16")	9 mm Luger	10, 20	Cold hammer forged	2,87 ± 0,05 kg	215 ± 5 mm	875-915 ± 10 mm	60/85 ± 5 mm
CZ SCORPION EVO 3 S1	196 ± 1 mm (8")	9 mm Luger	10, 20	Cold hammer forged	2,55 ± 0,05 kg	215 ± 5 mm	615-665 ± 10 mm	60/82 ± 5 mm

SCORPION





# CZ BREN 2 SERIES



## CZ BREN 2 Ms

.223 REM. | 30

This is the strictly semi-automatic variant of the CZ BREN 2 assault rifle, which is a collaboration with other world markets who required civilian versions of our popular assault rifle.



## CZ BREN 2 Ms

7,62x39 | 30

In this semi-automatic rifle, the superb design properties of the CZ BREN 2 system are combined with the impressive ballistic performance of the 7.62x39 calibre. The result is a powerful, accurate and reliable rifle that has no equal rival.



Folding telescopic stock



Detachable forend



Non-reciprocating cocking handle, easy to fit either side



Easy to reach fully ambidextrous or easy to swap controls



Effective three prong flash hider



Pistol grip with storage space and interchangeable backstraps

BREN 2

### Cutting-edge semi-automatic rifles with unrivalled parameters and performance

The CZ BREN 2 weapons system is one of the most sophisticated on the global market. Its advantages include simple design, extreme reliability, high accuracy, low weight, excellent ergonomics and ambidextrous or easy to swap controls.



LONG LIFE



DURABILITY



**ORIGINAL 30-ROUND CZ MAGAZINES MADE OF HIGHLY DURABLE POLYMER WITH WITNESS HOLES ON THE REAR WALL**

**LONG MIL-STD-1913 MOUNTING RAIL**

TECHNICAL DATA

MODEL	BARREL LENGTH	CALIBER	MAGAZINE CAPACITY	BARREL	WEIGHT WITHOUT MAGAZINE	FRAME	OVERALL LENGTH WITH FOLDED/UNFOLDED-EXTENDED STOCK	WIDTH WITH UNFOLDED/FOLDED STOCK
CZ BREN 2 Ms	280 +1 mm (11")	.223 Rem.	30	Cold hammer forged	2,97 ± 0,05 kg	Aluminium alloy	577/762 - 807 ± 10 mm	80 ± 5/104 ± 5 mm
CZ BREN 2 Ms	280 +1 mm (11")	7,62x39 mm	30	Cold hammer forged	2,87 ± 0,05 kg	Aluminium alloy	577/762 - 807 ± 10 mm	80 ± 5/104 ± 5 mm



A0105-0001  
FRONT SUPPORT FOR CZ EVO 3



A0103-0001  
TACTICAL TORCH INFORCE WML,  
400 LM



A0203-0001  
TACTICAL TORCH INFORCE WMLX,  
800 LM



A0101-0010  
COLLIMATOR TRIJICON MRO  
(39 MM, ŠROUB)



A0201-0001  
COLLIMATOR AIMPOINT COMP4,  
MOM, ŠROUB



A0201-0004  
MAGNIFYING MODULE AIMPOINT  
3XMAG



D3660-0080  
SINGLE MAGAZINE POUCH  
30 CZ EVO, BLACK



3662-0800-0715ND  
MAGAZINE CZ MAG 9MM,  
10 ROUND



3662-0770-0725ND  
MAGAZINE CZ MAG 9MM,  
20 ROUND



3662-0780-0735 ND  
MAGAZINE CZ MAG 9MM, 30 ROUND



3722-3500-6501 ND  
MAGAZINE CZ MAG 5,56x45,  
30 ROUND



3722-3500-7301 ND  
MAGAZINE CZ MAG 7,62x39, 30 ROUND



545900004040  
QD POUCH FOR SLING



D2800-0600  
1/2 POINT ASSAULT RIFLE SLING, FDE



D2800-0300  
1/2 POINT ASSAULT RIFLE SLING,  
BLACK



D3660-0081  
DOUBLE MAGAZINE POUCH  
30 CZ EVO, BLACK



D3800-0600  
TACTICAL BAG FOR EVO SUBMACHINE  
GUN, FDE



D3900-0300  
TACTICAL BAG FOR BREN ASSAULT  
RIFLE, BLACK  
D3900-0600  
TACTICAL BAG FOR BREN ASSAULT  
RIFLE, FDE



5133-1000-01ND  
MAGAZINE CZ 455/CZ 457  
.22 LR METAL  
5 ROUND



5133-1000-02ND  
MAGAZINE CZ 455/CZ 457/CZ 512  
.22 LR POLYMER  
5 ROUND



5073-1000-8802ND  
MAGAZINE CZ 455/CZ 457/CZ 512  
WMR/HMR POLYMER  
5 ROUND



5273-1054-6415ND  
MAGAZINE CZ 527 .223 REM.  
3 ROUND



5572-2000-5303ND  
MAGAZINE CZ 557 .243 WIN.  
/308 WIN.  
4 ROUND



5133-1200-01ND  
MAGAZINE CZ 455/CZ 457  
.22 LR METAL  
10 ROUND



5073-1200-8802ND  
MAGAZINE CZ 455/CZ 457/CZ 512  
WMR/HMR POLYMER  
10 ROUND



5133-1200-02ND  
MAGAZINE CZ 455/CZ 457/CZ 512  
.22 LR POLYMER  
10 ROUND



5273-1051-6409ND  
MAGAZINE CZ 527 .223 REM.  
5 ROUND  
5273-1051-0209ND  
MAGAZINE CZ 527 .17/22 HORNET  
5 ROUND  
273-1051-3909ND  
MAGAZINE CZ 527 .204 RUGER  
5 ROUND  
5273-1051-4009ND  
MAGAZINE CZ 527 .222 REM.  
5 ROUND  
5273-1052-43ND  
MAGAZINE CZ 527 7,62x39  
5 ROUND



5572-2000-5302ND  
MAGAZINE CZ 557 .243 WIN.  
/308 WIN.  
10 ROUND



5131-1001-02ND  
SINGLE ROUND INSERT  
CZ 455/CZ 457 .22LR



5123-1225-02ND  
MAGAZINE CZ 455/CZ 457/CZ 512  
.22 LR POLYMER  
25 ROUND



5083-0096-8591ND  
MINISET LONG RANGE PRECISION



5083-0190-83ND  
MINISET LUX



5083-0090-8991ND  
MINISET VARMINT



5083-0090-8594ND  
MINISET VARMINT MATCH



5083-0090-8982ND  
MINISET AMERICAN



5120-0110-01  
CZ WEAPON SLING NYLON  
/RUBBER - GREEN



5120-0110-02  
CZ WEAPON SLING NYLON  
/RUBBER - BROWN



5120-0110-03  
CZ WEAPON SLING NYLON  
/RUBBER - ORANGE



5120-0110-04  
CZ WEAPON SLING TWEED  
/RUBBER - TWEED



5120-0110-11  
CZ WEAPON SLING LEATHER  
/RUBBER - LIGHT



5120-0110-12  
CZ WEAPON SLING LEATHER  
/RUBBER - DARK



5120-0110-09  
CZ WEAPON SLING NYLON  
/RUBBER - BLACK

5120-0110-05  
CZ WEAPON SLING TWEED  
/RUBBER - CAMO



5120-0100  
CZ RIFLE CASE, 118 CM - BLACK



5120-0101  
CZ RIFLE CASE, 118 CM - GREEN



1081-7383  
SLING SWIVEL TRIGATTI



5812-1293-04ND  
SWIVEL CZ 455/CZ 457



5120-0200  
CZ RIFLE TOOL



5500-2990-01ND  
TRIGATTI SWIVEL



1002-4100-05  
ATI SLING LOOP

**ACCESSORIES**



6793-1000-01ND  
MOUNT 1-PIECE CZ 557 DIA. 1"

6793-5000-01ND  
MOUNT 1-PIECE CZ 557 DIA. 30MM



6593-3000-01ND  
MOUNT 2-PIECE CZ 457 DIA. 1" BORDSON

6593-7000-01ND  
MOUNT 2-PIECE CZ 457 DIA. 30 MM BORDSON

6593-2000-01ND  
MOUNT 2-PIECE CZ 527 DIA. 1" BORDSON

6593-6000-01ND  
MOUNT 2-PIECE CZ 527 DIA. 30 MM BORDSON

6593-1000-01ND  
MOUNT 2-PIECE CZ 557 DIA. 1" BORDSON

6593-5000-01ND  
MOUNT 2-PIECE CZ 557 DIA. 30 MM BORDSON



5120-0330-01  
RUBBER RIFLE BOLT KNOP COVER



1070-9010  
MOUNT 1-PIECE BRNO COMBO/ EXPRESS DIA. 1"

1070-9011  
MOUNT 1-PIECE BRNO COMBO/ EXPRESS DIA. 30 MM



5073-1900-01ND  
REAR SIGHT FOR CZ 455/ CZ 457 CAMP RIFLE



1002-5103-01  
BIPOD NA WEAVER - BLACK

1002-5103-02  
BIPOD NA WEAVER - FDE

1002-5103-03  
BIPOD NA WEAVER - GREEN



465570172001  
COMPENSATOR M14x1

465507007011  
COMPENSATOR FOR THREAD 1/2x20 UNF (AMERICAN)

465507007021  
COMPENSATOR FOR THREAD 1/2x20 UNF (VARMINT)



545130060481  
MUZZLE BRAKE M18x1



46557012001  
THREAD CAP M14x1

46557012004  
THREAD CAP M18x1

5080-0060-80ND  
THREAD CAP 1/2x20 UNF (AMERICAN)

5080-0060-90ND  
THREAD CAP 1/2x20 UNF (VARMINT)

1002-5101-01  
CZ 457 TRIGGER GUARD DURAL - BLACK

1002-5101-02  
CZ 457 TRIGGER GUARD DURAL - GOLD



1002-5101-03  
CZ 457 TRIGGER GUARD ALUMINIUM ALLOY - GREEN

1002-5101-04  
CZ 457 TRIGGER GUARD ALUMINIUM ALLOY - RED

1002-5101-05  
CZ 457 TRIGGER GUARD ALUMINIUM ALLOY - BLUE



1002-5102-03  
CZ 457 FRONT SIGHT TUNNEL CARRIER



1002-5102-02  
CZ 457 FRONT SIGHT TUNNEL CARRIER WITH BIATHLON SHUTTER



1002-5102-01  
CZ 457 FRONT SIGHT TUNNEL CARRIER



1080-7010  
WEAVER RAIL CZ 557 LONG ACTION

1080-7011  
WEAVER RAIL CZ 557 SHORT ACTION



1070-9059  
CZ 457 REDUCTION FOR DIOPTR



1070-9058  
WEAVER RAIL CZ 457, ANGLED 25MOA



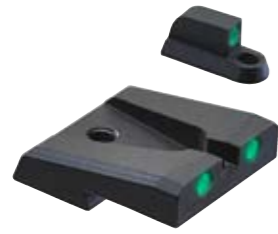
1070-9040  
WEAVER RAIL CZ 527



1070-9057  
WEAVER RAIL CZ 457



1070-9020  
WEAVER RAIL BRNO COMBO/ EXPRESS



0721-0700-03ND  
STEEL TRITIUM SIGHT SET V.2 (5,50 MM)

0721-0700-02ND  
STEEL TRITIUM SIGHT SET V.2 (5,50 MM)

0721-0700-04ND  
STEEL TRITIUM SIGHT SET V.4 (6,00 MM)



0561-0700-02  
SIGHT P-10 TRIT 5,5 MM SET2

0561-0700-03  
SIGHT P-10 TRIT 5,75 MM SET3



1081-0101  
ADJUSTABLE REAR SIGHT FOR SHADOW 2/SP-01 SHADOW



1081-0105  
ADJUSTABLE REAR SIGHT FOR TS ORANGE

1091-1250-01	1091-1251-01	1091-1252-01	1091-1253-01
FRONT SIGHT WITH DOT V1 5,25 MM	FRONT SIGHT WITHOUT DOT V1 5,25 MM	FIBRE OPTIC SIGHT V1 1x5,25 MM	FIBRE OPTIC SIGHT V1 1,5x5,25 MM
1091-1250-02 FRONT SIGHT WITH DOT V2 5,50 MM	1091-1251-02 FRONT SIGHT WITHOUT DOT V2 5,50 MM	1091-1252-02 FIBRE OPTIC SIGHT V2 1x5,50 MM	1091-1253-02 FIBRE OPTIC SIGHT V2 1,5x5,50 MM
1091-1250-03 FRONT SIGHT WITH DOT V2 5,75 MM	1091-1251-03 FRONT SIGHT WITHOUT DOT V2 5,75 MM	1091-1252-03 FIBRE OPTIC SIGHT V2 1x5,75 MM	1091-1253-03 FIBRE OPTIC SIGHT V2 1,5x5,75 MM
1091-1250-04 FRONT SIGHT WITH DOT V2 6,00 MM	1091-1251-04 FRONT SIGHT WITHOUT DOT V2 6,00 MM	1091-1252-04 FIBRE OPTIC SIGHT V2 1x6,00 MM	1091-1253-04 FIBRE OPTIC SIGHT V2 1,5x6,00 MM
1091-1250-05 FRONT SIGHT WITH DOT V2 6,25 MM	1091-1251-05 FRONT SIGHT WITHOUT DOT V2 6,25 MM	1091-1252-05 FIBRE OPTIC SIGHT V2 1x6,25 MM	1091-1253-05 FIBRE OPTIC SIGHT V2 1,5x6,25 MM
1091-1250-06 FRONT SIGHT WITH DOT V2 6,50 MM	1091-1251-06 FRONT SIGHT WITHOUT DOT V2 6,50 MM	1091-1252-06 FIBRE OPTIC SIGHT V2 1x6,50 MM	1091-1253-06 FIBRE OPTIC SIGHT V2 1,5x6,50 MM
1091-1250-07 FRONT SIGHT WITH DOT V2 6,75 MM	1091-1251-07 FRONT SIGHT WITHOUT DOT V2 6,75 MM	1091-1252-07 FIBRE OPTIC SIGHT V2 1x6,75 MM	1091-1253-07 FIBRE OPTIC SIGHT V2 1,5x6,75 MM
1091-1250-08 FRONT SIGHT WITH DOT V2 7,00 MM	1091-1251-08 FRONT SIGHT WITHOUT DOT V2 7,00 MM	1091-1252-08 FIBRE OPTIC SIGHT V2 1x7,00 MM	1091-1253-08 FIBRE OPTIC SIGHT V2 1,5x7,00 MM
1091-1250-09 FRONT SIGHT WITH DOT V2 7,50 MM	1091-1251-09 FRONT SIGHT WITHOUT DOT V2 7,50 MM	1091-1252-09 FIBRE OPTIC SIGHT V2 1x7,50 MM	1091-1253-09 FIBRE OPTIC SIGHT V2 1,5x7,50 MM
1091-1250-10 FRONT SIGHT WITH DOT V2 8,00 MM	1091-1251-10 FRONT SIGHT WITHOUT DOT V2 8,00 MM	1091-1252-10 FIBRE OPTIC SIGHT V2 1x8,00 MM	1091-1253-10 FIBRE OPTIC SIGHT V2 1,5x8,00 MM
1091-1250-11 FRONT SIGHT WITH DOT V2 8,50 MM	1091-1251-11 FRONT SIGHT WITHOUT DOT V2 8,50 MM	1091-1252-11 FIBRE OPTIC SIGHT V2 1x8,50 MM	1091-1253-11 FIBRE OPTIC SIGHT V2 1,5x8,50 MM



1091-1260  
DEFENDER REAR SIGHT WITH DOT 7,3 MM

1091-1263  
DEFENDER REAR SIGHT WITHOUT DOT 7,3 MM

1091-1261  
DEFENDER REAR SIGHT WITH DOT 8,3 MM

1091-1264  
DEFENDER REAR SIGHT WITHOUT DOT 8,3 MM

1091-1262  
DEFENDER REAR SIGHT WITH DOT 10 MM

1091-1265  
DEFENDER REAR SIGHT WITHOUT DOT 10 MM

1091-1266  
TARGET REAR SIGHT WITH DOT 7,3 MM

1091-1267  
TARGET REAR SIGHT WITHOUT DOT 7,3 MM

1091-1268  
TARGET REAR SIGHT WITH DOT 8,3 MM

1091-1269  
TARGET REAR SIGHT WITHOUT DOT 8,3 MM

1091-1270  
TARGET REAR SIGHT WITH DOT 10 MM

1091-1271  
TARGET REAR SIGHT WITHOUT DOT 10 MM



1091-1263  
DEFENDER REAR SIGHT WITHOUT DOT 7,3 MM

1091-1264  
DEFENDER REAR SIGHT WITHOUT DOT 8,3 MM

1091-1265  
DEFENDER REAR SIGHT WITHOUT DOT 10 MM

1091-1266  
TARGET REAR SIGHT WITH DOT 7,3 MM

1091-1267  
TARGET REAR SIGHT WITHOUT DOT 7,3 MM

1091-1268  
TARGET REAR SIGHT WITH DOT 8,3 MM

1091-1269  
TARGET REAR SIGHT WITHOUT DOT 8,3 MM

1091-1270  
TARGET REAR SIGHT WITH DOT 10 MM

1091-1271  
TARGET REAR SIGHT WITHOUT DOT 10 MM



1091-1266  
TARGET REAR SIGHT WITH DOT 7,3 MM

1091-1267  
TARGET REAR SIGHT WITHOUT DOT 7,3 MM

1091-1268  
TARGET REAR SIGHT WITH DOT 8,3 MM

1091-1269  
TARGET REAR SIGHT WITHOUT DOT 8,3 MM

1091-1270  
TARGET REAR SIGHT WITH DOT 10 MM

1091-1271  
TARGET REAR SIGHT WITHOUT DOT 10 MM

HEIGHT OF FRONT SIGHT	FRONT SIGHT WITH DOT *	FRONT SIGHT WITHOUT DOT *	FIBRE OPTIC SIGHT 1 MM **	FIBRE OPTIC SIGHT 1.5 MM **
5,25 mm	1091-1250-01	1091-1251-01	1091-1252-01	1091-1253-01
5,5 mm	1091-1250-02	1091-1251-02	1091-1252-02	1091-1253-02
5,75 mm	1091-1250-03	1091-1251-03	1091-1252-03	1091-1253-03
6 mm	1091-1250-04	1091-1251-04	1091-1252-04	1091-1253-04
6,25 mm	1091-1250-05	1091-1251-05	1091-1252-05	1091-1253-05
6,5 mm	1091-1250-06	1091-1251-06	1091-1252-06	1091-1253-06
6,75 mm	1091-1250-07	1091-1251-07	1091-1252-07	1091-1253-07
7 mm	1091-1250-08	1091-1251-08	1091-1252-08	1091-1253-08
7,5 mm	1091-1250-09	1091-1251-09	1091-1252-09	1091-1253-09
8 mm	1091-1250-10	1091-1251-10	1091-1252-10	1091-1253-10
8,5 mm	1091-1250-11	1091-1251-11	1091-1252-11	1091-1253-11

\* CZ P-07, CZ P-09, CZ 75 COMPACT, CZ 75 D COMPACT, CZ 75, CZ 75 B Ω, CZ 85, CZ 97, CZ SP-01, CZ 75 SP-01 TACTICAL, CZ 75 SP-01 SHADOW, CZ 75 SP-01 PHANTOM, CZ 75 TS, CZ 75 TS CZECHMATE

\*\* CZ 75 COMPACT, CZ 75 D COMPACT, CZ 75, CZ 75 B Ω, CZ 85, CZ 97, CZ SP-01, CZ 75 SP-01 TACTICAL, CZ 75 SP-01 SHADOW, CZ 75 SP-01 PHANTOM, CZ 75 TS, CZ 75 TS CZECHMATE

	HEIGHT OF REAR SIGHT	DEFENDER REAR SIGHT WITH DOT	DEFENDER REAR SIGHT WITHOUT DOT	TARGET REAR SIGHT WITH DOT	TARGET REAR SIGHT WITHOUT DOT	FIBRE OPTIC REAR SIGHT
CZ P-07 / CZ P-09	7,3 mm	1091-1260	1091-1263	1091-1266	1091-1269	1091-1272
CZ 75/85/SP-01	8,3 mm	1091-1261	1091-1264	1091-1267	1091-1270	1091-1273
CZ 75 SP-01 SHADOW	10 mm	1091-1262	1091-1265	1091-1268	1091-1271	1091-1274

	HEIGHT OF SIGHTS	FIBRE OPTIC SIGHTS 1 M	FIBRE OPTIC SIGHTS 1.5 M	TRITIUM SIGHTS
CZ P-07 / CZ P-09	5,5 mm	1091-1282-02	1091-1283-02	0721-0700-02ND
CZ P-07 / CZ P-09	5,75 mm	1091-1282-03	1091-1283-03	0721-0700-03ND
CZ P-07 / CZ P-09	6 mm	1091-1282-04	1091-1283-04	0721-0700-04ND



1010-1309  
MAGAZINE CZ P-07 KADET



1010-1310  
MAGAZINE CZ P-09 KADET



1010-1313  
MAGAZINE CZ SP-01/SHADOW 2 KADET



0422-0710-16ND  
MAGAZINE 19 ROUND CZ 75/SP-01/SHADOW 2; NICKEL



5125-1040  
KYDEX HOLSTER P-09 (R)



5125-1096  
KYDEX HOLSTER CZ P-10 (L) + INFORCE APL



0422-0710-14ND  
MAGAZINE 17 ROUND CZ SP-01/SHADOW 2; NICKEL



0422-0710-15ND  
MAGAZINE 19 ROUND CZ SP-01/SHADOW 2; AFC



0552-0030-06ND  
MAGAZINE P-10 C 9x19 17 ROUND



0552-0030-10ND  
MAGAZINE P-10 C 9x19 15 ROUND

5125-1041  
KYDEX HOLSTER P-09 (L)

5125-1042  
KYDEX HOLSTER P-07 (R)

5125-1043  
KYDEX HOLSTER P-07 (L)

5125-1044  
KYDEX HOLSTER CZ 75 D COMPACT (R)

5125-1045  
KYDEX HOLSTER CZ 75 D COMPACT (L)

5125-1063  
KYDEX HOLSTER CZ 2075 RAMI

5125-1099  
KYDEX HOLSTER CZ-10 C (R)

5125-1098  
KYDEX HOLSTER CZ-10 C (L)

5125-1190-02  
KYDEX. POUZDRO P-10 F (L)

5125-1190-01  
KYDEX. POUZDRO P-10 F (P)

5125-1191-02  
KYDEX. POUZDRO P-10 S (L)

5125-1191-01  
KYDEX. POUZDRO P-10 S (P)

5125-1060  
KYDEX HOLSTER CZ 75 (R)

5125-1062  
KYDEX HOLSTER SP-01 (R)



5125-1046  
MAGAZINE POUCH P-07/P-09/P-10

5125-1048  
MAGAZINE POUCH CZ 75

5125-1097  
KYDEX HOLSTER CZ P-10 (R) + INFORCE APL

5125-1094  
KYDEX HOLSTER CZ P-10 (L) + INFORCE APLC

5125-1095  
KYDEX HOLSTER CZ P-10 (R) + INFORCE APLC

5125-1190-02  
KYDEX HOLSTER CZ P-10 F (L) CS

5125-1190-01  
KYDEX HOLSTER CZ P-10 F (R) CS



0722-0030-10ND  
MAGAZINE P-09/10F 9x19 19 ROUND

0722-0030-05ND  
10 ROUND MAGAZINE FOR CZ P-09 / CZ P-10F



0472-3710-0706ND  
MAGAZINE CZ TS 20/9x19



0472-3710-1617ND  
MAGAZINE CZ TS 17/40 S&W



3660-0022  
WEAPON LIGHT INFORCE APLC



5125-1047  
MAGAZINE POUCH P-07/P-09/P-10 DOUBLE

5125-1049  
MAGAZINE POUCH CZ 75 DOUBLE



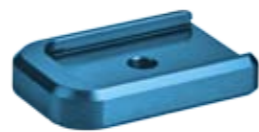
1091-1345-11

ALUMINIUM MAGAZINE BASEPLATE FOR USE WITH FUNNEL CZ SHADOW 2 BLACK



1091-1345-12

ALUMINIUM MAGAZINE BASEPLATE FOR USE WITH FUNNEL CZ SHADOW 2 SILVER



1091-1345-14

ALUMINIUM MAGAZINE BASEPLATE FOR USE WITH FUNNEL CZ SHADOW 2 BLUE



1091-1345-05

ALUMINIUM MAGAZINE BASEPLATE FOR USE WITH FUNNEL CZ SHADOW 2 PURPLE



1091-2280-01

MAGAZINE FUNNEL CZ SHADOW 2 BLACK



1091-2280-12

MAGAZINE FUNNEL CZ SHADOW 2 SILVER



1091-2280-14

MAGAZINE FUNNEL CZ SHADOW 2 BLUE



1091-2280-05

MAGAZINE FUNNEL CZ SHADOW 2 PURPLE



1091-1340-01

ALUMINIUM MAGAZINE BASEPLATE CZ 75 BLACK



1091-1340-02

ALUMINIUM MAGAZINE BASEPLATE CZ 75 SILVER



1091-1340-04

ALUMINIUM MAGAZINE BASEPLATE CZ 75 BLUE



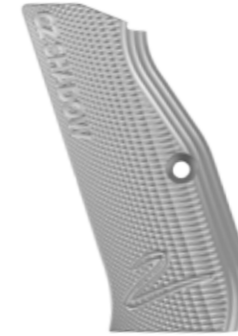
1091-1340-03

ALUMINIUM MAGAZINE BASEPLATE CZ 75 RED



1091-2180-11

GRIP PANELS CZ SHADOW 2 BLACK (HARD ELOX)



1091-2180-12

GRIP PANELS CZ SHADOW 2 SILVER (HARD ELOX)



1091-2180-14

GRIP PANELS CZ SHADOW 2 BLUE (HARD ELOX)



1091-2180-05

GRIP PANELS CZ SHADOW 2 PURPLE (HARD ELOX)



1091-1341-01

ALUMINIUM MAGAZINE BASEPLATE SP-01 BLACK



1091-1341-02

ALUMINIUM MAGAZINE BASEPLATE SP-01 SILVER



1091-1341-04

ALUMINIUM MAGAZINE BASEPLATE SP-01 BLUE



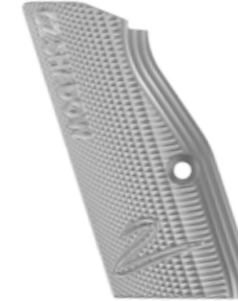
1091-1341-03

ALUMINIUM MAGAZINE BASEPLATE SP-01 RED



1091-2180-21

GRIP PANELS CZ SHADOW 2 SHORT BLACK (HARD ELOX)



1091-2180-22

GRIP PANELS CZ SHADOW 2 SHORT SILVER (HARD ELOX)



1091-2180-24

GRIP PANELS CZ SHADOW 2 SHORT BLUE (HARD ELOX)



1091-2180-25

GRIP PANELS CZ SHADOW 2 SHORT PURPLE



1091-1342-01

ALUMINIUM MAGAZINE BASEPLATE TS BLACK



1091-1342-02

ALUMINIUM MAGAZINE BASEPLATE TS SILVER



1091-1342-04

ALUMINIUM MAGAZINE BASEPLATE TS BLUE



1091-1342-03

ALUMINIUM MAGAZINE BASEPLATE TS RED



1091-1343-01

ALUMINIUM MAGAZINE BASEPLATE CZ 75 +2 BLACK



1091-1343-02

ALUMINIUM MAGAZINE BASEPLATE CZ 75 +2 SILVER



1091-1343-04

ALUMINIUM MAGAZINE BASEPLATE CZ 75 +2 BLUE



1091-1343-03

ALUMINIUM MAGAZINE BASEPLATE CZ 75 +2 RED



0471-0081-1606ND

FLAT SLIDE STOP (ND) SHADOW 2/TS



0423-2500-02ND

EXTENDED SAFETY SHADOW 2 (R)



1091-1337

EXTENDED SAFETY SHADOW 2 (L)



1091-1224

AMBIDEXTROUS FLAT SAFETY SP-01



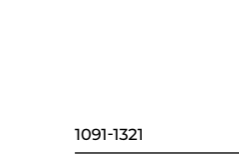
1091-1360

ALUMINIUM MAGAZINE BASEPLATE CZ P-10 ENLARGED



1091-1320

HAMMER SA/DA



1091-1321

HAMMER SA



**ACCESSORIES**



1091-1380-01  
TRIGGER P-10 AL ELOX BLACK



1091-1380-02  
TRIGGER P-10 AL ELOX RED



1091-1380-03  
TRIGGER P-10 AL ELOX BLUE



1091-1380-04  
TRIGGER P-10 AL ELOX GREEN



1091-1410-06  
OPTICS READY PLATE  
CZ P-10 SHIELD RMS



1091-1410-01  
OPTICS READY PLATE CZ P-10  
- TRIJICON RMR



1091-1410-03  
OR PLATE CZ P-10 - DOCTER/VENOM



1091-1420-01  
OPTICS READY PLATE  
SHADOW 2 - TRIJICON RMR



1091-1420-06  
OPTICS READY PLATE  
SHADOW 2 - SHIELD RMS



1091-1420-04  
OR PLATE SHADOW 2 - VENOM/  
DOCTER



1091-1370  
COLLIMATOR SHIELD RMS



3700-7700  
COLLIMATOR TRIJICON RMR  
(+PLATE)



1081-0170  
SOUND SUPPRESSOR HQH GIS PSR  
9/5 (COMPACT) CZ P-10



1081-0171  
SOUND SUPPRESSOR HQH GIS PSR  
9/7 (STANDARD) CZ P-10

**VISIT OUR NEW  
WEBSITE**



**WWW.CZUB.CZ**





**CZ**

*For those  
who know*



CZfirearms



#CZguns

info@czub.cz

www.czub.cz