

# 2019 **PRODUCT CATALOGUE**



**OUR PRODUCTS ARE  
DISTRIBUTED TO MORE THAN  
100 COUNTRIES  
ALL OVER THE WORLD**



**CZ**

**CZ-USA**

*Dan Wesson*  
DAN WESSON FIREARMS

  
SAFARI  
CLASSICS

  
ZBROJOVKA BRNO

**CONTENTS**

	RIMFIRE RIFLES	<b>6</b>
	RIFLES	<b>28</b>
	PISTOLS	<b>52</b>
	SEMI AUTO	<b>70</b>
	ACCESSORIES	<b>76</b>

The manufacturer reserves the right to make any changes it deems necessary to improve its models or to meet any requirements of manufacturing or commercial nature.



## DEAR CUSTOMERS AND SUPPORTERS OF THE CZ BRAND,

***It is a great pleasure and honour  
to present you with the latest catalogue  
from Česká zbrojovka a.s.***

I am sure that you will also be pleased to read it. As for 2019, our company is bringing you many truly outstanding new products and innovations. The most significant ones include a new rimfire rifle series the CZ 457, the striker fired CZ P-10 F pistol, the CZ SHADOW 2 ORANGE, and the civilian versions of our popular service models – the CZ SCORPION EVO 3 S1 CARBINE and the CZ BREN 2 MS.

You, our customers and supporters have played a significant part in the defining of these new products, I would like to therefore say a big thank you on behalf of the entire CZ team for all your feedback. Our continuous communication with end users forms the base of our success and is essential for further improvements, which are of utmost importance to us.

The international CZ Group holding significantly contributes to the success of CZ products on the global market. In addition to Česká zbrojovka a.s., other companies with similar manufacturing and development programmes are gradually incorporated into the holding. The main objective of the CZ Group is to offer a comprehensive portfolio of firearms, tactical equipment, ammunition and other components around the world. This is great news for our customers, who can count on the same quality they have come to expect with CZ products.

We know that purchasing a firearm is a highly responsible decision and a show of great trust. We greatly appreciate your trust and it always drives us on to improve further still. Česká zbrojovka has been one of the most significant global firearm manufacturers for many years. With your support, we want our brand to be among the best in the world. Our aim is to be the leader of our industry.

May you always choose the best.

Ing. Ladislav Britaňák, MBA  
CEO and Chairman of the Board of Česká zbrojovka, a.s.

A handwritten signature in blue ink, appearing to read 'Britaňák', is placed next to the printed name and title of the CEO.



# RIMFIRE RIFLES

The gateway into the fascinating world of guns and shooting, an unparalleled training tool, ever exciting source of fun, effective hunting instrument, the target shooting rifle of choice for masters. These are fields in which rifles for rimfire cartridges traditionally excel and whose requirements CZ rimfire rifles meet 100%. The best evidence are the millions of happy customers and fans from all over the world. Especially for them, 2019 has brought some great news: Česká zbrojovka a.s. has expanded their portfolio with the brand-new CZ 457 model series with many outstanding features!





# CZ 457

## THE NEW PARAGON OF A MODERN RIMFIRE RIFLE

**When it comes to rimfire rifles, Česká zbrojovka a.s. is traditionally one of the world leaders in the manufacture of these firearms. But our company is more than that - in this field we are also the trendsetters. Following in the footsteps of the famous CZ 452 series and its successor, the CZ 455, the new generation of CZ repeating rifles has raised the bar in this class - welcome the CZ 457 family.**

The new CZ 457 family is distinguished by its highly sophisticated modular design. In comparison with existing models and rival products, it brings considerable improvements in all key parameters, whether we are talking about user safety, precision or lifetime.

To a greater or lesser extent, the concept of many of the new CZ rimfire rifles returns to the original reason this category of firearms was created in the first place and why they have enjoyed great popularity for such a long time. Rimfire rifles are often sought by owners of hunting rifles, especially for practice, fun or for teaching the younger generation the basics of shooting and hunting. In this respect, the design of the new CZ 457 family is remarkable. The partial integration of the design and some parts with the successful CZ 557 rifle series has been

a great move, particularly with respect to the fully adjustable trigger mechanism with exceptional properties. It is also worth stressing that this series has retained the successful CZ 455 magazines and barrelled action which means that owners of these weapons have an option of an easy and affordable generational modification. The advantages of the CZ 457 can be divided into three main areas:

### **Safety first**

Today, the prevailing way of operating long firearms is the so-called positive safety which also features on the CZ 457 guns in the form of a lever on the right-hand side of the receiver. The safety is released by moving the lever forward, exposing a red dot on the side of the receiver that indicates that the rifle is ready to fire.

A new element in CZ rimfire rifles is the striker status indicator, which visually and by touch shows the status of the striker mechanism: when the striker is cocked, a small red indicator protrudes from the rear of the bolt.

An additional benefit for safer handling is the separate bolt extractor control on the left side of the receiver. It is therefore not necessary to depress the trigger at all when stripping the gun for basic maintenance.

Last but not least, once again in keeping with the current preferences of most shooters, the CZ 457 guns allow the bolt to be opened and extracted with the safety on.

### **Improved accuracy**

In general, CZ rimfire rifles are highly accurate, however, the truth is that the design legacy of the CZ 452 ZKM limited the options to modify the trigger mechanism parameters. CZ has already managed to solve this problem in several variants of the CZ 455 family. As a result, the company has introduced a new trigger mechanism for the CZ 457 family. It allows the user to adjust the trigger pull weight within a very favourable

range of 8 to 15 N, the trigger travel may be adjusted between 0.5-7 mm. Basically, the shooter has the option to use the gun for ordinary training as well as a target special in its category. One element which is often overlooked but which plays an important role in accuracy is the weight of the striker. In comparison with previous models, the weight of CZ 457 rimfire rifle strikers has been reduced by more than 60%, resulting also in a faster strike and at the same time less shock when fired.

Where stocks are concerned, there has been a great improvement in all long guns from CZ, which has also been reflected in the new rimfire rifles. For the CZ 457 series, Česká zbrojovka has developed a new type of bedding which allows constant tightening of the screws in the barrelled action within the stock. Improvements have also been made with ergonomics, this new series therefore has an extremely comfortable and reliable grip. In the CZ 457 MTR in .22 LR cal. target model, a so-called 'Match' chamber has been used with dimensions on the tightest limit of allowable parameters.

In combination with the other upgrades, this rifle guarantees 15 mm groups at a distance of 50 m!

### **Improved user properties**

In the past few years, CZ has considerably advanced its technologies, such as procedures for the surface treatment of metal parts. The company's new products, including the new CZ 457 series, are thus treated with one of the most durable anti-corrosion surface treatments on the market.

In addition, users will undoubtedly appreciate the improved trigger travel, which has been achieved by redesigning the receiver and the bolt. Another advantage is the notably reduced turning angle of the bolt handle (30° less than previous CZ models). Thanks to this, the gun enables comfortable handling even with a riflescope as well as the ability to fit scopes with large ocular bells with lower ring heights.

While focusing on this generational upgrade, CZ has also taken the opportunity to incorporate upgraded smaller parts, such as the trigger guard, magazine frame, rear part of the bolt, new Weaver rail interface, etc.

The CZ 457 family represents a new paragon of a modern rimfire rifle in the given price category with no equal rival product on the current market.



# CZ 457 ROYAL

.17 HMR (1:9) | 5    .22 LR (1:16) | 5    .22 WMR (1:16) | 5

With this original model, Česká zbrojovka a.s. is returning to the roots of the creation of rimfire rifles. The premium walnut stock has a cheekpiece, the tip is from a fine material.

NEW



The main advantages of the new CZ 457 family include the so-called positive safety on the right side of the receiver, a striker status indicator, a separate control for the bolt removal, an option to open and extract the bolt even when safety is engaged, a new adjustable trigger mechanism, a significantly lighter striker, a new type of bedding, improved ergonomics, exceptionally durable anti-corrosion finish on steel parts and a reduced turning angle of the bolt handle. The long stock for the CZ 457 Royal is made of premium walnut, with a decorative tip. The beautiful grain is accentuated by an oil finish. The design of the stock is based on the shape of traditional stocks popular in the Commonwealth, it has a straight comb, rounded cheekpiece, slim forend and loops for a Safari style sling. The thin-walled hunting style barrel with no iron sights is either 412.5 or 525 mm long.

# CZ 457 JAGUAR

.22 LR (1:16) | 10

A modernized variant of the popular CZ rimfire rifle with the longest barrel on offer (726 mm). The tangent rear sight is adjustable between 25 and 200 m, the stock is decorated with a jaguar motif, such as claw marks, which have been used in place of the traditional checkering. The basic accessories include a 10-round metal magazine.



NEW

# CZ 457 PREMIUM

.17 HMR (1:9) | 5    .22 LR (1:16) | 5    .22 WMR (1:16) | 5

A model that will impress all lovers of hunting rifles of a classic shape. The stock with a cheekpiece and a tip made with decorative material is made from premium walnut. The 630 mm thin-walled barrel has a ½×20 muzzle thread for the attachment of a silencer, a tangent rear sight and a fibre optic front sight.



NEW

# CZ 457 MTR

.17 HMR (1:9) | 5    .22 LR (1:16) | 5

A highly precise model with a special stock made from premium walnut. The thick-walled, cold hammer forged match-grade barrel in .22 LR calibre features a match style chamber. Thanks to this and all other improvements of the new CZ 457 series, this model guarantees just 15 mm groups at a distance of 50 m. This model is also available in .17 HMR calibre.



NEW

MODEL	CALIBER (RATE OF TWIST)	MAGAZINE CAPACITY	STOCK	SURFACE FINISH STOCK	CHEEKPIECE	L.O.P.	SUPPLY SYSTEM	TRIGGER	SIGHTS	BARREL	COMPENSATOR	OVERALL LENGTH (MM)	BARREL LENGTH (MM)	WEIGHT (KG)
CZ 457 ROYAL	.17 HMR (1:9)	5	Walnut +	Oiled	Yes	360	Detachable magazine	Adjustable	-	Forged	No	865 / 977	412,5 / 525	2,7
	.22 LR (1:16)											865 / 977	412,5 / 525	
	.22 WMR (1:16)											977	525	
CZ 457 JAGUAR	.22 LR (1:16)	10	Beech	Lacquered	Yes	360	Detachable magazine	Adjustable	Tangent	Forged	No	1182	726	2,9
CZ 457 PREMIUM	.17 HMR (1:9), .22 LR (1:16), .22 WMR (1:16)	5	Walnut +	Oiled	Yes	360	Detachable magazine	Adjustable	Tangent	Forged	No	1084	630	2,9
CZ 457 MTR	.17 HMR (1:9)	5	Walnut +	Oiled	No	350	Detachable magazine	Adjustable	-	Forged	No	854 / 967	412,5 / 525	3,9
	.22 LR (1:16)											854 / 967	412,5 / 525	



# CZ 457 LUX

.17 HMR (1:9) | 5 .22 LR (1:16) | 5 .22 WMR (1:16) | 5

A rimfire rifle in a classic design of a European hunting rifle. The varnished stock made of premium Turkish walnut has a cheekpiece and laser etched checkering on the grip surfaces. It provides comfortable and precise shooting with the help of iron sights placed on a 630 mm long thin-walled barrel.

NEW



In 2019, the company began a generational upgrade whereby the popular CZ 455 rimfire rifles are being replaced by CZ 457 models with the same features but many improvements of the key parameters and user properties. The new standard of CZ rimfire rifles therefore begins where rival companies end. And this applies to the CZ 457 Lux model as well. Its stock is made from carefully selected Turkish walnut, it has a distinctive pistol grip and a rounded cheekpiece. The unique checkering on the neck of the stock and the forend provides reliable grip even with damp or soiled hands. The shooting comfort is further enhanced by a robust rubber buttplate. In addition to the iron sights consisting of a height and side adjustable tangent rear sight and a height adjustable front sight, there is a 11mm groove on the top of the receiver for the attachment of a riflescope.

# CZ 457 VARMINT

.17 HMR (1:9) | 5 .22 LR (1:16) | 5 .22 WMR (1:16) | 5

The new CZ 457 model series could not be complete without the popular model with a varnished American style stock and a heavy 525 mm long barrel. It is an ideal rifle for precise sport shooting as well as hunting at medium and longer distances. There is a 11mm groove on the top of the receiver for the attachment of a riflescope.

NEW



# CZ 457 AMERICAN

.17 HMR (1:9) | 5 .22 LR (1:16) | 5 .22 WMR (1:16) | 5

A rimfire rifle embodying an example of classic American sport and hunting guns. The varnished American style stock is made from high quality walnut and the checkering on the grip surfaces incorporates a fleur-de-lis motif. The thin-walled, cold hammer forged barrel is 630 mm long and has no iron sights.

NEW



# CZ 457 TRAINING RIFLE

.22 LR (1:16) | 5

The latest of CZ Training Rifle models which are perfect for novice shooters of all ages. In this case, it is all the more true thanks to the benefits of the CZ 457 series that significantly increase user safety, accuracy and lifetime.

NEW



MODEL	CALIBER (RATE OF TWIST)	MAGAZINE CAPACITY	STOCK	SURFACE FINISH STOCK	CHEEKPIECE	L.O.P.	SUPPLY SYSTEM	TRIGGER	SIGHTS	BARREL	COMPENSATOR	OVERALL LENGTH (MM)	BARREL LENGTH (MM)	WEIGHT (KG)
CZ 457 LUX	.17 HMR (1:9), .22 LR (1:16), .22 WMR (1:16)	5	Walnut	Lacquered	Yes	360	Detachable magazine	Adjustable	Tangent	Forged	No	1086	630	2,9
CZ 457 VARMINT	.17 HMR (1:9), .22 LR (1:16), .22 WMR (1:16)	5	Walnut	Lacquered	No	360	Detachable magazine	Adjustable	-	Forged	No	981	525	3,2
CZ 457 AMERICAN	.17 HMR (1:9), .22 LR (1:16), .22 WMR (1:16)	5	Walnut	Lacquered	No	360	Detachable magazine	Adjustable	-	Forged	No	1086	630	2,8
CZ 457 TRAINING RIFLE	.22 LR (1:16)	5	Beech	Lacquered	No	360	Detachable magazine	Adjustable	Tangent	Forged	No	1085	630	2,9

# CZ 455 STAINLESS THUMBHOLE

.17 HMR (1:9) | 5    .22 LR (1:16) | 5

A stock with perfect ergonomics, a stainless steel barrel and receiver, the bolt and small parts treated with an anti-corrosion finish, a 436 mm long cold hammer forged thick-walled barrel. To sum up – if you are looking for a durable, highly accurate and at the same time a compact rimfire rifle for sport or hunting, you have found it.

NEW



Thanks to the great modularity of the CZ 455 barrelled action, it has never been easier to fulfil the wishes and dreams of our customers. This model is the perfect combination of the advantages brought by the Thumbhole type laminate stock and the exceptional anti-corrosion resistance of stainless steel. The final master touch is the thick-walled barrel with a compensator fitted with a PH thread on the muzzle, which is impressively accurate in both of the basic calibres despite being just 436 mm long. Whether you use this rimfire rifle for varmint control or use it for training or condition target shooting, you can count on it performing at its best in any weather. And it looks great too!

## CZ 455 STAINLESS

.17 HMR (1:9) | 5    .22 LR (1:16) | 5

A model with exceptional resistance in adverse conditions. The main parts are made of stainless steel, the bolt and minor parts are treated with an anti-corrosion surface coating, the black and green polymer stock has a soft-touch surface finish.

## CZ 455 STAINLESS LONG

.22 LR (1:16) | 10

A variant of the CZ 455 Stainless for fans of more traditional materials and dimensions. The beech stock is varnished, the 630 mm long cold hammer forged barrel is equipped with iron sights. With an overall length of 1085 mm, the rifle weighs less than 3 kg and has an excellent LOP.

NEW



## CZ 455 STAINLESS WOOD

.17 HMR (1:9) | 10    .22 LR (1:16) | 10    .22 WMR (1:16) | 10

Fitting the corrosion resistant CZ 455 Stainless barrelled action into an oiled walnut stock, whose modern design has been based on the traditional European hunting style, has given birth to a rimfire rifle for all those who place emphasis on aesthetics as well as effectiveness. The rifle is supplied with a 10-round magazine.



MODEL	CALIBER (RATE OF TWIST)	MAGAZINE CAPACITY	STOCK	SURFACE FINISH STOCK	CHEEKPIECE	L.O.P.	SUPPLY SYSTEM	TRIGGER	SIGHTS	BARREL	COMPENSATOR	OVERALL LENGTH (MM)	BARREL LENGTH (MM)	WEIGHT (KG)
CZ 455 STAINLESS THUMBHOLE	.22 LR (1:16), .17 HMR (1:9)	5	Laminated wood	Lacquered	Yes	350	Detachable magazine	Adjustable	No	Forged	Yes	891	436	3,2
CZ 455 STAINLESS	.17 HMR (1:9) .22 LR (1:16) .22 WMR (1:16)	5	Polymer	Soft-touch	No	350	Detachable magazine	Adjustable	No	Forged	Yes	891 / 980 891 / 980 980	436 / 525 436 / 525 525	2,4
CZ 455 STAINLESS LONG	.22 LR (1:16)	10	Beech	Lacquered	No	345	Detachable magazine	Adjustable	Tangent	Forged	No	1085	630	2,9
CZ 455 STAINLESS WOOD	.17 HMR (1:9), .22 LR (1:16), .22 WMR (1:16)	10	Walnut	Oiled	No	350	Detachable magazine	Adjustable	No	Forged	No	980	525	2,8



CZ **455 THUMBHOLE**

.17 HMR (1:9) | 5    .22 LR (1:16) | 5

One of the tried and tested recipes for achieving high accuracy is the “inline” style of the Thumbhole type stock. This model with a heavy barrel is fitted with a stock made of laminated wood in natural colours. In addition to the standard .22 LR calibre, the .17 HMR variant suitable for varmint control at longer distances is also available.



CZ **455 THUMBHOLE** YELLOW

.22 LR (1:16) | 5

A fully-fledged sport special, easily recognizable by its distinct colour of the stock, trigger guard and magazine baseplate. The trigger pull weight in the Flyweight Trigger mechanism is adjustable between 1-5 N and the user may choose to set the trigger up as either a single or two-stage trigger. The heavy barrel is fluted and has a PH muzzle thread.



CZ **455 THUMBHOLE** GREY

.22 LR (1:16) | 5

Even the basic CZ 455 trigger mechanism enables the user to achieve high accuracy. You can see for yourself with this model. It is fitted with an “inline” Thumbhole style stock made of laminated wood in attractive shades of grey, the 525 mm long thick-walled barrel is fluted.



CZ **455 EVOLUTION** GG

.22 LR (1:16) | 5

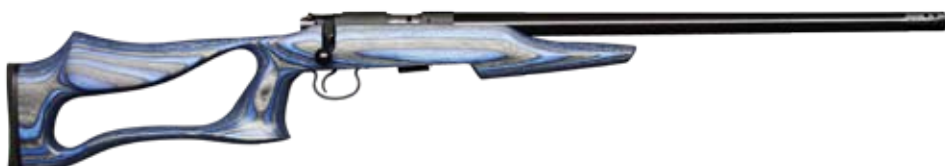
A variant of the CZ 455 Evolution for users who seek a rimfire rifle with the design and effectiveness of a sport special but are not keen on strong colours. This model has a modern stock made of strong laminated wood with an elegant green, brown and grey colour combination.



CZ **455 EVOLUTION**

.22 LR (1:16) | 5

How can one improve the already superb shooting comfort of the CZ 455 rimfire rifles? For example, by using a highly advanced stock made of laminated wood, whose shape and colour design are perfect especially for sport shooting. Thanks to the sophisticated design, this stock is suitable for left-handed users as well.



MODEL	CALIBER (RATE OF TWIST)	MAGAZINE CAPACITY	STOCK	SURFACE FINISH STOCK	CHEEKPIECE	L.O.P.	SUPPLY SYSTEM	TRIGGER	SIGHTS	BARREL	COMPENSATOR	OVERALL LENGTH (MM)	BARREL LENGTH (MM)	WEIGHT (KG)
CZ 455 THUMBHOLE	.17 HMR (1:9), .22 LR (1:16)	5	Laminated wood	Lacquered	Yes	340	Detachable magazine	Adjustable	No	Forged	Yes	975	525	3,4
CZ 455 THUMBHOLE YELLOW	.22 LR (1:16)	5	Laminated wood	Lacquered	Yes	340	Detachable magazine	Adjustable	No	Forged	Yes	975	525	3,4
CZ 455 THUMBHOLE GREY	.22 LR (1:16)	5	Laminated wood	Lacquered	Yes	340	Detachable magazine	Adjustable	No	Forged	No	975	525	3,4
CZ 455 EVOLUTION GG	.22 LR (1:16)	5	Laminated wood	Lacquered	Yes	350	Detachable magazine	Adjustable	No	Forged	Yes	980	525	3,4
CZ 455 EVOLUTION	.22 LR (1:16)	5	Laminated wood	Lacquered	Yes	350	Detachable magazine	Adjustable	No	Forged	Yes	980	525	3,4

CZ 455 LUX

.22 LR (1:16) | 10

This model has a varnished stock made of high-quality Turkish walnut, the checkering on the pistol grip guarantees reliable handling. The rear sight is height and side adjustable. This gun is suitable for training as well as hunting.



CZ 455 SCOUT

.22 LR (1:16) | 1

A compact and affordable model with dimensions optimized for young shooters. They will appreciate the shorter stock and tighter radius pistol grip enabling an easier reach of the trigger. As standard, this model is supplied with a single-shot adapter to learn the basic shooting skills safely.



CZ 455 CAMP RIFLE

.22 LR (1:16) | 1

A model suitable for basic training as well as for experienced shooters. The varnished beech stock is adjustable in length with the help of two 12 mm plastic inserts for the rubber buttplate. The iron sights consist of a height-adjustable front sight and fully adjustable dioptre rear sight on the receiver dovetail. The body of the bolt has been treated with an anti-abrasion and anti-corrosion coating.



CZ 455 STANDARD

.22 LR (1:16) | 5 .22 WMR (1:16) | 5

The basic model of the CZ 455 with iron sights consisting of an elevation and windage adjustable rear sight and an elevation adjustable front sight. The beech stock without a cheekpiece is varnished, offering a durable surface finish. In both calibres, the gun is supplied with a 5-round plastic magazine.



CZ 455 SUPERMATCH

.22 LR (1:16) | 10

A model with a thin-walled barrel in a standard length of 525 mm for high precision shooting at long distances. The 12-groove bore provides better stability of the bullet. As standard, the model is supplied with a 10-round metal magazine.



CZ 455 ULTRAMATCH

.22 LR (1:16) | 10

A special with a varnished beech stock in a classic design for high precision shooting at long distances. The 630 mm long barrel has 12 grooves in the barrel bore, the tangent rear sight is adjustable for up to 200 m. A 10-round metal magazine is included as a standard accessory.



MODEL	CALIBER (RATE OF TWIST)	MAGAZINE CAPACITY	STOCK	SURFACE FINISH STOCK	CHEEKPIECE	L.O.P.	SUPPLY SYSTEM	TRIGGER	SIGHTS	BARREL	COMPENSATOR	OVERALL LENGTH (MM)	BARREL LENGTH (MM)	WEIGHT (KG)
CZ 455 LUX	.22 LR (1:16)	10	Walnut	Lacquered	No	350	Detachable magazine	Adjustable	Adjustable	Forged	No	980	525	2,8
CZ 455 SCOUT	.22 LR (1:16)	1	Beech	Lacquered	No	305	Detachable magazine	Adjustable	Adjustable	Forged	No	846	436	2,3
CZ 455 CAMP RIFLE	.22 LR (1:16)	1	Beech	Lacquered	No	324-350	Detachable magazine	Adjustable	Dioptre	Forged	No	965 / 991	525	2,8
CZ 455 STANDARD	.22 LR (1:16), .22 WMR (1:16)	5	Beech	Lacquered	No	350	Detachable magazine	Adjustable	Adjustable	Forged	No	980	525	2,8
CZ 455 SUPERMATCH	.22 LR (1:16)	10	Beech	Lacquered	No	350	Detachable magazine	Adjustable	Adjustable	Forged	No	1085	630	2,9
CZ 455 ULTRAMATCH	.22 LR (1:16)	10	Beech	Lacquered	No	345	Detachable magazine	Adjustable	Tangent	Forged	No	1085	630	2,9



# CZ 455 MINI SNIPER

.22 LR (1:16) | 10

A model specially designed for the popular rimfire rifle event “mini sniper”. It has a tactical stock with a soft-touch finish, a Weaver mounting rail and a thick-walled barrel with a compensator.

NEW



## CZ 455 NIGHT SKY

.22 LR (1:16) | 5

A typical feature of this model is the polymer stock with a soft-touch finish, whose colour design resembles a night sky full of stars. The stainless steel trigger blade provides a beautiful contrast to the dominant black colour. There is a Weaver rail on the receiver and an enlarged compensator on the muzzle of the thin-walled barrel.

## CZ 455 SYNTHETIC

.17 HMR (1:9) | 5 .22 LR (1:16) | 5 .22 WMR (1:16) | 5

Thanks to the polymer American style stock with a soft-touch finish, this model is exceptionally light and offers superb user comfort properties in adverse climatic conditions. The barrel without iron sights has a compensator fitted on the muzzle. This model is supplied with thin-walled barrels 525 and 436 mm long (for .22 LR calibre, only the 525 mm barrel is available).

## CZ 455 VARMINT SYNTHETIC

.22 LR (1:16) | 5

A variant of the CZ 455 model with a thick-walled 525 mm long barrel and a compensator on a PH muzzle thread. The ergonomic symmetrical stock made of black polymer has a soft-touch surface finish, providing a comfortable and reliable grip in all weather conditions.

This small sniper has opened a new chapter in the development of highly accurate CZ 455 models. The tactical beech stock is ideally shaped for shooting in a prone position with a support, its surface is protected by a black soft-touch finish and the gripping surfaces are checkered. The bottom of the enlarged forend allows for the attachment of a bipod. For quick and reliable control, the bolt handle is fitted with a robust rubber ball, and there is a Weaver mounting rail on top of the receiver. The 525 mm long thick-walled, cold hammer forged barrel has a compensator fitted on a PH muzzle thread. The basic accessories include a 10-round magazine and a case.

MODEL	CALIBER (RATE OF TWIST)	MAGAZINE CAPACITY	STOCK	SURFACE FINISH STOCK	CHEEKPIECE	L.O.P.	SUPPLY SYSTEM	TRIGGER	SIGHTS	BARREL	COMPENSATOR	OVERALL LENGTH (MM)	BARREL LENGTH (MM)	WEIGHT (KG)
CZ 455 MINI SNIPER	.22 LR (1:16)	10	Beech	Soft-touch	No	370	Detachable magazine	Adjustable	No	Forged	Yes	1000	525	3,5
CZ 455 NIGHT SKY	.22 LR (1:16)	5	Polymer	Soft-touch	No	350	Detachable magazine	Adjustable	No	Forged	Yes	980	525	2,4
CZ 455 SYNTHETIC	.17 HMR (1:9)	5	Polymer	Soft-touch	No	350	Detachable magazine	Adjustable	No	Forged	Yes	891 / 980	436 / 525	2,4
	.22 LR (1:16) .22 WMR (1:16)													
CZ 455 VARMINT SYNTHETIC	.22 LR (1:16)	5	Polymer	Soft-touch	No	350	Detachable magazine	Adjustable	No	Forged	Yes	980	525	2,8

# CZ 512 TACTICAL

.22 LR (1:16) | 25 .22 WMR (1:16) | 25

A popular semi-automatic rimfire rifle in an attractive tactical design. This model has an ergonomic pistol grip, a plastic stock adjustable in length, a forend made from aluminium alloy and a 530 mm long Picatinny rail for the attachment of accessories. In the .22 LR calibre, a 25-round magazine is supplied as standard.



## CZ 512

.22 LR (1:16) | 5 .22 WMR (1:16) | 5

A modern semi-automatic rimfire rifle which is characterized by exceptional reliability, accuracy and easy control. Thanks to the excellent design, it is suitable both for sport shooting and hunting, as demonstrated by the selection of calibres on offer. In addition to the basic 5-round magazine, 10-round magazines are available as a further purchase. For the .22 LR calibre, a 25-round magazine is also available.



MODEL	CALIBER (RATE OF TWIST)	MAGAZINE CAPACITY	STOCK	SURFACE FINISH STOCK	CHEEKPIECE	L.O.P.	SUPPLY SYSTEM	TRIGGER	SIGHTS	BARREL	COMPENSATOR	OVERALL LENGTH (MM)	BARREL LENGTH (MM)	WEIGHT (KG)
CZ 512 TACTICAL	.22 LR (1:16), .22 WMR (1:16)	25	Polymer	-	Yes	305-390	Detachable magazine	Adjustable	-	Forged	Yes	839-920	419	2,8
CZ 512	.22 LR (1:16), .22 WMR (1:16)	5	Beech	Lacquered	No	350	Detachable magazine	Adjustable	Adjustable	Forged	No	1000	525	2,7



# CZ 200 T

.177 | 1

A popular compressed air gun with a two-piece fully adjustable beechwood stock. There is a rail on the forend for the attachment of accessories (bipod, sling, etc.). High accuracy is achieved by the cold hammer forged barrel from our own production, with a muzzle choke.



# CZ 200 S HUNTER

.177 | 1 .22 | 1

The basic model of the CZ 200 S Hunter is produced in .177 or .22 calibres and except for sport purposes, it may also be used for varmint control (subject to legislation) as its muzzle energy can be set up to 16 J. This model is fitted with a single piece stock with a cheekpiece and a pressure cylinder with the capacity increased by 30%.



# CZ 200 S GREEN

.177 | 1

A popular air rifle with a one piece fully adjustable beechwood stock in an attractive green stain and “diabolo” style checkering on the pistol grip. The forend has a rail for the attachment of accessories (bipod, sling, etc.). High accuracy is achieved by hammer forged barrels from our own production with a muzzle choke.



MODEL	CALIBER	STOCK	SURFACE FINISH STOCK	CHEEKPIECE	TRIGGER	BARREL	OVERALL LENGTH (MM)	BARREL LENGTH (MM)	WEIGHT (KG)
CZ 200 T	4,5 mm	Beech	Lacquered	Yes	Adjustable	Forged	872-928	485	2,9
CZ 200 S HUNTER	4,5 mm	Beech	Lacquered	No	Adjustable	Forged	907	485	2,9
CZ 200 S GREEN	4,5 mm	Beech	Lacquered	Yes	Adjustable	Forged	872-928	485	2,9

rimfire rifles														
MODEL	CALIBER (RATE OF TWIST)	MAGAZINE CAPACITY	STOCK	SURFACE FINISH STOCK	CHEEKPIECE	L.O.P.	SUPPLY SYSTEM	TRIGGER	SIGHTS	BARREL	COMPENSATOR	OVERALL LENGTH (MM)	BARREL LENGTH (MM)	WEIGHT (KG)
CZ 457 ROYAL	.17 HMR (1:9)	5	Walnut +	Oiled	Yes	360	Detachable magazine	Adjustable	–	Forged	No	865 / 977	412,5 / 525	2,7
	.22 LR (1:16)											865 / 977	412,5 / 525	
	.22 WMR (1:16)											977	525	
CZ 457 JAGUAR	.22 LR (1:16)	10	Beech	Lacquered	Yes	360	Detachable magazine	Adjustable	Tangent	Forged	No	1182	726	2,9
CZ 457 PREMIUM	.17 HMR (1:9), .22 LR (1:16), .22 WMR (1:16)	5	Walnut +	Oiled	Yes	360	Detachable magazine	Adjustable	Tangent	Forged	No	1084	630	2,9
CZ 457 MTR	.17 HMR (1:9)	5	Walnut +	Oiled	No	350	Detachable magazine	Adjustable	–	Forged	No	854 / 967	412,5 / 525	3,9
	.22 LR (1:16)											854 / 967	412,5 / 525	
CZ 457 LUX	.17 HMR (1:9), .22 LR (1:16), .22 WMR (1:16)	5	Walnut	Lacquered	Yes	360	Detachable magazine	Adjustable	Tangent	Forged	No	1086	630	2,9
CZ 457 VARMINT	.17 HMR (1:9), .22 LR (1:16), .22 WMR (1:16)	5	Walnut	Lacquered	No	360	Detachable magazine	Adjustable	–	Forged	No	981	525	3,2
CZ 457 AMERICAN	.17 HMR (1:9), .22 LR (1:16), .22 WMR (1:16)	5	Walnut	Lacquered	No	360	Detachable magazine	Adjustable	–	Forged	No	1086	630	2,8
CZ 457 TRAINING RIFLE	.22 LR (1:16)	5	Beech	Lacquered	No	360	Detachable magazine	Adjustable	Tangent	Forged	No	1085	630	2,9
CZ 455 STAINLESS THUMBHOLE	.22 LR (1:16), .17 HMR (1:9)	5	Laminated wood	Lacquered	Yes	350	Detachable magazine	Adjustable	No	Forged	Yes	891	436	3,2
CZ 455 STAINLESS	.17 HMR (1:9)	5	Polymer	Soft-touch	No	350	Detachable magazine	Adjustable	No	Forged	Yes	891 / 980	436 / 525	2,4
	.22 LR (1:16)											891 / 980	436 / 525	
	.22 WMR (1:16)											980	525	
CZ 455 STAINLESS LONG	.22 LR (1:16)	10	Beech	Lacquered	No	345	Detachable magazine	Adjustable	Tangent	Forged	No	1085	630	2,9
CZ 455 STAINLESS WOOD	.17 HMR (1:9), .22 LR (1:16), .22 WMR (1:16)	10	Walnut	Oiled	No	350	Detachable magazine	Adjustable	No	Forged	No	980	525	2,8
CZ 455 THUMBHOLE	.17 HMR (1:9), .22 LR (1:16)	5	Laminated wood	Lacquered	Yes	340	Detachable magazine	Adjustable	No	Forged	Yes	975	525	3,4
CZ 455 THUMBHOLE YELLOW	.22 LR (1:16)	5	Laminated wood	Lacquered	Yes	340	Detachable magazine	Adjustable	No	Forged	Yes	975	525	3,4
CZ 455 THUMBHOLE GREY	.22 LR (1:16)	5	Laminated wood	Lacquered	Yes	340	Detachable magazine	Adjustable	No	Forged	No	975	525	3,4
CZ 455 EVOLUTION GG	.22 LR (1:16)	5	Laminated wood	Lacquered	Yes	350	Detachable magazine	Adjustable	No	Forged	Yes	980	525	3,4
CZ 455 EVOLUTION	.22 LR (1:16)	5	Laminated wood	Lacquered	Yes	350	Detachable magazine	Adjustable	No	Forged	Yes	980	525	3,4
CZ 455 LUX	.22 LR (1:16)	10	Walnut	Lacquered	No	350	Detachable magazine	Adjustable	Adjustable	Forged	No	980	525	2,8
CZ 455 SCOUT	.22 LR (1:16)	1	Beech	Lacquered	No	305	Detachable magazine	Adjustable	Adjustable	Forged	No	846	436	2,3
CZ 455 CAMP RIFLE	.22 LR (1:16)	1	Beech	Lacquered	No	324–350	Detachable magazine	Adjustable	Dioptre	Forged	No	965 / 991	525	2,8
CZ 455 STANDARD	.22 LR (1:16), .22 WMR (1:16)	5	Beech	Lacquered	No	350	Detachable magazine	Adjustable	Adjustable	Forged	No	980	525	2,8
CZ 455 SUPERMATCH	.22 LR (1:16)	10	Beech	Lacquered	No	350	Detachable magazine	Adjustable	Adjustable	Forged	No	1085	630	2,9
CZ 455 ULTRAMATCH	.22 LR (1:16)	10	Beech	Lacquered	No	345	Detachable magazine	Adjustable	Tangent	Forged	No	1085	630	2,9
CZ 455 MINI SNIPER	.22 LR (1:16)	10	Beech	Soft-touch	No	370	Detachable magazine	Adjustable	No	Forged	Yes	1000	525	3,5
CZ 455 NIGHT SKY	.22 LR (1:16)	5	Polymer	Soft-touch	No	350	Detachable magazine	Adjustable	No	Forged	Yes	980	525	2,4
CZ 455 SYNTHETIC	.17 HMR (1:9)	5	Polymer	Soft-touch	No	350	Detachable magazine	Adjustable	No	Forged	Yes	891 / 980	436 / 525	2,4
	.22 LR (1:16)													
	.22 WMR (1:16)													
CZ 455 VARMINT SYNTHETIC	.22 LR (16")	5	Polymer	Soft-touch	No	350	Detachable magazine	Adjustable	No	Forged	Yes	980	525	2,8
CZ 512 TACTICAL	.22 LR (1:16), .22 WMR (1:16)	25	Polymer	–	Yes	305–390	Detachable magazine	Adjustable	–	Forged	Yes	839–920	419	2,8
CZ 512	.22 LR (1:16), .22 WMR (1:16)	5	Beech	Lacquered	No	350	Detachable magazine	Adjustable	Adjustable	Forged	No	1000	525	2,7

air guns														
MODEL	CALIBER		STOCK	SURFACE FINISH STOCK	CHEEKPIECE			TRIGGER		BARREL		OVERALL LENGTH (MM)	BARREL LENGTH (MM)	WEIGHT (KG)
CZ 200 T	4,5 mm		Beech	Lacquered	Yes			Adjustable		Forged		872-928	485	2,9
CZ 200 S HUNTER	4,5 mm		Beech	Lacquered	No			Adjustable		Forged		907	485	2,9
CZ 200 S GREEN	4,5 mm		Beech	Lacquered	Yes			Adjustable		Forged		872-928	485	2,9



# RIFLES

For over 50 years, rifles from Česká zbrojovka a.s. have held a prominent place on the global market for long firearms for hunting and sport. Therefore, CZ rifles are synonymous with design originality, reliability, accuracy and first-rate quality, which applies to all other CZ brand products. A clear evidence of this are the hundreds of thousands of happy customers whose numbers increase every year.

Our rifle portfolio has for a long time consisted of three categories of rifles: Lite, Medium and Magnum. All boast exceptionally precise cold hammer forged barrels, their receivers are made from one piece of high-quality steel on the most advanced CNC machines, and they are all equipped with elegant and ergonomic stocks made from traditional as well as modern materials. In addition, we also offer rifles and rifle/shotguns with break action barrels by the legendary Zbrojovka Brno brand.

Thanks to constantly communicating with the end users, we are able to continuously modify and implement some innovations even where completely new products are concerned, in order to meet the current demands.





# CZ 527 CARBINE SYNTHETIC

.223 Rem. | 5 7,62×39 | 5

Our designers and product managers take an active part in hunting and are very well aware of which gun is suitable for the wilderness. Thanks to this expertise, a new model was born, combining the advantages of the CZ 527 CARBINE compact light rifle and the benefits of a soft-touch surface treatment.



Simple, compact, light, quick, accurate, powerful, reliable, durable – all of these properties should be found in a “working” rifle for everyday use in the wilderness, a rifle with which the user should be able to obtain food as well to defend themselves against predators. The CZ 527 CARBINE SYNTHETIC model offers you just that. Here, Česká zbrojovka has successfully managed to combine their legendary CZ 527 “mini Mauser” in the powerful .223 Rem. or 7.62×39 calibres with an elegant polymer stock in a comfortable soft-touch finish. The basic features include a single set trigger and iron sights, that is a windage-adjustable rear sight and a height-adjustable front sight accentuated by red fibre optics. The resulting model is a rifle that will cope perfectly even in the most adverse conditions.

## CZ 527 CARBINE

.223 Rem. | 5 7,62×39 | 5

High power in a compact size. This all-time favourite variant of the CZ 527 rifle boasts a 470 mm long barrel with iron sights (a side-adjustable rear sight and a height-adjustable front sight accentuated by red fibre optics) and has an oiled walnut stock.

## CZ 527 LUX

.22 Hornet | 5 .223 Rem. | 5

An elegant model chambered in two classic calibres of the CZ 527 platform. This model is distinguished by an oiled premium Turkish walnut stock in traditional European style design with a cheekpiece. The 600 mm cold hammer forged barrel is equipped with iron sights.

## CZ 527 LUX LH

.223 Rem. | 5

This model with all the superb properties of the CZ 527 rifles is perfect for left-handed shooters. It is a mirror version of one of the most popular variants of this series, with a European style walnut stock and iron sights.

MODEL	CALIBER (RATE OF TWIST)	MAGAZINE CAPACITY	STOCK	SURFACE FINISH STOCK	CHEEKPIECE	L.O.P.	SUPPLY SYSTEM	TRIGGER	SIGHTS	BARREL	THREAD	COMPENSATOR	OVERALL LENGTH (MM)	BARREL LENGTH (MM)	WEIGHT (KG)
CZ 527 CARBINE SYNTHETIC	.223 Rem. (1:9), 7,62×39 (1:9,4)	5	Polymer	Soft-touch	No	355	Detachable magazine	SST	Yes	Forged	No	No	950	470	2,7
CZ 527 CARBINE	.223 Rem. (1:9), 7,62×39 (1:9,4)	5	Walnut	Oiled	No	355	Detachable magazine	SST	Yes	Forged	No	No	950	470	2,7
CZ 527 LUX	.22 Hornet (1:16), .223 Rem. (1:9)	5	Walnut	Oiled	Yes	360	Detachable magazine	SST	Yes	Forged	No	No	1077	600	2,8
CZ 527 LUX LH	.223 Rem. (1:9)	5	Walnut	Oiled	Yes	360	Detachable magazine	SST	Yes	Forged	Ne	Ne	1077	600	2,8



# CZ 527 NIGHT SKY

.223 Rem. | 5

A rifle whose stock resembles a night sky full of stars. The uniqueness of this model is further complemented by other elements, such as a silver coloured trigger and a muzzle compensator fitted on a cold hammer forged barrel without iron sights.



## CZ 527 AMERICAN

.22 Hornet | 5    .223 Rem. | 5    6,5 Grendel | 5    7,62×39 | 5

A popular model with a walnut stock in a classic American style and a cold hammer forged barrel without iron sights. A single set trigger is fitted as standard, and the barrel features a recessed target crown.

## CZ 527 VARMINT

.223 Rem. | 5

A model with a heavy, 650 mm long cold hammer forged barrel, intended for highly precise shooting at middle and long distances. At the end of the barrel, there is a M15x1 muzzle thread. Czech elite shooters have garnered a lot of success with the sport variants of this rifle in Combined game shooting (FITASC).

## CZ 527 EXCLUSIVE EBONY EDITION

.223 Rem. | 3

For admirers of truly exclusive guns we offer this magnificent model with a glossy blued helical barrel, a jewelled bolt and an oiled walnut stock with ebony details. A real beauty – and a very effective hunting tool as well!

Hunt at night with a piece of a starry sky in your hand... You can make this dream come true with our exclusive series, the CZ Night Sky. The 527 version in this series is chambered in .223 Rem., it has a flush-fitting 3-round metal magazine and a polymer stock. The stock's surface finish creates the desired effect – a black soft-touch coating offers a comfortable and reliable grip and is adorned with white dots which resemble stars at night. The silver coloured trigger blade makes a nice contrast to the stock. The 555 mm long thin-walled barrel with a M14x1 muzzle thread is fitted with a compensator, a standard feature for this series.

MODEL	CALIBER (RATE OF TWIST)	MAGAZINE CAPACITY	STOCK	SURFACE FINISH STOCK	CHEEKPIECE	L.O.P.	SUPPLY SYSTEM	TRIGGER	SIGHTS	BARREL	THREAD	COMPENSATOR	OVERALL LENGTH (MM)	BARREL LENGTH (MM)	WEIGHT (KG)
CZ 527 NIGHT SKY	.223 Rem. (1:9)	3	Polymer	Soft-touch	No	355	Detachable magazine	SST	No	Forged	M14×1	Yes	1025	555	2,6
CZ 527 AMERICAN	.22 Hornet (1:16), .223 Rem. (1:9), 6,5 Grendel (1:8), 7,62×39 (1:9,4)	5	Walnut	Lacquered	No	355	Detachable magazine	SST	No	Forged	No	No	1025	555	2,7
CZ 527 VARMINT	.223 Rem. (1:9)	5	Walnut	Lacquered	No	355	Detachable magazine	SST	No	Forged	M15×1	No	1085	650	3,3
CZ 527 EXCLUSIVE EBONY EDITION	.223 Rem. (1:9)	3	Walnut / Ebony	Oiled	Yes	355	Detachable magazine	SST	Yes	Forged	No	No	1025	555	2,7

# CZ 527 THUMBHOLE

.17 Hornet | 5    .223 Rem. | 5

A popular 21st century mini Mauser whose Thumbhole style inline stock brings a new level of shooting experience. Thanks to the powerful cartridges, it is the perfect gun for precise shooting at longer distances.



## CZ 527 VARMINT LAMINATED

.223 Rem. | 5

This model in a popular calibre has a modern American style stock made of grey, laminated varnished wood. The thick-walled cold hammer forged barrel without iron sights is 610 mm long and has a M15×1 muzzle thread.



## CZ 527 VARMINT MTR

.223 Rem. | 5    6,5 Grendel | 5

A model that offers everything a shooter may require of a highly precise and efficient modern rifle from the Lite category. The trigger has an adjustable trigger pull weight and trigger travel. The thick-walled cold hammer forged barrel is 650 mm long and has a M18×1 thread on a target pattern muzzle for the attachment of accessories.



The barrel fires while the stock hits. You can see how true this old Czech saying is with this CZ 527 model fitted with a modern Thumbhole style stock made of laminated varnished wood in natural colours, whose ergonomics have been optimised for right-handed shooters. But one cannot rely on the stock only. The heavy, 610 mm long, cold hammer forged barrel with a M15×1 muzzle thread guarantees constantly high accuracy. And, of course, there is the exceptionally efficient single set trigger.

MODEL	CALIBER (RATE OF TWIST)	MAGAZINE CAPACITY	STOCK	SURFACE FINISH STOCK	CHEEKPIECE	L.O.P.	SUPPLY SYSTEM	TRIGGER	SIGHTS	BARREL	THREAD	COMPENSATOR	OVERALL LENGTH (MM)	BARREL LENGTH (MM)	WEIGHT (KG)
CZ 527 THUMBHOLE	.17 Hornet (1:9), .223 Rem. (1:9)	5	Laminated wood	Lacquered	No	355	Detachable magazine	SST	No	Forged	M15×1	No	1062	610	3,6
CZ 527 VARMINT LAMINATED	.223 Rem. (1:9)	5	Laminated wood	Lacquered	No	355	Detachable magazine	SST	No	Forged	M15×1	No	1062	610	3,6
CZ 527 VARMINT MTR	.223 Rem. (1:9), 6,5 Grendel (1:8)	5	Walnut	Oiled	No	355	Detachable magazine	Adjustable	No	Forged	M18×1	No	1130	650	4



# CZ 557 LUX II.

7×64 | 5    .30-06 Sprg. | 5    .308 Win. | 4    8×57 IS | 5

This variant of the superb CZ 557 LUX rifle is a perfect choice for customers who prefer the more traditional hunting rifles in European style. Their needs have been taken into account when designing the barrel, trigger and the safety.



Tradition – if this is the word that comes into your mind when you see this model, then our mission has been accomplished. Thanks to regular contact with our customers, we have found out that with the introduction of the modern CZ 557 series, many users have had to make changes in their lifelong habits. The solution has come in this variant which allows even the more conservative users to take advantage of the benefits that the CZ 557 barrelled action brings. The distinctive stock with a cheekpiece is made of high-quality walnut in an oiled finish; the 610 mm long cold hammer forged barrel has easy to read iron sights. The rifle is equipped with a single set trigger and a safety that locks the bolt even when engaged. The CZ 557 LUX II. is available with a fixed magazine as well as a detachable magazine.

## CZ 557 LUX

7×64 | 5    .30-06 Sprg. | 5    6,5×55 | 5    8×57 IS | 5

The flagship of the Medium category. This model is made in four of the most popular calibres, its cold hammer forged barrel with iron sights is 520 mm long. The luxurious stock made of high-quality oiled walnut has a cheekpiece and an ergonomic pistol grip.

## CZ 577 LUX LH

8×57 IS | 5    .30-06 Sprg. | 5    .308 Win. | 4

A model for shooters with a dominant left hand, in other words, a mirror version of the CZ 557 LUX with a 520 mm long cold hammer forged barrel equipped with adjustable iron sights. This model is produced in the two most popular calibres and is available with a fixed magazine as well as a detachable magazine.

## CZ 557 LUX SA

.243 Win. | 4    .308 Win. | 4

The SA in this model with a box magazine stands for Short Action. It is the obvious choice for all shooters who apart from accuracy and reliability also seek fast reloading. Thanks to the shorter receiver and bolt, the speed of reloading in this variant really is fast.



MODEL	CALIBER (RATE OF TWIST)	MAGAZINE CAPACITY	STOCK	SURFACE FINISH STOCK	CHEEKPIECE	L.O.P.	SUPPLY SYSTEM	TRIGGER	SIGHTS	BARREL	THREAD	COMPENSATOR	OVERALL LENGTH (MM)	BARREL LENGTH (MM)	WEIGHT (KG)
CZ 557 LUX II.	.30-06 Sprg. (1:10), 7×64 (1:8,6), 8×57 IS (1:9,4) .308 Win. (1:10)	5, 5, 5 4	Walnut	Oiled	Yes	370	Fixed magazine Detachable magazine	SST	Yes	Forged	No	No	1160	610	3,4
CZ 557 LUX	7×64 (1:8,6), .30-06 Sprg. (1:10), 6,5×55 (1:8,6), 8×57 IS (1:9,4)	5	Walnut	Oiled	Yes	370	Fixed magazine	Adjustable	Yes	Forged	No	No	1070	520	3,3
CZ 557 LUX LH	8×57 IS (1:9,4), .30-06 Sprg. (1:10) .308 Win. (1:10)	5, 5 4	Walnut	Oiled	Yes	370	Fixed magazine Detachable magazine	Adjustable	Yes	Forged	No	No	1040 1070	520	3,3
CZ 557 LUX SA	.243 Win. (1:10), .308 Win. (1:10)	4	Walnut	Oiled	Yes	370	Detachable magazine	Adjustable	Yes	Forged	No	No	1040	520	3,1

# CZ 557 NIGHT SKY

.30-06 Sprg. | 5    .308 Win. | 4

The unique NIGHT SKY edition of course includes CZ rifles in the Medium category. The plural is used on purpose. To make sure users have a choice, two version have been selected - a model with a fixed magazine as well as a detachable magazine.



The CZ 557 NIGHT SKY models also have the distinctive highly durable polymer stock in a modern design, this time one that has been used on the CZ 557 SYNTHETIC. To improve the user comfort, the stock has a soft-touch finish with a colour effect that resembles a night sky full of stars. The version with a detachable magazine is available in .308 Win. calibre and the fixed magazine version in .30-06 Sprg. calibre. The 520 mm long cold hammer forged barrel without iron sights has a cylindrical compensator fitted at the muzzle.

# CZ 557 AMERICAN LH

.30-06 Sprg. | 5    .308 Win. | 4

A mirror version of the popular CZ 557 AMERICAN model without iron sights for users with a dominant left hand. They will undoubtedly welcome the fact that the oiled walnut stock with a typical straight forend has a cheekpiece on the right side of the buttstock for comfortable aiming.



# CZ 557 RANGE RIFLE

.308 Win. | 10

A universal large capacity compact powerful rifle, intended chiefly for everyday use by professional hunters. This rifle is characterized by a two stage trigger, and in addition to iron sights, there is also a Weaver rail at the top of the receiver.



MODEL	CALIBER (RATE OF TWIST)	MAGAZINE CAPACITY	STOCK	SURFACE FINISH STOCK	CHEEKPIECE	L.O.P.	SUPPLY SYSTEM	TRIGGER	SIGHTS	BARREL	THREAD	COMPENSATOR	OVERALL LENGTH (MM)	BARREL LENGTH (MM)	WEIGHT (KG)
CZ 557 NIGHT SKY	.30-06 Sprg. (1:10) .308 Win. (1:10)	5 4	Polymer	Soft-touch	No	360	Fixed magazine Detachable magazine	Adjustable	No	Forged	M14×1	Yes	1042	520	3,2
CZ 557 AMERICAN LH	.30-06 Sprg. (1:10) .308 Win. (1:10)	5 4	Walnut	Oiled	Yes	355	Fixed magazine Detachable magazine	Adjustable	No	Forged	No	No	1116	610	3,3
CZ 557 RANGE RIFLE	.308 Win. (1:10)	10	Beech	Lacquered	No	360	Detachable magazine	Adjustable	Yes	Forged	No	No	1030	520	3,3



# CZ 557 VARMINT SYNTHETIC

.308 Win. | 10

A multi-purpose, large capacity and highly precise rifle with a heavy varmint style barrel and an interface system for the quick attachment of a riflescope. The reinforced symmetrical polymer stock in soft-touch finish is equipped with an adjustable cheekpiece.



High power, high accuracy, exceptional firing capacity, comfortable handling and extreme reliability in all climatic conditions. All of these are properties offered by the target and hunting special, the CZ 557 VARMINT SYNTHETIC. In addition to the advantages offered by the CZ 557 VARMINT RIFLE, this model brings extra benefits in the form of a polymer stock in a modern design reinforced with glass fibre, in a user friendly soft-touch finish. There is also an adjustable cheekpiece on both sides, which further aids comfort and accuracy. In basic configuration, this model is equipped with a lower Weaver mounting rail and an impressive 10-round detachable magazine in .308 Win. calibre.

## CZ 557 VARMINT

.308 Win. | 10

This effective and highly accurate rifle with a 650 mm long heavy barrel is suitable for target shooting and hunting, thanks to the ergonomic stock made of premium walnut. The Weaver rail at the top of the receiver allows for easy attachment of a riflescope.

## CZ 557 SYNTHETIC S

.30-06 Sprg. | 5 .308 Win. | 4

A model with a specially designed polymer stock with unique checkering, higher comb, robust buttplate and an enlarged forend. The soft-touch surface finish provides high user comfort. This model is available with or without iron sights.

## CZ 557 PREDATOR

.30-06 Sprg. | 5 .308 Win. | 4 6,5×55 | 5

In line with modern hunting trends, the polymer stock of this model has a soft-touch finish for comfortable and reliable grip in a forest camouflage pattern. The shooting comfort is further enhanced by an adjustable cheekpiece and a compensator is fitted on the M14×1 muzzle thread.

MODEL	CALIBER (RATE OF TWIST)	MAGAZINE CAPACITY	STOCK	SURFACE FINISH STOCK	CHEEKPIECE	L.O.P.	SUPPLY SYSTEM	TRIGGER	SIGHTS	BARREL	THREAD	COMPENSATOR	OVERALL LENGTH (MM)	BARREL LENGTH (MM)	WEIGHT (KG)
CZ 557 VARMINT SYNTHETIC	.308 Win. (1:10)	10	Polymer	Soft-touch	No	360	Detachable magazine	Adjustable	No	Forged	M18×1	No	1030	520	4
CZ 557 VARMINT	.308 Win. (1:10)	10	Walnut	Oiled	No	370	Detachable magazine	Adjustable	No	Forged	No	No	1170	650	5
CZ 557 SYNTHETIC S	.30-06 Sprg. (1:10), .308 Win. (1:10)	5, 4	Polymer	Soft-touch	No	360	Fixed magazine	Adjustable	Yes	Forged	No	No	1042	520	3,2
CZ 557 PREDATOR	.30-06 Sprg. (1:10), 6,5×55 (1:8,6) .308 Win. (1:10)	5, 5 4	Polymer	Soft-touch	No	360	Fixed magazine Detachable magazine	Adjustable	No	Forged	M14×1	Yes	1042	520	3,2

# CZ 557 ECLIPSE

.30-06 Sprg. | 5    .308 Win. | 5

We think of everybody. We know that some shooters only wish to spend the minimum amount of money but still require quality and accuracy. For such purposes, we have therefore expanded our portfolio by this “starter” CZ 557 model.

NEW



Whatever reasons you may have for choosing this economical option, you will not regret your choice. This model is based on the tried and tested CZ 557 barrelled action with a fixed magazine and a long receiver in two popular calibres, the .30-06 Sprg. and the .308 Win. The cold hammer forged and highly precise barrel has a M14×1 muzzle thread and an adjustable trigger mechanism. Low retail price on the European market has been achieved chiefly by using a black polymer stock without the soft-touch finish. The stock also has loops for a sling, the trigger guard is also made of polymer and the shape of the receiver has been redesigned to allow for easier manufacture. We have thus created an affordable gun which has retained all the crucial advantages of the excellent CZ 557 model series.

MODEL	CALIBER (RATE OF TWIST)	MAGAZINE CAPACITY	STOCK	SURFACE FINISH STOCK	CHEEKPIECE	L.O.P.	SUPPLY SYSTEM	TRIGGER	SIGHTS	BARREL	THREAD	COMPENSATOR	OVERALL LENGTH (MM)	BARREL LENGTH (MM)	WEIGHT (KG)
CZ 557 ECLIPSE	.30-06 Sprg. (1:10), .308 Win. (1:10)	5	Polymer	-	No	360	Fixed magazine	Adjustable	No	Forged	M14×1	No	1042	520	3,1



# CZ 550 SAFARI CLASSICS II.

.375 H&H | 5 .404 Jeffery | 5 .416 Rigby | 4 .458 Lott | 4

A new legend. This second generation of the legendary powerful and reliable SAFARI CLASSICS rifles for the highly challenging hunting of big game combines the knowledge and expertise of the CZ brand with the benefits of individual handcrafted workmanship.



These sophisticated SAFARI CLASSICS II rifles are intended for demanding clients who will appreciate the high-quality handcrafted workmanship, hi-tech anti-corrosion surface treatment, precise fit of the barrelled action in the stock, integrated recoil reducer in the butt of the stock, and a unique design which is the result of many years of experience of the CZ brand and its individual approach to these exceptional models intended for exceptional customers. The barrelled action is protected by extremely tough and durable DLC surface finish. Each rifle has a premium walnut stock with the grip surfaces decorated using 360° checkering, a decorative ebony detail at the tip and a robust buttplate made from natural rubber. The gloss version of this model is varnished, the matt version is oiled to emphasise the beautiful grain of the wood.

MODEL	CALIBER (RATE OF TWIST)	MAGAZINE CAPACITY	STOCK	SURFACE FINISH STOCK	CHEEKPIECE	L.O.P.	SUPPLY SYSTEM	TRIGGER	SIGHTS	BARREL	THREAD	COMPENSATOR	OVERALL LENGTH (MM)	BARREL LENGTH (MM)	WEIGHT (KG)
CZ 550 SAFARI CLASSICS II.	.375 H&H (1:12)	5	Walnut ++	Varnish / Oiled	Yes	355	Fixed magazine	Adjustable	Yes	Forged Button-Rifled Forged	No	No	1175	635	4,1 - 4,5
	.404 Jeffery (1:16,5)	5											1150	610	
	.416 Rigby (1:16,5)	4											1175	635	
	.458 Lott (1:14)	4											1175	635	

CZ **550 MAGNUM**  
STANDARD

.458 WM | 5    .375 HHM | 5

A basic version of the classic model for the hunting of heavy and strong game. The unfailing controlled round feed barrelled action of the CZ 550 is fitted into a symmetrical walnut stock which is varnished and does not have a cheekpiece.



CZ **550 MAGNUM**  
LUX

.458 WM | 5    .375 HHM | 5

This tried and tested powerful rifle for the hunting of strong heavy game is fitted with a high-quality walnut stock whose cheekpiece and slanted comb enable fast and comfortable aiming. The 635 mm long cold hammer forged barrel is equipped with a safari-style three leaf rear sight and a height-adjustable front sight.



BRNO  
**EXPRESS**

8×57 JRS | 2    9,3×74 R | 2

This ultimate over and under rifle is a perfect battue special. Its benefits include low weight, thermostable barrel block, superb accuracy and a single trigger. The upper barrel is equipped with a fibre optic front sight and an aperture rear sight. There is also an option to fit a riflescope mount or a Weaver rail.



BRNO  
**COMBO**

12 / 8×57 JRS | 2    12 / .30-06 Sprg. | 2    12 / .308 Win. | 2

Modern, elegant and lightweight, this rifle/shotgun combo gun is distinguished by its diminutive receiver. The lower rifle barrel is controlled by the front single set trigger, while the top shotgun barrel is controlled by the rear standard trigger. The stock is made of premium Turkish walnut, the barrel block may be replaced with BRNO EXPRESS rifle barrels.



MODEL	CALIBER (RATE OF TWIST)	MAGAZINE CAPACITY	STOCK	SURFACE FINISH STOCK	CHEEKPIECE	L.O.P.	SUPPLY SYSTEM	TRIGGER	SIGHTS	BARREL	THREAD	COMPENSATOR	OVERALL LENGTH (MM)	BARREL LENGTH (MM)	WEIGHT (KG)
CZ 550 MAGNUM STANDARD	.458 Wm (1:14), .375 Hhm (1:12)	4, 5	Walnut	Lacquered	No	370	Fixed magazine	SST	Yes	Forged	No	No	1180	635	4,2
CZ 550 MAGNUM LUX	.458 Wm (1:14), .375 Hhm (1:12)	4, 5	Walnut	Lacquered	Yes	370	Fixed magazine	SST	Yes	Forged	No	No	1180	635	4,2
BRNO EXPRESS	8×57 Jrs (1:9,4), 9,3×74 R (1:14,2)	2	Walnut	Oiled	Yes	365	x	Single trigger	Yes	Forged	No	No	980	550	3,3
BRNO COMBO	12 / 8×57 Jrs (1:9,4), 12 / .30-06 Sprg. (1:10), 12 / .308 Win. (1:10)	2	Walnut	Oiled	Yes	365	x	SST / Double trigger	Yes	Forged	No	No	1050	600	2,9



# CZ *TSR*

.308 Win. | 10

A sniper and sport special optimized for highly accurate long-distance shooting. In the development of this cutting-edge repeating rifle, CZ worked closely with elite police and military professionals.



In the CZ TSR model, everything has been focused on a single objective – to hit a target no matter what the conditions are. Several MIL-STD-1913 rails for the attachment of accessories are supplied as standard. The rifle is distinguished by perfect ergonomics with the option of individual adjustment of the key components (cheekpiece, length of stock, pistol grip size, ball end of the bolt handle, etc.), above standard working life (accuracy of SUB-MOA is guaranteed for at least 10,000 rounds) and 100 percent reliability in adverse conditions. A completely new feature for the market is an original folding stock system that provides superb rigidity and strength when shooting as well as secure position during transport. In addition, this system also allows for easy change of the folding direction.



1070-9052  
ANGLED MOUNT ADAPTER



1070-9053  
1-PIECE QUICK RELEASE MOUNT  
DIA. 30 MM 20 MOA



1070-9050  
1-PIECE MOUNT DIA. 30 MM 20 MOA

MODEL	CALIBER	MAGAZINE CAPACITY	BARREL LENGTH (MM)	OVERALL LENGTH WITH THE STOCK FOLDED / UNFOLDED-EXTENDED (MM)	HEIGHT (MM)	WIDTH WITH STOCK UNFOLDED / FOLDED (MM)	BARREL	WEIGHT WITHOUT MAGAZINE (KG)
CZ TSR	.308 Win. (1:11)	10	660 ± 1	931 / 1188 ± 10	192 ± 5	70 / 95 ± 5	Forged	max. 6,3

rifles

MODEL	CALIBER (RATE OF TWIST)	MAGAZINE CAPACITY	STOCK	SURFACE FINISH STOCK	CHEEKPIECE	L.O.P.	SUPPLY SYSTEM	TRIGGER	SIGHTS	BARREL	THREAD	COMPENSATOR	OVERALL LENGTH (MM)	BARREL LENGTH (MM)	WEIGHT (KG)
CZ 527 CARBINE SYNTHETIC	.223 Rem. (1:9), 7,62×39 (1:9,4)	5	Polymer	Soft-touch	No	355	Detachable magazine	SST	Yes	Forged	No	No	950	470	2,7
CZ 527 CARBINE	.223 Rem. (1:9), 7,62×39 (1:9,4)	5	Walnut	Oiled	No	355	Detachable magazine	SST	Yes	Forged	No	No	950	470	2,7
CZ 527 LUX	.22 Hornet (1:16), .223 Rem. (1:9)	5	Walnut	Oiled	Yes	360	Detachable magazine	SST	Yes	Forged	No	No	1077	600	2,8
CZ 527 LUX LH	.223 Rem. (1:9)	5	Walnut	Oiled	Yes	360	Detachable magazine	SST	Yes	Forged	No	No	1077	600	2,8
CZ 527 NIGHT SKY	.223 Rem. (1:9)	3	Polymer	Soft-touch	No	355	Detachable magazine	SST	No	Forged	M14×1	Yes	1025	555	2,6
CZ 527 AMERICAN	.22 Hornet (1:16), .223 Rem. (1:9), 6,5 Grendel (1:8), 7,62×39 (1:9,4)	5	Walnut	Lacquered	No	355	Detachable magazine	SST	No	Forged	No	No	1025	555	2,7
CZ 527 VARMINT	.223 Rem. (1:9)	5	Walnut	Lacquered	No	355	Detachable magazine	SST	No	Forged	M15×1	No	1085	650	3,3
CZ 527 EXCLUSIVE EBONY EDITION	.223 Rem. (1:9)	3	Walnut / Ebony	Oiled	Yes	355	Detachable magazine	SST	Yes	Forged	No	No	1025	555	2,7
CZ 527 THUMBHOLE	.17 Hornet (1:9), .223 Rem. (1:9)	5	Laminated wood	Lacquered	No	355	Detachable magazine	SST	Ne	Forged	M15×1	No	1062	610	3,6
CZ 527 VARMINT LAMINATED	.223 Rem. (1:9)	5	Laminated wood	Lacquered	No	355	Detachable magazine	SST	No	Forged	M15×1	No	1062	610	3,6
CZ 527 VARMINT MTR	.223 Rem. (1:9), 6,5 Grendel (1:8)	5	Walnut	Oiled	No	355	Detachable magazine	Adjustable	No	Forged	M18×1	No	1130	650	4
CZ 557 LUX II.	.30-06 Sprg. (1:10), 7×64 (1:8,6), 8×57 IS (1:9,4) .308 Win. (1:10)	5, 5, 5 4	Walnut	Oiled	Yes	370	Fixed magazine Detachable magazine	SST	Yes	Forged	No	No	1160	610	3,4
CZ 557 LUX	7×64 (1:8,6), .30-06 Sprg. (1:10), 6,5×55 (1:8,6), 8×57 IS (1:9,4)	5	Walnut	Oiled	Yes	370	Fixed magazine	Adjustable	Yes	Forged	No	No	1070	520	3,3
CZ 557 LUX LH	8×57 IS (1:9,4), .30-06 Sprg. (1:10) .308 Win. (1:10)	5, 5 4	Walnut	Oiled	Yes	370	Fixed magazine Detachable magazine	Adjustable	Yes	Forged	No	No	1040 1070	520	3,3
CZ 557 LUX SA	.243 Win. (1:10), .308 Win. (1:10)	4	Walnut	Oiled	Yes	370	Detachable magazine	Adjustable	Yes	Forged	No	No	1040	520	3,1
CZ 557 NIGHT SKY	.30-06 Sprg. (1:10) .308 Win. (1:10)	5 4	Polymer	Soft-touch	No	360	Fixed magazine Detachable magazine	Adjustable	No	Forged	M14×1	Yes	1042	520	3,2
CZ 557 AMERICAN LH	.30-06 Sprg. (1:10) .308 Win. (1:10)	5 4	Walnut	Oiled	Yes	355	Fixed magazine Detachable magazine	Adjustable	No	Forged	No	No	1116	610	3,3
CZ 557 RANGE RIFLE	.308 Win. (1:10)	10	Beech	Lacquered	No	360	Detachable magazine	Adjustable	Yes	Forged	No	No	1030	520	3,3
CZ 557 VARMINT SYNTHETIC	.308 Win. (1:10)	10	Polymer	Soft-touch	No	360	Detachable magazine	Adjustable	No	Forged	M18×1	No	1030	520	4
CZ 557 VARMINT	.308 Win. (1:10)	10	Walnut	Oiled	No	370	Detachable magazine	Adjustable	No	Forged	No	No	1170	650	5
CZ 557 SYNTHETIC S	.30-06 Sprg. (1:10), .308 Win. (1:10)	5	Polymer	Soft-touch	No	360	Fixed magazine	Adjustable	Yes	Forged	No	No	1042	520	3,2
CZ 557 PREDATOR	.30-06 Sprg. (1:10), 6,5×55 (1:8,6) .308 Win. (1:10)	5, 5 4	Polymer	Soft-touch	No	360	Fixed magazine Detachable magazine	Adjustable	No	Forged	M14×1	Yes	1042	520	3,2
CZ 557 ECLIPSE	.30-06 Sprg. (1:10), .308 Win. (1:10)	5	Polymer	-	No	360	Fixed magazine	Adjustable	No	Forged	M14×1	No	1042	520	3,1
CZ 550 SAFARI CLASSICS II.	.375 H&H (1:12)	5	Walnut ++	Varnish / Oiled	Yes	355	Fixed magazine	Adjustable	Yes	Forged Button-Rifled Forged Forged	No	Ne	1175	635	4,1 - 4,5
	.404 Jeffery (1:16,5)	5											1150	610	
	.416 Rigby (1:16,5)	4											1175	635	
	.458 Lott (1:14)	4											1175	635	
CZ 550 MAGNUM STANDARD	.458 Wm (1:14), .375 Hhm (1:12)	4, 5	Walnut	Lacquered	No	370	Fixed magazine	SST	Yes	Forged	No	No	1180	635	4,2
CZ 550 MAGNUM LUX	.458 Wm (1:14), .375 Hhm (1:12)	4, 5	Walnut	Lacquered	Yes	370	Fixed magazine	SST	Yes	Forged	No	No	1180	635	4,2
BRNO EXPRESS	8×57 Jrs (1:9,4), 9,3×74 R (1:14,2)	2	Walnut	Oiled	Yes	365	x	Single trigger	Yes	Forged	No	No	980	550	3,3
BRNO COMBO	12 / 8×57 Jrs (1:9,4), 12 / .30-06. (1:10), 12 / .308 Win. (1:10)	2	Walnut	Oiled	Yes	365	x	SST / Double trigger	Yes	Forged	No	No	1050	600	2,9

MODEL	CALIBER	MAGAZINE CAPACITY	BARREL LENGTH (MM)	OVERALL LENGTH WITH STOCK FOLDED /UNFOLDED-EXTENDED (MM)	HEIGHT (MM)	WIDTH WITH STOCK UNFLODED/FOLDED (MM)	BARREL	WEIGHT WITHOUT MAGAZINE (KG)
CZ TSR	.308 Win. (1:11)	10	660 ± 1	931/1188 ± 10	192 ± 5	70/95 ± 5	Forged	max. 6,3



# PISTOLS

For Česká zbrojovka a.s., semi-automatic pistols for defence, service and sport represent one the linchpins of success. The company has been developing and manufacturing these guns for more than 60 years, therefore it is very well aware of what matters in this field. Behind the great success of these new models there is a team of product managers with extensive experience in the armed forces and the best sport shooters on the planet. What is more, we are able to work in first-rate research and development facilities while using the latest cutting-edge production technologies. And finally, we really listen to you, our customers, and take your opinions into account. Thanks to this unique synergy, CZ pistols rightly belong amongst the absolute world's best.

With regard to this key sector, 2019 will be a year of integrating and supplementing our portfolio. Our newest products include the CZ Shadow 2 Orange sport special and the CZ-P 10 F and CZ-P 10 SC service and defence striker fired models. Whatever your preference of size and configuration, a rich range of pistol variants is available, in line with modern trends also complemented by rimfire conversions.





# CZ SHADOW 2 ORANGE

9×19 | 19/10

A perfect gun that ranks your shooting experience and results at an absolute top. The superb design base of this model has been improved by precisely targeted gunsmithing modifications and the use of top-quality sport parts.

NEW



The word Orange in the name of these CZ sport pistols stands for the highest possible quality and absolute top performance. The same is of course true for this model as well. It has been based on the CZ SHADOW 2 pistol which currently occupies the podium in the Production Division at the most prestigious international IPSC events. The ORANGE model, distinguishable at first glance by the new design of its aluminium grip panels in the typical orange colour, has been brought to perfection by tried and tested gunsmithing modifications. The main parts are hand fitted, the trigger mechanism is set for perfectly smooth trigger travel and has a shortened reset. The barrel is polished and to improve the already high accuracy, there is also a barrel bushing. Furthermore, the pistol is equipped with an IPSC hammer and an adjustable aluminium magazine release catch. The magazine has an aluminium base and the enlarged left safety catch provides better grip. A set of flat safeties and a flat slide stop can be purchased additionally.



## CZ SHADOW 2

9×19 | 19/10 9×21 | 19/10

A new level of a first-rate all-steel pistol for modern dynamic shooting events. A model which enables good shooters to give excellent performance and the best ones to triumph at the most prestigious IPSC competitions.

## CZ SHADOW 2 URBAN GREY

9×19 | 19/10 9×21 | 19/10

Traditional black is not the only colour that suits sport and tactical shooting. Our portfolio therefore includes a model whose frame is coated with a highly durable surface finish in a trendy and popular Urban Grey colour which beautifully contrasts with the black aluminium grip panels.

## CZ SHADOW 2 OR

9×19 | 19/10 9×21 | 19/10

The CZ SHADOW 2 pistol is extremely fast, yet at some shooting stages, it can be even faster. How is that possible? By using modern compact collimator sights. The OPTICS READY variant allows for their easy, exceptionally low and at the same time firm attachment.

## ADAPTER CZ SHADOW 2 KADET

.22 LR | 10

Training of shooting has never been more fun, not to mention lower operating costs. With this conversion kit, a user can easily and quickly convert the large-calibre CZ SHADOW 2 model to a highly precise and reliable rimfire version with the exact same controls.

MODEL	CALIBER	MAGAZINE CAPACITY	FRAME	GRIPS	TRIGGER	SIGHTS	OVERALL LENGTH (MM)	BARREL LENGTH (MM)	HEIGHT (MM)	WIDTH (MM)	WEIGHT (G)	SAFETY FEATURES
CZ SHADOW 2 ORANGE	9×19	19/10	Steel	Aluminium	SA/DA	Fibre optic front sight adjustable rear sight	217	120	157	34	1330	Manual safety, safety notch
CZ SHADOW 2	9×19, 9×21	19/10; 19/10	Steel	Aluminium	SA/DA	Fibre optic front sight adjustable rear sight	217	120	157	34	1330	Manual safety, safety notch
CZ SHADOW 2 URBAN GREY	9×19, 9×21	19/10; 19/10	Steel	Aluminium	SA/DA	Fibre optic front sight adjustable rear sight	217	120	157	34	1330	Manual safety, safety notch
CZ SHADOW 2 OR	9×19, 9×21	19/10; 19/10	Steel	Aluminium	SA/DA	Fibre optic front sight adjustable rear sight	217	120	157	34	1330	Manual safety, safety notch
ADAPTER CZ SHADOW 2 KADET	.22 LR	10	-	-	-	Metal, height adjustable	190	120	41	27	300	-



# CZ P-10 F

9×19 | 19

There are situations when a pistol user appreciates a good grip, a large magazine capacity or a long sight line. These are the main benefits of this new member of the exceptionally successful CZ P-10 family: a standard size striker fired model.

NEW



The reason why the compact C model was the first model from the CZ P-10 series to have been introduced to the market is clear – guns of this type have been bestsellers for a long time. However, a considerable number of customers prefer as secure a grip as possible to the small dimensions. In many cases, a longer barrel is also preferable, which goes hand in hand with a longer sight line and a large number of rounds in the magazine. Therefore, this range of pistols has been supplemented by the CZ P-10 F model in a standard size with an impressive magazine capacity of 19 rounds in 9×19 calibre. Naturally, there is also the superb ergonomics and the exceptionally good trigger travel. With the overall length of 203 mm, height of 150 mm and a barrel length of 114 mm, the pistol weighs just 0.8 kg when empty! This perfectly reliable service and defence pistol provides the user with all the prerequisites for achieving direct hits in any situation.

NEW



## CZ P-10 SC

9×19 | 15 (17)

A perfect model for users who would like to carry their pistol as covertly as possible and as comfortably as possible, but who also want to maximise the potential of the 9×19 cartridge as well as the advantages of a long barrel and slide. This semi-compact duly combines the standard size barrel and slide with a compact polymer frame.



## CZ P-10 C

9×19 | 15 (17)

Thanks to its dimensions, innovative design and large firing capacity, this highly advanced and compact striker fired pistol is suitable for armed forces as well as concealed carry for personal defence. There is a new feature in the form of a reversible magazine release.



## CZ P-10 C OR

9×19 | 15

A model with the slide modified for the easy attachment of a collimator sight. The company's original solution is characterized by robustness, strength and durability of assembly, low mounting height, easy sighting of a collimator sight even at long distances, and the option to use extended iron sights in the event of the optics failing.



## CZ P-10 C FDE

9×19 | 15 (17)

A compact model fitted with tritium sights as standard. Its ergonomic frame in a popular tactical Flat Dark Earth colour design has a grip with interchangeable backstraps (the basic accessories include three sizes). There is a new feature in the form of a reversible magazine release.

MODEL	CALIBER	MAGAZINE CAPACITY	FRAME	GRIPS	TRIGGER	SIGHTS	OVERALL LENGTH (MM)	BARREL LENGTH (MM)	HEIGHT (MM)	WIDTH (MM)	WEIGHT (G)	SAFETY FEATURES
CZ P-10 F	9×19	19	Highly durable polymer		SFDA	Metal, luminescent	203	114	150	32	800	Trigger safety (drop safety); striker block (drop safety); trigger bar safety
CZ P-10 SC	9×19	15 (17)	Highly durable polymer		SFDA	Metal, luminescent	203	114	132	32	780	Trigger safety (drop safety); striker block (drop safety); trigger bar safety
CZ P-10 C	9×19	15 (17)	Highly durable polymer		SFDA	Metal, luminescent	187	102	132	32	740	Trigger safety (drop safety); striker block (drop safety); trigger bar safety
CZ P-10 C OR	9×19	15	Highly durable polymer		SFDA	Metal, luminescent	187	102	132	32	740	Trigger safety (drop safety); striker block (drop safety); trigger bar safety
CZ P-10 C FDE	9×19	15 (17)	Highly durable polymer		SFDA	Metal, tritium	187	102	132	32	740	Trigger safety (drop safety); striker block (drop safety); trigger bar safety

# CZ P-07

9×19 | 15 (17)    9×21 | 15 (17)    .380 AUTO | 15    .40 S&W | 12 (15)

A compact SA/DA pistol with an external hammer and a highly durable polymer frame. This extremely popular model is remarkably accurate and reliable in all climatic conditions. It is chiefly intended for the armed forces and for concealed carry.



An ideal pistol for all fans of the traditional SA/DA concept with an external hammer in combination with a highly advanced frame made of reinforced polymer. Its compact dimensions and lighter weight make it the perfect choice for all day concealed carry. Drawing is fast and smooth thanks to the absence of sharp edges. Included in the package are additional magazine baseplates which increase the capacity, three interchangeable backstraps and interchangeable manual safety/decocking controls of the original OMEGA trigger mechanism. Users are therefore able to customize their pistols to their own preferences.



CZ **P-07** FDE  
9×19 | 15 (17)    9×21 | 15 (17)    .40 S&W | 12 (15)

An SA/DA compact variant with an external hammer, tritium sights and reinforced polymer frame in a popular tactical Flat Dark Earth colour design. There is of course an enlarged trigger guard for easy shooting while wearing gloves and a MIL-STD-1913 mounting rail at the front of the frame.



CZ **P-07** KADET  
.22 LR | 10

A rimfire version of the compact CZ P-07 pistol. The design of this model retains the controls of the large-calibre model to the maximum, which makes it the perfect model for training purposes. The frame in this version is black.



CZ **P-07** KADET  
URBAN GREY  
.22 LR | 10

This compact rimfire pistol has a frame made of strong polymer in attractive Urban Grey colour contrasting with the striking black of the controls. All CZ P-07 Kadet pistols have an original 10-round magazine which aids reliability.



ADAPTER  
CZ **P-07** KADET  
.22 LR | 10

A complete conversion kit which enables a quick and easy conversion of all large-calibre CZ P-07 compacts to a more user-friendly and affordable version for .22 LR calibre. No specialist fitting is required to use this adapter.

MODEL	CALIBER	MAGAZINE CAPACITY	FRAME	GRIPS	TRIGGER	SIGHTS	OVERALL LENGTH (MM)	BARREL LENGTH (MM)	HEIGHT (MM)	WIDTH (MM)	WEIGHT (G)	SAFETY FEATURES
CZ P-07	9×19, 9×21, .380 AUTO, .40 S&W	15 (17), 15 (17), 15, 12 (15)	Highly durable polymer	–	SA/DA	Metal, luminescent	185	95	137	37	800	Decocking/manual safety, safety notch, firing pin block
CZ P-07 FDE	9×19, 9×21, .40 S&W	15 (17), 15 (17), 12 (15)	Highly durable polymer	–	SA/DA	Metal, tritium	185	95	137	37	800	Decocking/manual safety, safety notch, firing pin block
CZ P-07 KADET	.22 LR	10	Highly durable polymer	–	SA/DA	Metal, height adjustable	191	103	137	37	561	Decocking/manual safety, safety notch
CZ P-07 KADET URBAN GREY	.22 LR	10	Highly durable polymer	–	SA/DA	Metal, height adjustable	191	103	137	37	561	Decocking/manual safety, safety notch
ADAPTER CZ P-07 KADET	.22 LR	10	–	–	–	Metal, height adjustable	170	103	40	27	265	–



# CZ P-09

9×19 | 19 (21)    9×21 | 19 (21)    .40 S&W | 15 (17)

Large-capacity traditional SA/DA concept service pistols with an external hammer and a modern frame made of high-strength polymer. The advantages of this model include high accuracy and perfect reliability even in the most adverse climatic conditions.



Although compact pistols have dominated the handgun market for quite a while, standard size models still retain an important position. They are the right choice for service purposes, personal defence or practical sport shooting. Regarding SA/DA pistols with an external hammer, the CZ P-09 is a globally renowned model. Its characteristic features include extremely high resistance against adverse conditions, corrosion and mechanical damage. It is also valued for its reliable control, shooting comfort and excellent ergonomics. The OMEGA trigger mechanism allows the user to easily change the manual safety and decocking controls.



## CZ P-09 FDE

9×19 | 19 (21)    9×21 | 19 (21)    .40 S&W | 15 (17)

In keeping with modern trends, the standard CZ P-09 model has also received a new variant, this time with tritium sights and the frame in a popular Flat Dark Earth colour. Regardless of the colour, the grips have interchangeable backstraps that enable the user to effortlessly change the ergonomics according to their own preferences.



## CZ P-09 KADET

.22 LR | 10

This rimfire version of the standard size SA/DA hammer model is extremely reliable. This is partly due to a set of recoil springs, included in the standard accessories, which allow the user to fine-tune the function in accordance with the particular type of .22 LR cartridges used.



## CZ P-09 KADET URBAN GREY

.22 LR | 10

An SA/DA rimfire pistol with an external hammer and polymer frame in the popular tactical Urban Grey colour. Thanks to the controls, which are identical to the large-calibre version, and maximum reliability, enhanced by a set of recoil springs for various types of .22 LR cartridges, this is the perfect model for training.



## ADAPTER CZ P-09 KADET

.22 LR | 10

A complete conversion kit for the easy and fast conversion of large-calibre CZ P-09 models to .22 LR calibre. Included in the standard accessories is a set of recoil springs ensuring reliable function for all kinds of ammunition, and an original 10-round magazine.

MODEL	CALIBER	MAGAZINE CAPACITY	FRAME	GRIPS	TRIGGER	SIGHTS	OVERALL LENGTH (MM)	BARREL LENGTH (MM)	HEIGHT (MM)	WIDTH (MM)	WEIGHT (G)	SAFETY FEATURES
CZ P-09	9×19, 9×21, .40 S&W	19 (21), 15 (17)	Highly durable polymer	–	SA/DA	Metal, luminescent	208	115	148	37	890	Decocking/manual safety, safety notch, firing pin block
CZ P-09 FDE	9×19, 9×21, .40 S&W	19 (21), 15 (17)	Highly durable polymer	–	SA/DA	Metal, tritium	208	115	148	37	890	Decocking/manual safety, safety notch, firing pin block
CZ P-09 KADET	.22 LR	10	Highly durable polymer	–	SA/DA	Metal, height adjustable	208	120	147	37	640	Decocking/manual safety, safety notch
CZ P-09 KADET URBAN GREY	.22 LR	10	Highly durable polymer	–	SA/DA	Metal, height adjustable	208	120	147	37	640	Decocking/manual safety, safety notch
ADAPTER CZ P-09 KADET	.22 LR	10	–	–	–	Metal, height adjustable	186	120	41	27	300	–



CZ 75 TS  
ORANGE

9×19 | 20 (17) .40 S&W | 20 (17)

A top of the range sport special for the Standard Division in IPSC. The hand fitted barrel has a significantly longer lifetime, there is distinctive checkering on the pistol grip which, together with an undercut trigger guard and deep beavertail, improves the overall ergonomics and control. New features include a modified safety set (a wide left safety and a flat right one), enlarged aluminium magazine release and an aluminium trigger.



CZ 75 TS  
CZECHMATE

9×19 | 20 (20) 9 MM MAJOR | 20 (20)

A sport special inspired by individually fine-tuned guns of the elite shooters in the IPSC Open Division. All the parts are masterfully fitted together, run in and tested. Each pistol is supplied with an extensive set of accessories, including a C-more side mount for a collimator sight. Thus, each pistol is ready to perform at its best upon delivery.



CZ 75 SP-01  
SHADOW

9×19 | 18 (19) 9×21 | 10

A modern-day legend. The IPSC Production Division world champions have been involved in the development of this all-steel SA/DA large-calibre pistol with an external hammer. Thanks to its exceptional properties, this model has also become the handgun of choice in several foreign armed forces.



CZ 75 SP-01  
SHADOW ORANGE

9×19 | 18 (19) 9×21 | 10

A sport special offering a unique combination of precision, reliability and comfort. It is characterized by a hand-fitted polished barrel, lateral clearance control of the slide and debugging of the trigger mechanism. With regard to modernization, this model is supplied with a new safety set (a wide left safety and a flat right one), enlarged aluminium magazine release, adjustable rear sight and shortened trigger reset.



ADAPTER  
CZ 75 SP-01 KADET

.22 LR | 10

A conversion kit for easy user conversion of all large-calibre CZ SP-01 pistols with SHADOW frames to a version for .22 LR cartridges. This conversion does not require specialist fitting. Included in the standard accessories is a set of recoil springs ensuring reliable function of all kinds of ammunition.

MODEL	CALIBER	MAGAZINE CAPACITY	FRAME	GRIPS	TRIGGER	SIGHTS	OVERALL LENGTH (MM)	BARREL LENGTH (MM)	HEIGHT (MM)	WIDTH (MM)	WEIGHT (G)	SAFETY FEATURES
CZ 75 TS ORANGE	9×19, .40 S&W	20 (17)	Steel	Aluminium	SA	Fibre optic front sight adjustable rear sight	225	130	150	45	1270	Manual safety, safety notch
CZ 75 TS CZECHMATE	9×19, 9 mm MAJOR	20 (20)	Steel	Aluminium	SA	Collimator and fixed	266	130	140	62	1360	Manual safety, safety notch
CZ 75 SP-01 SHADOW	9×19, 9×21	18 (19), 10	Steel	Rubber	SA/DA	Fibre optic front sight fixed rear sight	209	114 / 120	150	42	1180	Manual safety, safety notch
CZ 75 SP-01 SHADOW ORANGE	9×19, 9×21	19 (19), 10	Steel	Aluminium	SA/DA	Fibre optic front sight adjustable rear sight	209	115 / 120	150	42	1180	Manual safety, safety notch
ADAPTER CZ SP-01 KADET	.22 LR	10	-	-	-	Metal, height adjustable	185	120	41	24	275	-





CZ 75 B Ω

9×19 | 16

A new generation of the timeless CZ 75 B model with an OMEGA trigger mechanism with manual safety/decocking controls on both sides. The shape of the trigger and hammer have been modernized for improved control, the steel sights have three luminescent dots.



CZ 75 B

9×19 | 16

A modern version of one of the most famous pistols of all time. This all-steel large-calibre SA/DA pistol with an external hammer still captivates users with its superb ergonomics and low trigger pull weight. The letter B stands for the automatic striker block which improves drop safety.



CZ 75 B  
STAINLESS

9×19 | 16

A classic model in elegant design, extremely resistant against corrosion. The frame, slide and barrel of this model are made of high-quality stainless steel. Polished and matte versions are also available.



CZ 75 B  
NEW EDITION

9×19 | 16

A luxury model made from high quality stainless steel with a matte finish and decorative engravings on selected parts of the slide and frame. Tritium sights and brown wooden grip panels with checkering are included as standard accessories.



ADAPTER  
CZ 75 KADET 2

.22 LR | 10

A conversion kit for the conversion of pistols from the CZ 75 (including the CZ 75 B Ω and the compact models), CZ 85 and CZ SP-01 series to .22 LR calibre. The adapter is equipped with its own height and side adjustable sights. We recommend the conversion be carried out by a specialized workshop or a gunsmith.

MODEL	CALIBER	MAGAZINE CAPACITY	FRAME	GRIPS	TRIGGER	SIGHTS	OVERALL LENGTH (MM)	BARREL LENGTH (MM)	HEIGHT (MM)	WIDTH (MM)	WEIGHT (G)	SAFETY FEATURES
CZ 75 B Ω	9×19	16	Steel	Rubber	SA/DA	Metal, luminescent	206	114	138	35	1000	Decocking/manual safety, safety notch, firing pin block
CZ 75 B	9×19	16	Steel	Plastic	SA/DA	Metal, luminescent	206	114	138	35	1000	Bezpečnostní ozub, Blokování zápalníku, Manuální pojistka
CZ 75 B STAINLESS	9×19	16	Stainless steel	Rubber	SA/DA	Metal, luminescent	206	114	138	35	1150	Manual safety, safety notch, firing pin block
CZ 75 B NEW EDITION	9×19	16	Stainless steel	Wood	SA/DA	Metal, tritium	206	114	138	35	1150	Manual safety, safety notch, firing pin block
ADAPTER CZ 75 KADET 2	.22 LR	10	-	-	-	Metal, adjustable	205	217		36		-



CZ 75 P-01 Ω

9×19 | 14

A popular compact with a frame made of aluminium alloy, equipped with the OMEGA trigger mechanism with easily exchangeable manual safety/decocking controls on both sides. The pistol also has a modernized trigger, hammer and steel sights with luminescent dots.



CZ 2075 RAMI

9×19 | 10 (14) .40 S&W | 8 (10)

Small but nifty – this is an original subcompact variation based on the CZ 75. Despite the significantly smaller dimensions, it has retained friendly ergonomics and high precision, while the double stack magazine provides an impressive firing capacity.



CZ 75 COMPACT

9×19 | 15

An all-steel compact version based on the CZ 75/85 models, equipped with an automatic striker block. There is also a traditional SA/DA CZ 75 trigger and striking mechanism and a manual safety catch on the left side. The magazine capacity is 15 rounds.



CZ 97 B

.45 AUTO | 10

The perfect symbiosis of the excellent ergonomics of CZ 75 pistols and the exceptional power of the .45 Auto calibre. The pistol boasts an impressive magazine capacity, refined operation during firing and high accuracy. The 97 utilizes a barrel bushing to secure the barrel in the slide, allowing for a tighter slide-to-barrel fit and increasing accuracy.

MODEL	CALIBER	MAGAZINE CAPACITY	FRAME	GRIPS	TRIGGER	SIGHTS	OVERALL LENGTH (MM)	BARREL LENGTH (MM)	HEIGHT (MM)	WIDTH (MM)	WEIGHT (G)	SAFETY FEATURES
CZ 75 P-01 Ω	9×19	14	Aluminium	Rubber	SA/DA	Metal, luminescent	184	93	128	38	800	Decocking/manual safety, safety notch, firing pin block
CZ 75 COMPACT	9×19	15	Steel	Plastic	SA/DA	Metal, luminescent	184	93	128	36	920	Manual safety, safety notch, firing pin block
CZ 2075 RAMI	9×19, .40 S&W	10 (14); 8 (10)	Aluminium	Rubber	SA/DA	Metal, luminescent	168	75	120	32	695	Manual safety, safety notch, firing pin block
CZ 97 B	.45 AUTO	10	Steel	Wood	SA/DA	Metal, luminescent	212	115	150	35	1150	Safety, firing pin block, loaded chamber indicator



pistols

MODEL	CALIBER	MAGAZINE CAPACITY	FRAME	GRIPS	TRIGGER	SIGHTS	OVERALL LENGTH (MM)	BARREL LENGTH (MM)	HEIGHT (MM)	WIDTH (MM)	WEIGHT (G)	SAFETY FEATURES
CZ SHADOW 2 ORANGE	9×19	19/10	Steel	Aluminium	SA/DA	Fibre optic front sight adjustable rear sight	217	120	157	34	1330	Manual safety, safety notch
CZ SHADOW 2	9×19, 9×21	19/10; 19/10	Steel	Aluminium	SA/DA	Fibre optic front sight adjustable rear sight	217	120	157	34	1330	Manual safety, safety notch
CZ SHADOW 2 URBAN GREY	9×19, 9×21	19/10; 19/10	Steel	Aluminium	SA/DA	Fibre optic front sight adjustable rear sight	217	120	157	34	1330	Manual safety, safety notch
CZ SHADOW 2 OR	9×19, 9×21	19/10; 19/10	Steel	Aluminium	SA/DA	Fibre optic front sight adjustable rear sight	217	120	157	34	1330	Manual safety, safety notch
ADAPTER CZ SHADOW 2 KADET	.22 LR	10	–	–	–	Metal, height adjustable	190	120	41	27	300	–
CZ P-10 F	9×19	19	Highly durable polymer	–	SFDA	Metal, luminescent	203	114	150	32	800	Trigger safety; drop safety # 1 striker block; drop safety # 2 trigger bar safety
CZ P-10 SC	9×20	15 (17)	Highly durable polymer	–	SFDA	Metal, luminescent	203	114	132	32	780	Trigger safety; drop safety # 1 striker block; drop safety # 2 trigger bar safety
CZ P-10 C	9×19	15 (17)	Highly durable polymer	–	SFDA	Metal, luminescent	187	102	132	32	740	Trigger safety; drop safety # 1 striker block; drop safety # 2 trigger bar safety
CZ P-10 C OR	9×19	15	Highly durable polymer	–	SFDA	Metal, luminescent	187	102	132	32	740	Trigger safety; drop safety # 1 striker block; drop safety # 2 trigger bar safety
CZ P-10 C FDE	9×19	15 (17)	Highly durable polymer	–	SFDA	Metal, tritium	187	102	132	32	740	Trigger safety; drop safety # 1 striker block; drop safety # 2 trigger bar safety
CZ P-07	9×19, 9×21, .380 AUTO, .40 S&W	15 (17), 15 (17), 15, 12 (15)	Highly durable polymer	–	SA/DA	Metal, luminescent	185	95	137	37	800	Decocking/manual safety, safety notch, firing pin block
CZ P-07 FDE	9×19, 9×21, .40 S&W	15 (17), 15 (17), 12 (15)	Highly durable polymer	–	SA/DA	Metal, tritium	185	95	137	37	800	Decocking/manual safety, safety notch, firing pin block
CZ P-07 KADET	.22 LR	10	Highly durable polymer	–	SA/DA	Metal, height adjustable	191	103	137	37	561	Decocking/manual safety, safety notch
CZ P-07 KADET URBAN GREY	.22 LR	10	Highly durable polymer	–	SA/DA	Metal, height adjustable	191	103	137	37	561	Decocking/manual safety, safety notch
ADAPTER CZ P-07 KADET	.22 LR	10	–	–	–	Metal, height adjustable	170	103	40	27	265	–
CZ P-09	9×19, 9×21, .40 S&W	19 (21), 15 (17)	Highly durable polymer	–	SA/DA	Metal, luminescent	208	115	148	37	890	Decocking/manual safety, safety notch, firing pin block
CZ P-09 FDE	9×19, 9×21, .40 S&W	19 (21), 15 (17)	Highly durable polymer	–	SA/DA	Metal, tritium	208	115	148	37	890	Decocking/manual safety, safety notch, firing pin block
CZ P-09 KADET	.22 LR	10	Highly durable polymer	–	SA/DA	Metal, height adjustable	208	120	147	37	640	Decocking/manual safety, safety notch
CZ P-09 KADET URBAN GREY	.22 LR	10	Highly durable polymer	–	SA/DA	Metal, height adjustable	208	120	147	37	640	Decocking/manual safety, safety notch
ADAPTER CZ P-09 KADET	.22 LR	10	–	–	–	Metal, height adjustable	186	120	41	27	300	–
CZ 75 TS ORANGE	9×19, .40 S&W	20 (17)	Steel	Aluminium	SA	Fibre optic front sight adjustable rear sight	225	130	150	45	1270	Manual safety, safety notch
CZ 75 TS CZECHMATE	9×19, 9 mm MAJOR	20 (20)	Steel	Aluminium	SA	Collimator, fixed	266	130	140	62	1360	Manual safety, safety notch
CZ 75 SP-01 SHADOW	9×19, 9×21	18 (19), 10	Steel	Rubber	SA/DA	Fibre optic front sight fixed rear sight	209	114 / 120	150	42	1180	Manual safety, safety notch
CZ 75 SP-01 SHADOW ORANGE	9×19, 9×21	19 (19), 10	Steel	Aluminium	SA/DA	Fibre optic front sight adjustable rear sight	209	115 / 120	150	42	1180	Manual safety, safety notch
ADAPTER CZ SP-01 KADET	.22 LR	10	–	–	–	Metal, height adjustable	185	120	41	24	275	–
CZ 75 B Ω	9×19	16	Steel	Rubber	SA/DA	Metal, luminescent	206	114	138	35	1000	Decocking/manual safety, safety notch, firing pin block
CZ 75 B	9×19	16	Steel	Plastic	SA/DA	Metal, luminescent	206	114	138	35	1000	Manual safety, safety notch, firing pin block
CZ 75 B STAINLESS	9×19	16	Stainless steel	Rubber	SA/DA	Metal, luminescent	206	114	138	35	1150	Manual safety, safety notch, firing pin block
CZ 75 B NEW EDITION	9×19	16	Stainless steel	Wood	SA/DA	Metal, tritium	206	114	138	35	1150	Manual safety, safety notch, firing pin block
ADAPTER CZ 75 KADET 2	.22 LR	10	–	–	–	Metal, adjustable	205	117	41	36	480	–
CZ 75 P-01 Ω	9×19	14	Aluminium	Rubber	SA/DA	Metal, luminescent	184	93	128	38	800	Decocking/manual safety, safety notch, firing pin block
CZ 75 COMPACT	9×19	15	Steel	Rubber	SA/DA	Metal, luminescent	184	93	128	36	920	Manual safety, safety notch, firing pin block
CZ 2075 RAMI	9×19, .40 S&W	10 (14); 8 (10)	Aluminium	Rubber	SA/DA	Metal, luminescent	168	75	120	32	695	Manual safety, safety notch, firing pin block
CZ 97 B	45 AUTO	10	Steel	Wood	SA/DA	Metal, luminescent	212	115	150	35	1150	Safety, firing pin block, loaded chamber indicator

# SEMI-AUTO



Dynamic shooting sports, hobby shooting or security service – these are the most common examples of use for semi-automatic variants of CZ automatic firearms.

Automatic firearms from Česká zbrojovka a.s. belong among the absolute world's best in its class, and the same goes for their strictly semi-automatic variants. The latest products on offer are the CZ SCORPION EVO 3 S1 CARBINE in 9×19 cal. and the CZ BREN 2 MS in .223 Rem. and 7.62×39 cal. They are characterized by exceptional durability and lifetime, superb accuracy even in rapid fire, ease of handling and stripping for basic maintenance, reliable function with all types of ammunition, abundance of basic accessories and a very favourable price-performance ratio.

This series simply fulfils the dreams of fans of service firearms.





# CZ SCORPION

## EVO 3 S1 CARBINE

9 mm Luger | 20

Thanks to the low weight, excellent ergonomics, supreme reliability in all conditions, and exceptionally fast reloading, it is an ideal weapon for modern sport shooting and hobby shooting.



# CZ SCORPION

## EVO 3 S1

9 mm Luger | 20

This is the strictly semi-automatic variant of the modern submachine gun legend, the CZ SCORPION EVO 3 A1. This easy to control gun in simple design is exceptionally reliable, light and accurate, making it an ideal gun for security forces as well as for sport shooting.



The design of this semi-automatic carbine has been based on the tried and tested concept of the CZ SCORPION EVO 3. In addition to the numerous advantages of this original weapons system, the carbine also has a 411 mm long barrel which fully exploits the ballistic potential of 9 mm Luger cartridges. The modular concept allows the barrel be covered by a new extended forend that has a MIL-STD-1913 rail at the top and an M-LOK interface system on the bottom and on the sides. The CZ SCORPION EVO 3 S1 CARBINE model comes with a dual chamber muzzle brake or a faux silencer.

model	CALIBER	MAGAZINE CAPACITY	BARREL LENGTH (MM)	OVERALL LENGTH WITH STOCK FOLDED / UNFOLDED-EXTENDED (MM)	HEIGHT WITH SIGHTS, W/O MAGAZINE (MM)	WIDTH WITH STOCK UNFLODED / FOLDED (MM)	BARREL	WEIGHT WITHOUT MAGAZINE (KG)
CZ SCORPION EVO 3 S1 CARBINE	9 mm Luger	20	412 ± 1	631 / 875-915 ± 10	215 ± 5	60 / 82 ± 5	Cold hammer forged	2,87 ± 0,05
CZ SCORPION EVO 3 S1	9 mm Luger	20	196 ± 1	420 / 615-665 ± 10	215 ± 5	60 / 82 ± 5	Cold hammer forged	2,55 ± 0,05

# CZ *BREN 2* MS

.223 REM. | 30

This is a strictly semi-automatic variant of the CZ BREN 2 assault rifle, which is the result of professional collaboration in order to satisfy world markets that require a civilian version of our popular assault rifle.



## CZ *BREN 2* MS

7,62×39 | 30

In this semi-automatic rifle, the superb design properties of the CZ BREN 2 system are combined with the impressive ballistic performance of the 7.62x39 calibre. The result is a powerful, accurate and reliable rifle that has no equal rival.



The CZ BREN 2 weapon system is one of the most sophisticated on the global market. Its advantages include simple design, extreme reliability, high accuracy, low weight, excellent ergonomics and ambidextrous or easy to adjust controls. These properties are also fully retained in the semi-automatic model in the popular .223 Rem. calibre. In comparison with the automatic version, this model does not have the option of short burst fire, while the most significant difference is the independent forend and the absence of mounting rails on the bottom and the sides. This enables users to customize and fine tune their models to their own preferences.

Model	CALIBER	MAGAZINE CAPACITY	BARREL LENGTH (MM)	OVERALL LENGTH WITH STOCK FOLDED / UNFOLDED-EXTENDED (MM)	HEIGHT WITH SIGHTS, W/O MAGAZINE (MM)	WIDTH WITH STOCK UNFLODED / FOLDED (MM)	BARREL	WEIGHT WITHOUT MAGAZINE (KG)
CZ BREN 2 MS	.223 Rem.	30	280 ± 1	577 / 762-807 ± 10	202 ± 5	80 / 104 ± 5	Cold hammer forged	2,90 ± 0,05
CZ BREN 2 MS	7,62×39	30	280 ± 1	577 / 762-807 ± 10	202 ± 5	80 / 104 ± 5	Cold hammer forged	2,90 ± 0,05





5133-1000-01ND  
MAGAZINE CZ 455/CZ 457  
.22 LR 5 ROUND METAL



5133-1000-02ND  
MAGAZINE CZ 455/CZ 457/CZ 512  
.22 LR 5 ROUND POLYMER



5073-1000-8802ND  
MAGAZINE CZ 455/CZ 457/CZ 512  
WMR/HMR 5 ROUND POLYMER



5273-1054-6415ND  
MAGAZINE CZ 527 .223 REM.  
3 ROUND



5273-1051-6409ND  
MAGAZINE CZ 527 .223 REM.  
5 ROUND  
5273-1051-0209ND  
MAGAZINE CZ 527 .17/22 HORNET  
5 ROUND  
273-1051-3909ND  
MAGAZINE CZ 527 .204 RUGER  
5 ROUND  
5273-1051-4009ND  
MAGAZINE CZ 527 .222 REM.  
5 ROUND  
5273-1052-43ND  
MAGAZINE CZ 527 7,62X39 5 ROUND



5133-1200-01ND  
MAGAZINE CZ 455/CZ 457  
.22 LR 10 ROUND METAL



5073-1200-8802ND  
MAGAZINE CZ 455/CZ 457/CZ 512  
WMR/HMR 10 ROUND POLYMER



5133-1200-02ND  
MAGAZINE CZ 455/CZ 457/CZ 512  
.22 LR 10 ROUND POLYMER



5572-2000-5303ND  
MAGAZINE CZ 557 .243 WIN.  
/308 WIN. 4 ROUND



5572-2000-5302ND  
MAGAZINE CZ 557 .243 WIN.  
/308 WIN. 10 ROUND



5131-1001-02ND  
SINGLE ROUND INSERT  
CZ 455/CZ 457 .22LR



5123-1225-02ND  
MAGAZINE CZ 455/CZ 457/CZ 512  
.22 LR 25 ROUND POLYMER



1091-1021  
MAGAZINE 10 ROUND FOR  
CZ 200 .177



1091-1022  
MAGAZINE 10 ROUND FOR  
CZ 200 .22



1023-4060-4406ND  
MAGAZINE 5 ROUND FOR  
CZ 200 .22

1091-1023  
SPARE DISC FOR .177 DIABOLO

1091-1024  
SPARE DISC FOR .22 DIABOLO

1002-5100-01  
CZ 455 TRIGGER GUARD SET  
22 LR BLACK



1002-5100-02  
CZ 455 TRIGGER GUARD SET  
22 LR YELLOW



1002-5100-03  
CZ 455 TRIGGER GUARD SET  
22 LR GREEN



1002-5100-04  
CZ 455 TRIGGER GUARD SET  
22 LR RED



1002-5100-05  
CZ 455 TRIGGER GUARD SET  
22 LR BLUE



6593-2000-01ND  
MOUNT 2-PIECE CZ 527  
DIA. 1" BORDSON



6593-6000-01ND  
MOUNT 2-PIECE CZ 527  
DIA. 30MM BORDSON

5073-1900-01ND  
REAR SIGHT FOR CZ 455/  
CZ 457 CAMP RIFLE



6593-3000-01ND  
MOUNT 2-PIECE CZ 455/CZ 457/  
CZ 512/CZ 200 DIA. 1" BORDSON



6593-7000-01ND  
MOUNT 2-PIECE CZ 455/CZ 457/CZ  
512/CZ 200 DIA. 30MM BORDSON

6593-5000-01ND  
MOUNT 2-PIECE CZ 550/557  
DIA. 30MM BORDSON

6593-1000-01ND  
MOUNT 2-PIECE CZ 550/557  
DIA. 1" BORDSON

6793-1000-01ND  
MOUNT 1-PIECE CZ 557 DIA. 1"  
6793-5000-01ND  
MOUNT 1-PIECE CZ 557 DIA. 30MM



1070-9010  
MOUNT 1-PIECE BRNO COMBO/  
EXPRESS; 1" MM  
1070-9011  
MOUNT 1-PIECE BRNO COMBO/  
EXPRESS; 30 MM



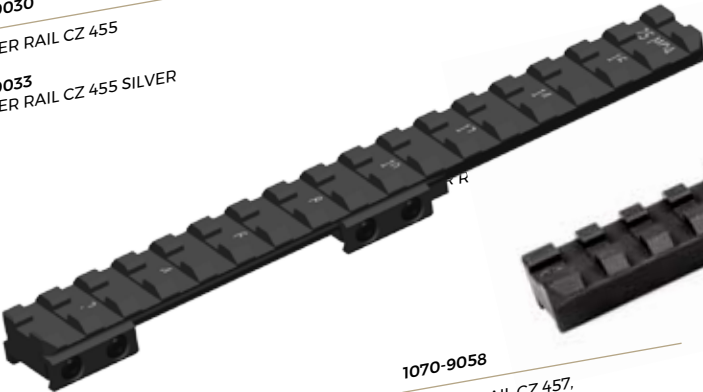
1070-9030  
WEAVER RAIL CZ 455  
1070-9033  
WEAVER RAIL CZ 455 SILVER



1070-9031  
WEAVER RAIL CZ 455 25MOA



1070-9040  
WEAVER RAIL CZ 527



1070-9058  
WEAVER RAIL CZ 457,  
ANGLED 25MOA



1080-7010  
WEAVER RAILA CZ 557  
LONG ACTION



1070-9057  
WEAVER RAIL CZ 457



1070-9020  
WEAVER RAIL BRNO COMBO/  
EXPRESS







5500-2990-01ND  
TRIGATTI SWIVEL



1081-7383  
SLING SWIVEL TRIGATTI



465557012001  
THREAD CAP M14x1

5080-0060-90ND  
THREAD CAP VARMIN  
1/2x20 UNF

5080-0060-80ND  
THREAD CAP 1/2X20 UNF



5812-1293-04ND  
SWIVEL CZ 455/CZ 457

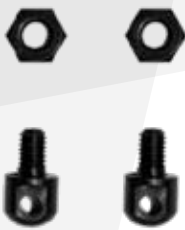


465570172001  
COMPENSATOR M14x1

46557007011  
COMPENSATOR FOR THREAD PH.  
THIN BARREL

46557007019  
COMPENSATOR FOR THREAD STILL.  
THIN BARREL

46557007021  
COMPENSATOR FOR THREAD PH.  
VARMIN BARREL



1002-4100-04  
CZ 512 ATI LOOP HOLDER



1002-4100-05  
ATI SLING LOOP



5120-0330-01  
RUBBER RIFLE BOLT KNOP COVER



1002-4100-07  
BUTTPLATE TACTILITE SCORPION X2  
RECOIL PAD UPGRADE KIT



1002-4100-08  
BUTTPLATE TACTILITE SCORPION  
RAZORBACK RECOIL PAD UPGRADE  
KIT



1002-4100-06  
TACTLITE SET HEIGHT ADJUSTABLE  
CHEEKPIECE



5120-0200  
CZ RIFLE TOOL



5073-0090-05ND  
MINISET CZ 455 AMERICAN  
22 LR

5073-0090-8805ND  
MINISET CZ 455 AMERICAN  
22 WMR

5073-0090-8905ND  
MINISET CZ 455 AMERICAN  
17 HMR



5073-0090-01ND  
MINISET CZ 455 LUX 22 LR

5073-0090-8801ND  
MINISET CZ 455 LUX 22 WMR

5073-0090-8901ND  
MINISET CZ 455 LUX 17 HMR

5073-0090-02ND  
MINISET CZ 455 LUX II 22 LR

5073-0090-8802ND  
MINISET CZ 455 LUX II 17 HMR

5073-0090-8902ND  
MINISET CZ 455 LUX II 22 WMR



3190-0001  
DIOPTER SCOPE (SET)



1022-1000-4403ND  
CZ 200 PRESSURE CYLINDER 122 CM³



1022-1000-4407ND  
CZ 200 PRESSURE CYLINDER 155 CM³



1020-0630-4401ND  
AIR PUMP ADAPTER FOR CZ 200



5073-0090-21ND  
MINISET CZ 455 VARMIN 22 LR

5073-0090-8821ND  
MINISET CZ 455 VARMIN 22 WMR

5073-0090-8921ND  
MINISET CZ 455 VARMIN 17 HMR



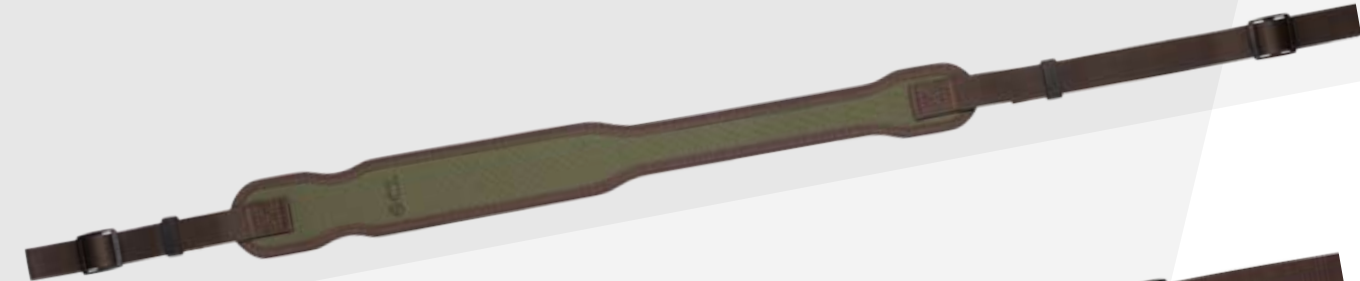
1093-0100  
SHOOTING CHRONOGRAPH  
FOR AIR GUNS



1093-0010  
AIR PUMP (AIR GUN ACC.)

1093-0011  
AIR PUMP WITH DRY-PAC SYSTEM





5120-0110-01  
CZ WEAPON SLING NYLON  
/RUBBER - GREEN



5120-0110-02  
CZ WEAPON SLING NYLON  
/RUBBER - BROWN



5120-0110-03  
CZ WEAPON SLING NYLON  
/RUBBER - ORANGE



5120-0110-04  
CZ WEAPON SLING TWEED  
/RUBBER - TWEED



5120-0110-11  
CZ WEAPON SLING LEATHER  
/RUBBER - LIGHT



5120-0110-12  
CZ WEAPON SLING LEATHER  
/RUBBER - DARK



5120-0110-09  
CZ WEAPON SLING NYLON  
/RUBBER - BLACK



5120-0110-05  
CZ WEAPON SLING TWEED  
/RUBBER - CAMO



5120-0100  
CZ RIFLE CASE, 118 CM - BLACK



5120-0101  
CZ RIFLE CASE, 118 CM - GREEN



5120-0220-01  
SILENCER WITH THREAD M14×1  
FOR CAL. 6,5-7,62 MM



5120-0210-01  
SILENCER WITH THREAD PH  
FOR CAL. .17 HMR; .22 WMR; .22 L

5120-0220-02  
SILENCER WITH THREAD M18×1  
FOR CAL. 6,5-7,62 MM

5120-0210-04  
SILENCER WITH THREAD M14×1  
FOR CAL. .17 HORNET .223 REM.

5120-0210-05  
SILENCER WITH THREAD M15×1  
FOR CAL. .17 HORNET .223 REM.

5120-0210-02  
SILENCER WITH THREAD STELL  
FOR CAL. .17 HMR; .22 WMR; .22 L

5120-0210-03  
SILENCER WITH THREAD 1/2"×28 UNF  
FOR CAL. .17 HMR; .22 WMR; .22 L



**0721-0700-03ND**  
STEEL TRITIUM SIGHT SET  
V.2 (5,50 MM)

**0721-0700-02ND**  
STEEL TRITIUM SIGHT SET  
V.2 (5,50 MM)

**0721-0700-04ND**  
STEEL TRITIUM SIGHT SET  
V.4 (6,00 MM)

**0561-0700-02**  
SIGHT P-10 TRIT 5,5 MM SET2

**0561-0700-03**  
SIGHT P-10 TRIT 5,75 MM SET3

**1091-1250-01**  
FRONT SIGHT WITH DOT V1 5,25 MM

**1091-1250-02**  
FRONT SIGHT WITH DOT V2 5,50 MM

**1091-1250-03**  
FRONT SIGHT WITH DOT V2 5,75 MM

**1091-1250-04**  
FRONT SIGHT WITH DOT V2 6,00 MM

**1091-1250-05**  
FRONT SIGHT WITH DOT V2 6,25 MM

**1091-1250-06**  
FRONT SIGHT WITH DOT V2 6,50 MM

**1091-1250-07**  
FRONT SIGHT WITH DOT V2 6,75 MM

**1091-1250-08**  
FRONT SIGHT WITH DOT V2 7,00 MM

**1091-1250-09**  
FRONT SIGHT WITH DOT V2 7,50 MM

**1091-1250-10**  
FRONT SIGHT WITH DOT V2 8,00 MM

**1091-1250-11**  
FRONT SIGHT WITH DOT V2 8,50 MM

**1091-1251-01**  
FRONT SIGHT WITHOUT DOT V1 5,25 MM

**1091-1251-02**  
FRONT SIGHT WITHOUT DOT V2 5,50 MM

**1091-1251-03**  
FRONT SIGHT WITHOUT DOT V2 5,75 MM

**1091-1251-04**  
FRONT SIGHT WITHOUT DOT V2 6,00 MM

**1091-1251-05**  
FRONT SIGHT WITHOUT DOT V2 6,25 MM

**1091-1251-06**  
FRONT SIGHT WITHOUT DOT V2 6,50 MM

**1091-1251-07**  
FRONT SIGHT WITHOUT DOT V2 6,75 MM

**1091-1251-08**  
FRONT SIGHT WITHOUT DOT V2 7,00 MM

**1091-1251-09**  
FRONT SIGHT WITHOUT DOT V2 7,50 MM

**1091-1251-10**  
FRONT SIGHT WITHOUT DOT V2 8,00 MM

**1091-1251-11**  
FRONT SIGHT WITHOUT DOT V2 8,50 MM

**1091-1252-01**  
FIBRE OPTIC SIGHT V1 1×5,25 MM

**1091-1252-02**  
FIBRE OPTIC SIGHT V2 1×5,50 MM

**1091-1252-03**  
FIBRE OPTIC SIGHT V2 1×5,75 MM

**1091-1252-04**  
FIBRE OPTIC SIGHT V2 1×6,00 MM

**1091-1252-05**  
FIBRE OPTIC SIGHT V2 1×6,25 MM

**1091-1252-06**  
FIBRE OPTIC SIGHT V2 1×6,50 MM

**1091-1252-07**  
FIBRE OPTIC SIGHT V2 1×6,75 MM

**1091-1252-08**  
FIBRE OPTIC SIGHT V2 1×7,00 MM

**1091-1252-09**  
FIBRE OPTIC SIGHT V2 1×7,50 MM

**1091-1252-10**  
FIBRE OPTIC SIGHT V2 1×8,00 MM

**1091-1252-11**  
FIBRE OPTIC SIGHT V2 1×8,50 MM

**1091-1253-01**  
FIBRE OPTIC SIGHT V1 1,5×5,25 MM

**1091-1253-02**  
FIBRE OPTIC SIGHT V2 1,5×5,50 MM

**1091-1253-03**  
FIBRE OPTIC SIGHT V2 1,5×5,75 MM

**1091-1253-04**  
FIBRE OPTIC SIGHT V2 1,5×6,00 MM

**1091-1253-05**  
FIBRE OPTIC SIGHT V2 1,5×6,25 MM

**1091-1253-06**  
FIBRE OPTIC SIGHT V2 1,5×6,50 MM

**1091-1253-07**  
FIBRE OPTIC SIGHT V2 1,5×6,75 MM

**1091-1253-08**  
FIBRE OPTIC SIGHT V2 1,5×7,00 MM

**1091-1253-09**  
FIBRE OPTIC SIGHT V2 1,5×7,50 MM

**1091-1253-10**  
FIBRE OPTIC SIGHT V2 1,5×8,00 MM

**1091-1253-11**  
FIBRE OPTIC SIGHT V2 1,5×8,50 MM

**1081-0101**  
ADJUSTABLE REAR SIGHT FOR  
SHADOW 2/SP-01 SHADOW

**1091-1260**  
DEFENDER REAR SIGHT  
WITH DOT 7,3 MM

**1091-1263**  
DEFENDER REAR SIGHT  
WITH DOT 8,3 MM

**1091-1262**  
DEFENDER REAR SIGHT  
WITH DOT 10 MM

**1091-1269**  
TARGET REAR SIGHT  
WITHOUT DOT 7,3 MM

**1091-1270**  
TARGET REAR SIGHT  
WITHOUT DOT 8,3 MM

**1091-1271**  
TARGET REAR SIGHT  
WITHOUT DOT 10 MM

**1081-0105**  
ADJUSTABLE REAR SIGHT FOR  
TS ORANGE

**1091-1263**  
DEFENDER REAR SIGHT  
WITHOUT DOT 7,3 MM

**1091-1264**  
DEFENDER REAR SIGHT  
WITHOUT DOT 8,3 MM

**1091-1265**  
DEFENDER REAR SIGHT  
WITHOUT DOT 10 MM

**1091-1272**  
FIBRE OPTIC REAR SIGHT 7,3 MM

**1091-1273**  
FIBRE OPTIC REAR SIGHT 8,3 MM

**1091-1274**  
FIBRE OPTIC REAR SIGHT 10 MM

**1091-1266**  
TARGET REAR SIGHT  
WITH DOT 7,3 MM

**1091-1267**  
TARGET REAR SIGHT  
WITH DOT 8,3 MM

**1091-1268**  
TARGET REAR SIGHT  
WITH DOT 10 MM

HEIGHT OF FRONT SIGHT	FRONT SIGHT WITH DOT *	FRONT SIGHT WITHOUT DOT *	FIBRE OPTIC SIGHT 1 MM **	FIBRE OPTIC SIGHT 1.5 MM **
5.25 mm	<b>1091-1250-01</b>	<b>1091-1251-01</b>	<b>1091-1252-01</b>	<b>1091-1253-01</b>
5.5 mm	<b>1091-1250-02</b>	<b>1091-1251-02</b>	<b>1091-1252-02</b>	<b>1091-1253-02</b>
5.75 mm	<b>1091-1250-03</b>	<b>1091-1251-03</b>	<b>1091-1252-03</b>	<b>1091-1253-03</b>
6 mm	<b>1091-1250-04</b>	<b>1091-1251-04</b>	<b>1091-1252-04</b>	<b>1091-1253-04</b>
6.25 mm	<b>1091-1250-05</b>	<b>1091-1251-05</b>	<b>1091-1252-05</b>	<b>1091-1253-05</b>
6.5 mm	<b>1091-1250-06</b>	<b>1091-1251-06</b>	<b>1091-1252-06</b>	<b>1091-1253-06</b>
6.75 mm	<b>1091-1250-07</b>	<b>1091-1251-07</b>	<b>1091-1252-07</b>	<b>1091-1253-07</b>
7 mm	<b>1091-1250-08</b>	<b>1091-1251-08</b>	<b>1091-1252-08</b>	<b>1091-1253-08</b>
7.5 mm	<b>1091-1250-09</b>	<b>1091-1251-09</b>	<b>1091-1252-09</b>	<b>1091-1253-09</b>
8 mm	<b>1091-1250-10</b>	<b>1091-1251-10</b>	<b>1091-1252-10</b>	<b>1091-1253-10</b>
8.5 mm	<b>1091-1250-11</b>	<b>1091-1251-11</b>	<b>1091-1252-11</b>	<b>1091-1253-11</b>

\* CZ P-07, CZ P-09,  
CZ 75 COMPACT,  
CZ 75 D COMPACT, CZ 75,  
CZ 75 B Q, CZ 85, CZ 97,  
CZ SP-01,  
CZ 75 SP-01 TACTICAL,  
CZ 75 SP-01 SHADOW,  
CZ 75 SP-01 PHANTOM,  
CZ 75 TS, CZ 75 TS CZECHMATE

\*\* CZ 75 COMPACT,  
CZ 75 D COMPACT, CZ 75,  
CZ 75 B Q, CZ 85, CZ 97,  
CZ SP-01,  
CZ 75 SP-01 TACTICAL,  
CZ 75 SP-01 SHADOW,  
CZ 75 SP-01 PHANTOM,  
CZ 75 TS, CZ 75 TS CZECHMATE

	HEIGHT OF REAR SIGHT	DEFENDER REAR SIGHT WITH DOT	DEFENDER REAR SIGHT WITHOUT DOT	TARGET REAR SIGHT WITH DOT	TARGET REAR SIGHT WITHOUT DOT	FIBRE OPTIC REAR SIGHT
CZ P-07 / CZ P-09	7,3 mm	<b>1091-1260</b>	<b>1091-1263</b>	<b>1091-1266</b>	<b>1091-1269</b>	<b>1091-1272</b>
CZ 75/85/SP-01	8,3 mm	<b>1091-1261</b>	<b>1091-1264</b>	<b>1091-1267</b>	<b>1091-1270</b>	<b>1091-1273</b>
CZ 75 SP-01 SHADOW	10 mm	<b>1091-1262</b>	<b>1091-1265</b>	<b>1091-1268</b>	<b>1091-1271</b>	<b>1091-1274</b>

	HEIGHT OF SIGHTS	FIBRE OPTIC SIGHTS 1 M	FIBRE OPTIC SIGHTS 1.5 M	TRITIUM SIGHTS
CZ P-07 / CZ P-09	5,5 mm	<b>1091-1282-02</b>	<b>1091-1283-02</b>	<b>0721-0700-02ND</b>
CZ P-07 / CZ P-09	5,75 mm	<b>1091-1282-03</b>	<b>1091-1283-03</b>	<b>0721-0700-03ND</b>
CZ P-07 / CZ P-09	6 mm	<b>1091-1282-04</b>	<b>1091-1283-04</b>	<b>0721-0700-04ND</b>



1010-1309  
MAGAZINE CZ P-07 KADET



1010-1310  
MAGAZINE CZ P-09 KADET



1010-1313  
MAGAZINE CZ SP-01/SHADOW 2 KADET



0422-0710-16ND  
MAGAZINE 19 ROUND CZ 75/SP-01/SHADOW 2, NICKEL



0422-0710-14ND  
MAGAZINE 17 ROUND CZ SP-01/SHADOW 2, NICKEL



0422-0710-15ND  
MAGAZINE 19 ROUND CZ SP-01/SHADOW 2, AFC



0422-0710-11ND  
MAGAZINE 17 ROUND CZ SP-01/SHADOW 2, AFC



0552-0030-06ND  
MAGAZINE P-10 C 9x19 17 ROUND



0552-0030-10ND  
MAGAZINE P-10 C 9x19 15 ROUND



0422-0710-07ND  
MAGAZINE CZ 75/85 16/9x19/9x21



0722-0030-10ND  
MAGAZINE P-09/10F 9x19 19 ROUND



0472-3710-0706ND  
MAGAZINE CZ TS 20/9x19



0472-3710-1617ND  
MAGAZINE CZ TS 17/40 S&W



5125-1040  
KYDEX HOLSTER P-09 (R)

5125-1041  
KYDEX HOLSTER P-09 (L)

5125-1042  
KYDEX HOLSTER P-07 (R)

5125-1043  
KYDEX HOLSTER P-07 (L)

5125-1044  
KYDEX HOLSTER CZ 75 D COMPACT (R)

5125-1045  
KYDEX HOLSTER CZ 75 D COMPACT (L)

5125-1063  
KYDEX HOLSTER CZ 2075 RAMI

5125-1099  
KYDEX HOLSTER CZ-10 C (R)

5125-1098  
KYDEX HOLSTER CZ-10 C (L)

5125-1060  
KYDEX HOLSTER CZ 75 (R)

5125-1062  
KYDEX HOLSTER SP-01 (R)



5125-1096  
KYDEX HOLSTER CZ P-10 (L) + INFORCE APL

5125-1097  
KYDEX HOLSTER CZ P-10 (R) + INFORCE APL

5125-1094  
KYDEX HOLSTER CZ P-10 (L) + INFORCE APLC

5125-1095  
KYDEX HOLSTER CZ P-10 (R) + INFORCE APLC

5125-1190-02  
KYDEX HOLSTER CZ P-10 F (L) CS

5125-1190-01  
KYDEX HOLSTER CZ P-10 F (R) CS



5125-1046  
MAGAZINE POUCH P-07/P-09/P-10

5125-1048  
MAGAZINE POUCH CZ 75



5125-1047  
MAGAZINE POUCH P-07/P-09/P-10 DOUBLE

5125-1049  
MAGAZINE POUCH CZ 75 DOUBLE



3660-0020  
WEAPON LIGHT INFORCE APL



3660-0021  
WEAPON LIGHT INFORCE APL FDE



3660-0022  
WEAPON LIGHT INFORCE APLC



1091-1345-11  
ALUMINIUM MAGAZINE BASEPLATE  
FOR USE WITH FUNNEL CZ SHADOW 2  
BLACK



1091-1345-14  
ALUMINIUM MAGAZINE BASEPLATE  
FOR USE WITH FUNNEL CZ SHADOW 2  
BLUE



1091-1340-03  
ALUMINIUM MAGAZINE BASEPLATE  
CZ 75 RED



1091-1341-02  
ALUMINIUM MAGAZINE BASEPLATE  
SP-01 SILVER



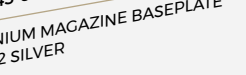
1091-1360  
ALUMINIUM MAGAZINE BASEPLATE  
CZ P-10 ENLARGED



1091-1342-03  
ALUMINIUM MAGAZINE BASEPLATE  
TS RED



1091-1343-02  
ALUMINIUM MAGAZINE BASEPLATE  
CZ 75 +2 SILVER



1091-1345-12  
ALUMINIUM MAGAZINE BASEPLATE  
FOR USE WITH FUNNEL CZ SHADOW 2  
SILVER



1091-1340-01  
ALUMINIUM MAGAZINE BASEPLATE  
CZ 75 BLACK



1091-1340-04  
ALUMINIUM MAGAZINE BASEPLATE  
CZ 75 BLUE



1091-1341-03  
ALUMINIUM MAGAZINE BASEPLATE  
SP-01 RED



1091-1342-01  
ALUMINIUM MAGAZINE BASEPLATE  
TS BLACK



1091-1342-04  
ALUMINIUM MAGAZINE BASEPLATE  
TS BLUE



1091-1343-03  
ALUMINIUM MAGAZINE BASEPLATE  
CZ 75 +2 RED



1091-1345-05  
ALUMINIUM MAGAZINE BASEPLATE  
FOR USE WITH FUNNEL CZ SHADOW 2  
PURPLE



1091-1340-02  
ALUMINIUM MAGAZINE BASEPLATE  
CZ 75 SILVER



1091-1341-01  
ALUMINIUM MAGAZINE BASEPLATE  
SP-01 BLACK



1091-1341-04  
ALUMINIUM MAGAZINE BASEPLATE  
SP-01 BLUE



1091-1342-02  
ALUMINIUM MAGAZINE BASEPLATE  
TS SILVER



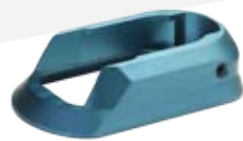
1091-1343-01  
ALUMINIUM MAGAZINE BASEPLATE  
CZ 75 +2 BLACK



1091-1343-04  
ALUMINIUM MAGAZINE BASEPLATE  
CZ 75 +2 BLUE



1091-2280-14  
MAGAZINE FUNNEL CZ SHADOW 2  
BLUE



1091-2280-01  
MAGAZINE FUNNEL CZ SHADOW 2  
BLACK



0640-0080-02ND  
FLAT SLIDE STOP (ND) SHADOW 2/TS



1091-2180-11  
GRIP PANELS CZ SHADOW 2 BLACK  
(HARD ELOX)



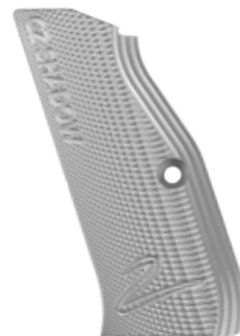
1091-2180-21  
GRIP PANELS CZ SHADOW 2 SHORT  
BLACK (HARD ELOX)



1091-1320  
HAMMER SA/DA



0423-2500-02ND  
EXTENDED SAFETY SHADOW 2 (R)



1091-2180-12  
GRIP PANELS CZ SHADOW 2 SILVER  
(HARD ELOX)



1091-2180-22  
GRIP PANELS CZ SHADOW 2 SHORT  
SILVER (HARD ELOX)



1091-1321  
HAMMER SA



1091-2180-14  
GRIP PANELS CZ SHADOW 2 BLUE  
(HARD ELOX)



1091-2180-24  
GRIP PANELS CZ SHADOW 2 SHORT  
BLUE (HARD ELOX)



1091-2280-05  
MAGAZINE FUNNEL CZ SHADOW 2  
PURPLE



1091-1224  
AMBIDEXTROUS FLAT SAFETY  
CZ SHADOW 2



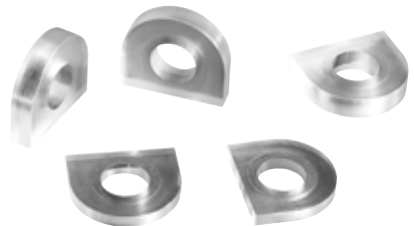
1091-2180-05  
GRIP PANELS CZ SHADOW 2 PURPLE



1091-2180-25  
GRIP PANELS CZ SHADOW 2 SHORT  
PURPLE



1091-1246  
BUFFER SET (WIDE x3, NARROW x2)





**A0101-0010**  
COLLIMATOR TRIJICON MRO  
(39 MM, ŠROUB)



**A0103-0001**  
TACTICAL TORCH INFORCE WML  
400 LM



**A0107-0001**  
SILENCER B&T 9 MM PRO CZ EVO 3



**A0201-0001**  
COLLIMATOR AIMPOINT COMPM4,  
MOM. ŠROUB



**A0201-0004**  
MAGNIFYING MODULE AIMPOINT  
3XMAG



**A0203-0001**  
TACTICAL TORCH INFORCE WMLX,  
800 LM



**3662-0800-0713 ND**  
TRANSPARENT MAGAZINE  
FOR CZ EVO 3, 10 ROUND



**3662-0770-0723 ND**  
TRANSPARENT MAGAZINE  
FOR CZ EVO 3, 20 ROUND



**3662-0780-0733 ND**  
TRANSPARENT MAGAZINE  
FOR CZ EVO 3, 30 ROUND



**3662-0780-0735 ND**  
MAGAZINE CZ MAG 9MM, 30 ROUND



**3722-3500-6501 ND**  
MAGAZINE CZ MAG 5,56×45,  
30 ROUND



**3722-3500-7301 ND**  
MAGAZINE CZ MAG 7,62×39, 30 ROUND



**545900004040**  
QD POUCH FOR SLING



**D2800-0600**  
1/2 POINT ASSAULT RIFLE SLING, FDE



**A0105-0001**  
FRONT SUPPORT FOR CZ EVO 3



**D3660-0080**  
SINGLE MAGAZINE POUCH  
30 CZ EVO, BLACK



**D3660-0081**  
DOUBLE MAGAZINE POUCH  
30 CZ EVO, BLACK



**D3800-0600**  
TACTICAL BAG FOR EVO SUBMACHINE  
GUN, FDE



**D3900-0300**  
TACTICAL BAG FOR BREN ASSAULT  
RIFLE, BLACK

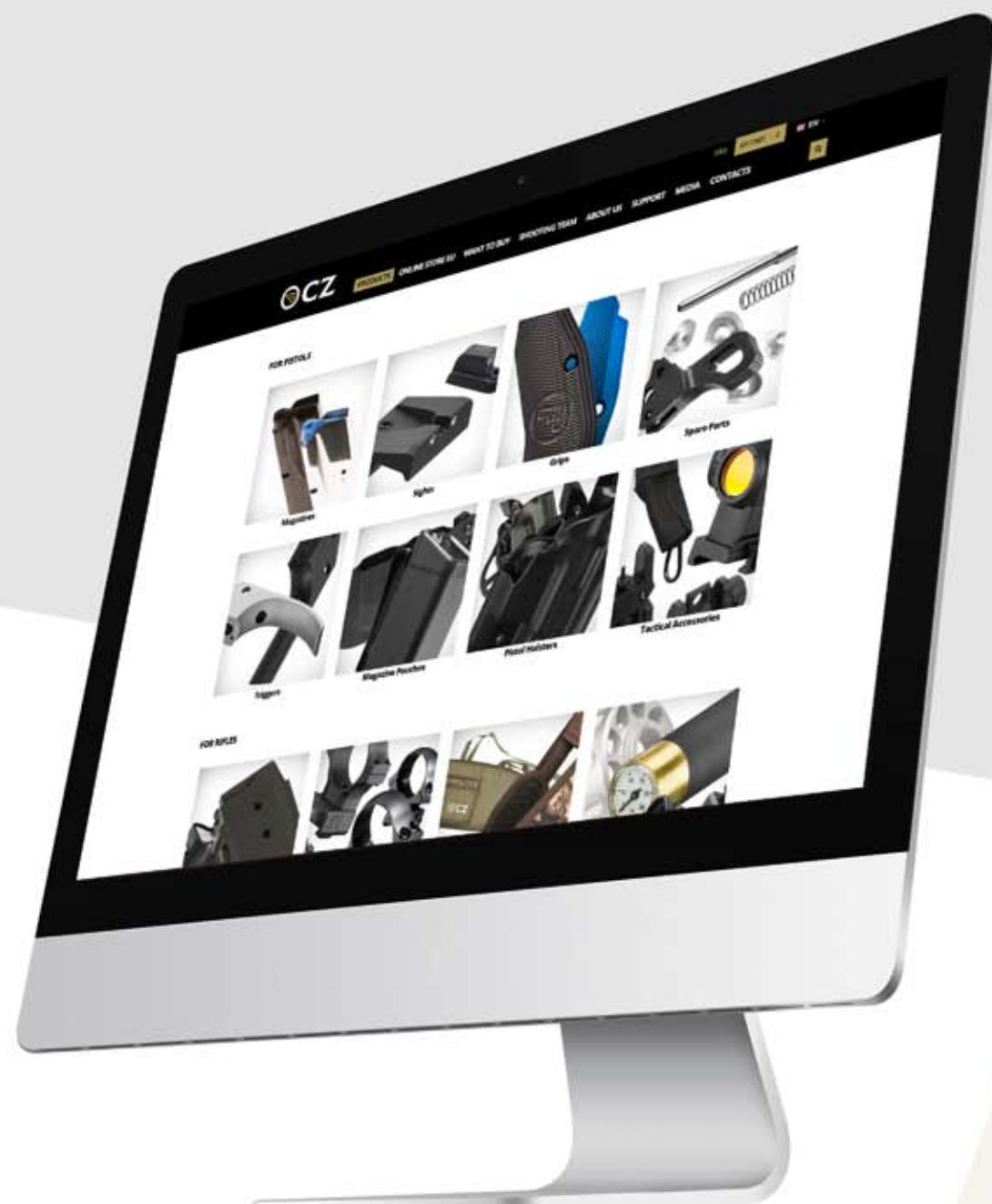


**D2800-0300**  
1/2 POINT ASSAULT RIFLE SLING, BLACK



**D3900-0600**  
TACTICAL BAG FOR BREN ASSAULT  
RIFLE, FDE





Find more  
on **our e-shop**  
**shop.czub.cz**

*Stay in touch  
with us!*

 CZfirearmsOfficial

 CZfirearms

 #CZguns

info@czub.cz

czub.cz





 CZfirearmsOfficial

 CZfirearms

 #CZguns info@czub.cz

| czub.cz